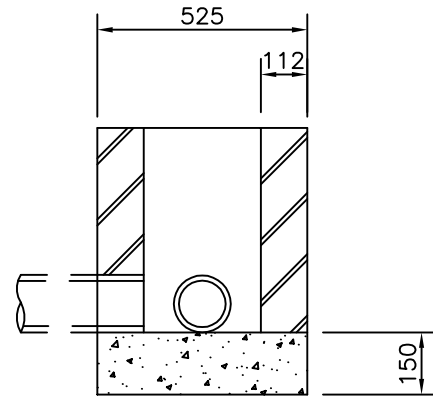
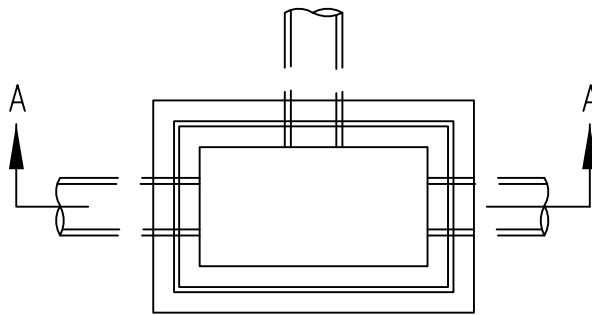


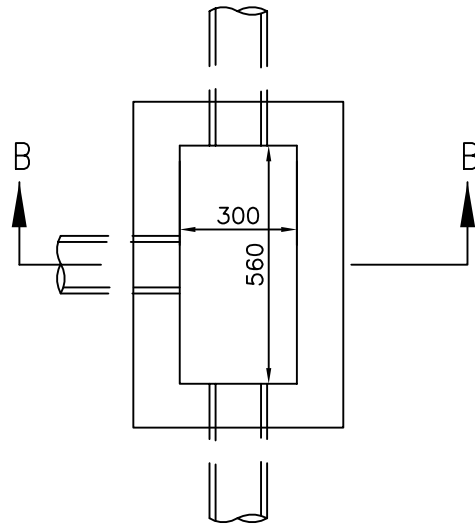
SECTIONAL ELEVATION A-A



SECTIONAL ELEVATION B-B



PLAN



PLAN

NOTES

ALL DIMENSIONS IN MILLIMETRES.

CHAMBER BASE TO BE CAST INSITU  
IN MIX ST4 CONCRETE WITH  
A SMOOTH FINISH, TO CLASS U3.

WALLS TO BE CLASS B ENGINEERING  
BRICK, TO BS EN 771-1:2011, 112mm THICK.

ALL MORTAR TO BE CLASS I.

DUCTS TO BE BUILT INTO THE  
CHAMBER WALLS.


DUCT LAYOUT AND DEPTHS MAY  
VARY FROM THAT SHOWN.

FOR ALL PIPES, THE NEAREST JOINT  
SHALL FORM PART OF AN ARTICULATED  
SECTION AND BE NOT MORE THAN 500mm  
FROM THE INNER FACE OF THE WALL.

CHAMBER COVER AND FRAME SHALL BE  
AN "ELECTRIC BOX NO.2" MANUFACTURED  
BY A. S. MACINTYRE & CO. LTD.,  
15 MUIRHALL ROAD, LARBERT, FK5 4RF.  
AND WITH THE PROVISION OF A  
GRANOLITHIC CONCRETE INFILL.

AN ALTERNATIVE DESIGN OF CLASS A15  
CHAMBER COVER MAY BE USED WITH  
THE ENGINEERS APPROVAL.

THIS CHAMBER IS TO BE USED  
ONLY IN FOOTPATHS, TRAFFIC ISLANDS  
OR PEDESTRIAN REFUGES. IT IS NOT  
TO BE USED IN SITUATIONS ACCESSIBLE  
TO VEHICULAR LOADINGS.

East Lothian Council Road Services John Muir House Haddington East Lothian EH41 3HA	 <b>East Lothian</b> Council
STREET LIGHTING DUCT ACCESS CHAMBER 560 x 300mm	
Date: NOV 2013 Scale: NTS	Drawn by: Checked by:
DRG. NO. 5455	