

Haddington Area Early Years Profile



Introduction

Support from the Start is a network of people and organisations who are working for the 'Best Possible Start for All Children in East Lothian. The network uses local knowledge and the information in this profile to work towards the following outcomes for children:-

- Have positive parenting & experience good attachments at an early stage
- Are ready to learn and achieve
- Can access quality child care experiences
- Are healthy & happy
- Are not living in poverty
- Have a good opportunity for play
- Are protected from harm

The Haddington Area Support from the Start group was launched in September 2012. Its 'core group' has met on a regular basis since then led by Ginnie Moreton a retired NHS Health Promotion team manager.

The groups key achievement so far include :-

- Supporting local play resources to develop their work
- Supporting development of PEEP & Baby Massage in the area
- Began to improve links between early years agencies and practitioners

Haddington Area Overview

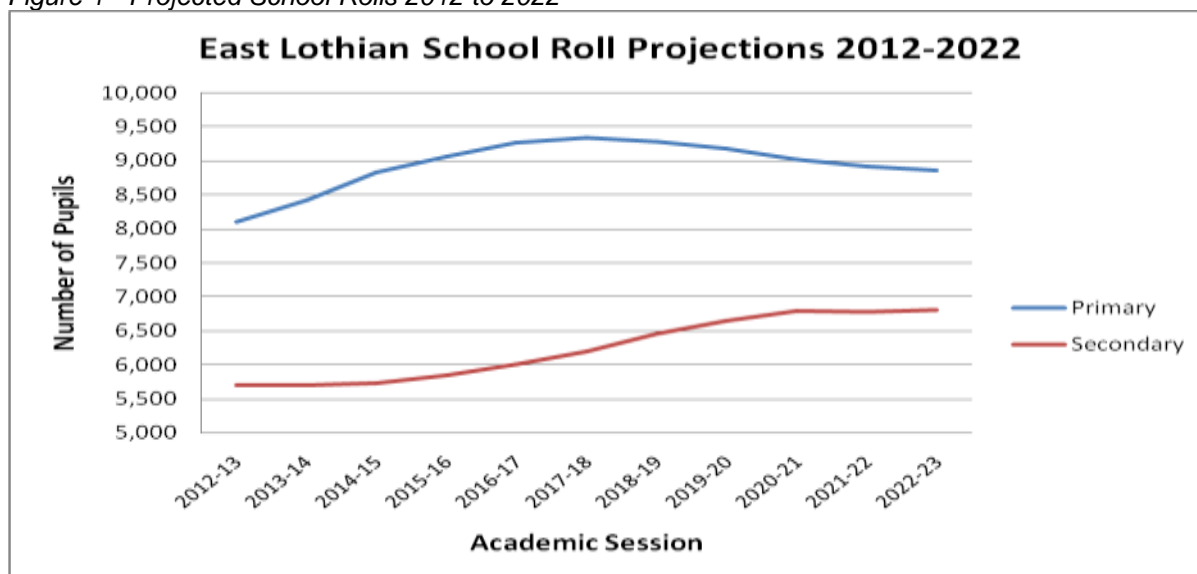
Lying in the middle of the county Haddington and its surrounding communities stretch from Athelstaneford in the North, to Humbie and Saltoun in the East and Garvald in the west. Haddington is the county seat and administrative capital of East Lothian.

Population

The entire area has a population of 12,932 which is some 13% of the population of East Lothian as a whole.¹ 66% of the area's population live in the town of Haddington. The remaining people are spread across smaller rural settlements. Of these small rural settlements 83% are classed by the Scottish Index of Multiple Deprivation (SIMD) as being within the 15% of the population most deprived in terms of geographic access. The area has one secondary school and four primary schools with attached nursery classes. In the Haddington area the population has grown by only 3% since 2001, notably lower than the East Lothian growth rate as a whole.

The school age population is expected to increase across East Lothian over the next decade (Fig. 1).

Figure 1 - Projected School Rolls 2012 to 2022²



The age distribution of Haddington is broadly similar to East Lothian (Table 1).

Table 1 - Population age composition³

	Haddington area	East Lothian	Scotland
% of population children & young people (0-15)	19%	19%	17%
% of population of working age (16-64)	59%	60%	63%
% of population of pensionable age (65+)	22%	21%	20%

Health

Health and deprivation varies considerably across the area. While most of Haddington is better than East Lothian as a whole, in relation to rates of smoking in pregnancy there are more women smoking in pregnancy in Haddington South than elsewhere in Haddington or East Lothian as a whole (Fig 2).

¹ ELC (2012) Haddington Community Profile

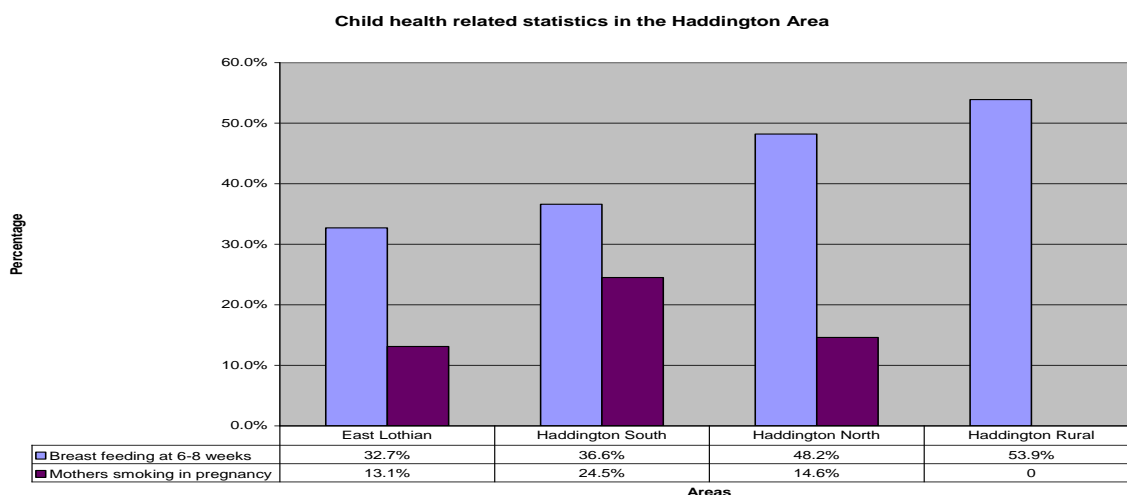
[http://www.eastlothiancommunityplanning.org.uk/files/local_community_planning/Haddington_Profile.pdf]

² East Lothian Council Education Department

³ ELC (2012) Haddington Community Profile

[http://www.eastlothiancommunityplanning.org.uk/files/local_community_planning/Haddington_Profile.pdf]

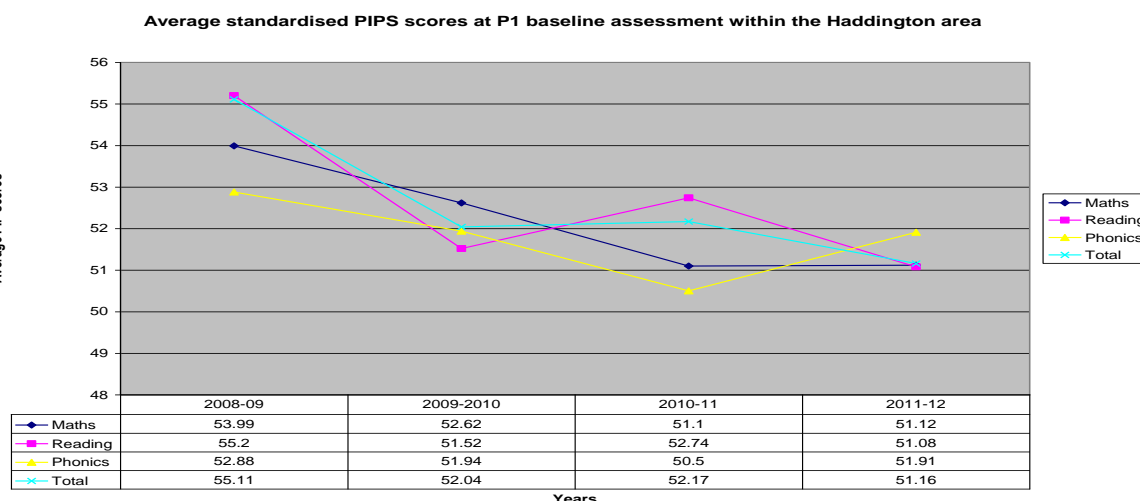
Figure 2 - Breastfeeding and maternal smoking in pregnancy ⁴



Education

In primary one the standard assessment used to measure the abilities of new pupils in reading, writing and arithmetic show a steady slight decline towards the national average of 50% in recent years (Fig. 3).

Figure 3 - Average standardised PIPS scores at P1 baseline assessment ⁵



Early Development Instrument ⁶

Across all socioeconomic status groups, East Lothian 5 yr olds do well in physical health and well-being and cognitive/language development domains; score average in social competency; and score less well in emotional maturity and communications and general knowledge domains.

Within the Haddington area the overall range of scores of children were very similar to East Lothian as a whole (Fig 5) and compared well with many other cluster areas (Appendix 1). Haddington had the third lowest percentage of children in East Lothian scoring low on at least one domain (Appendix 2). However there is an

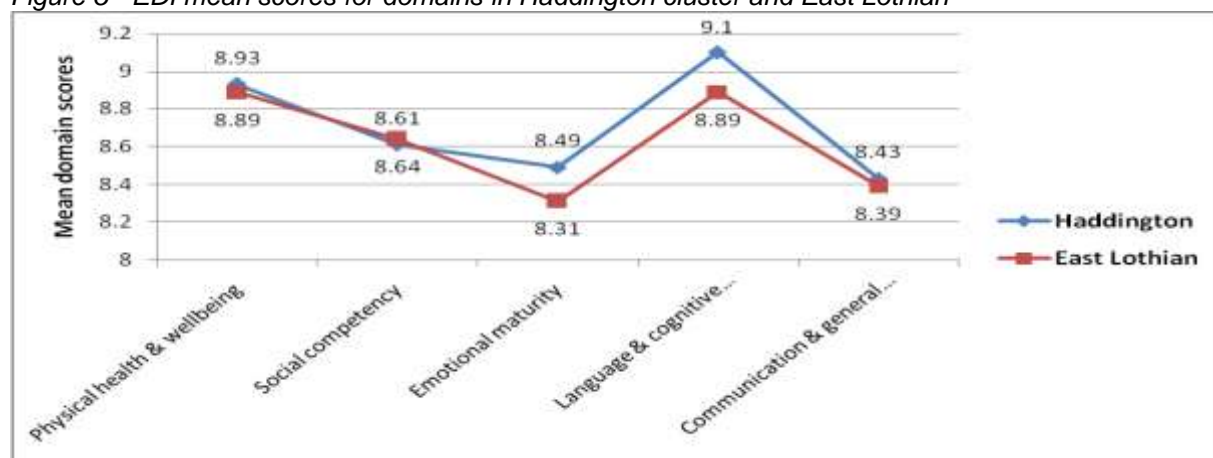
⁴ East Lothian Health & Wellbeing Profile 2010 ([Scottish Public Health Observatory](#))

⁵ East Lothian Council Education Department

⁶ Geddes, R (2012) Early Development Instrument report – East Lothian Pilot 2012. Scottish Collaboration for Public Health Research and Policy, Edinburgh

observable difference within Haddington itself and between the town and its surrounding areas in these scores (Appendix 2).

Figure 5 - EDI mean scores for domains in Haddington cluster and East Lothian



Children & Young People

Given its population the Haddington area has lower than expected levels of childhood disadvantage in every category listed below (Table 2).

Table 2 - Children and Young People Facts & Figures ⁷

	Haddington	East Lothian	%
Number of Pupils *	1,703	13,301	12.8
Looked After Pupils (at home) *	2	36	5.6
Looked After Pupils (away from home) *	6	125	4.8
Pupils with ASN *	254	2,368	10.7
Disabled Pupils *	13	197	6.6
Free School Meal Registration *	136	1,496	9.1
Children & Families Social Work Referrals (2010 - 2011) **	257	2631	9.8
Children on Child Protection Register (April 2011) **	2	55	3.6
Children under 5 in Foster Care (Nov 2011) **	1	18	5.5

* From Primary and Secondary School Pupil Census 2010

** From ELC Children & Families Social work Department

Haddington has more young people unemployed and seeking work upon leaving school than elsewhere across East Lothian or Scotland (Table 3).

Table 3 - Leaver destination and percentages 2010-2011⁸

	Knox Academy	East Lothian	Scotland
Higher education	42%	36%	36%
Further education	16%	23%	27%
Training	3%	6%	6%
Employment	19%	22%	20%
Unemployed, seeking employment	17%	12%	10%
Unemployed, not seeking employment	3%	2%	1%

⁷ East Lothian Council Education Department

⁸ Scottish Schools Online

<http://www.educationscotland.gov.uk/scottishschoolsonline/schools/leaverdestinations.asp?iSchoolID=5555930>

Amenities

Haddington has a range of services and resources available to its residents which are highlighted on the map in Appendix 3

There is also considerable wider amenity and green space available in and around Haddington (see Appendix 4). Green spaces are the lungs of towns and cities and can contribute greatly to improving people's physical and mental health by providing places for informal recreation - walking, cycling, sitting, socialising and children's play - and breathing spaces to take time out from the stresses of modern life. They bring the countryside into urban areas and make it more accessible. Green space is any vegetated land or water within or adjoining an urban area and includes:

- green corridors like paths, disused railway lines, rivers and canals
- woods, grassed areas, parks, gardens, playing fields, children's play areas, cemeteries and allotments
- countryside immediately adjoining a town which people can access from their homes
- derelict, vacant and contaminated land which has the potential to be transformed

Summary

Haddington covers the communities of Haddington and its surrounding communities of Athelstaneford, Humbie, Saltoun and Garvald. This short profile indicates that population health and wellbeing is generally good although there are localised areas of concern where health and other statistics are less positive and of more concern.

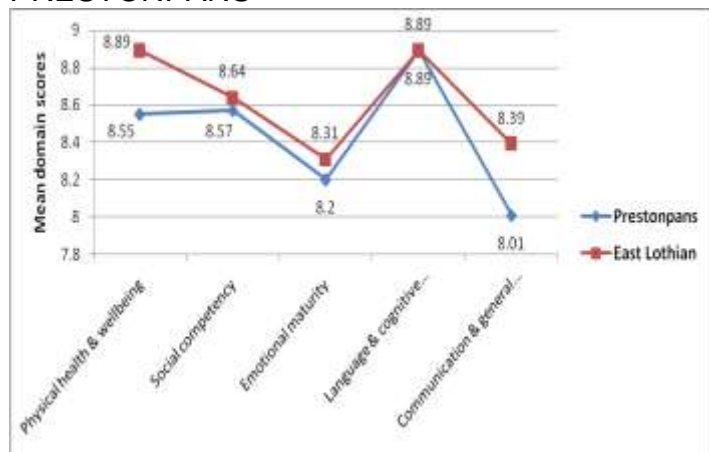
Haddington has a middle ranked percentage of children in East Lothian scoring low on at least one domain of the EDI. However there is an observable difference within Haddington itself and between the town and its surrounding areas in these scores.

Educationally young people in Haddington are well served although there remain challenges in making sure all children get the best out of education. There are particular issues of finding employment for young people locally on leaving school.

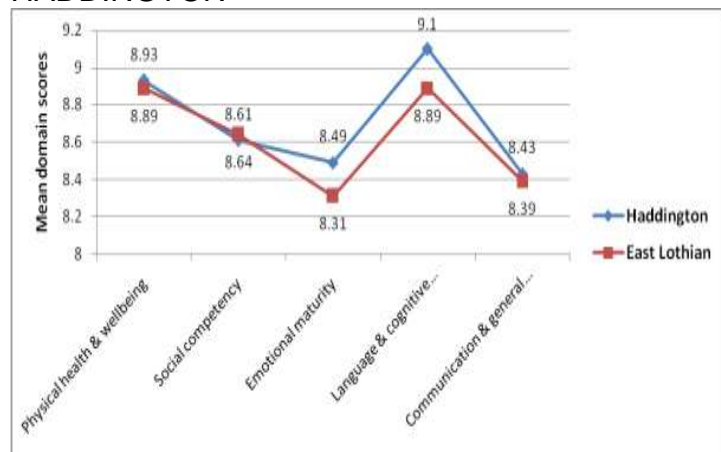
The area is generally quite well served for amenities and green space although there are access issues for some of communities in the area.

Appendix 1 - EDI mean scores for domains in cluster areas across East Lothian

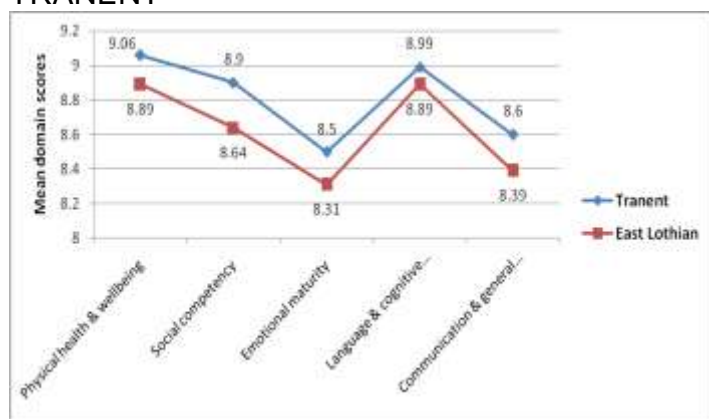
PRESTONPANS



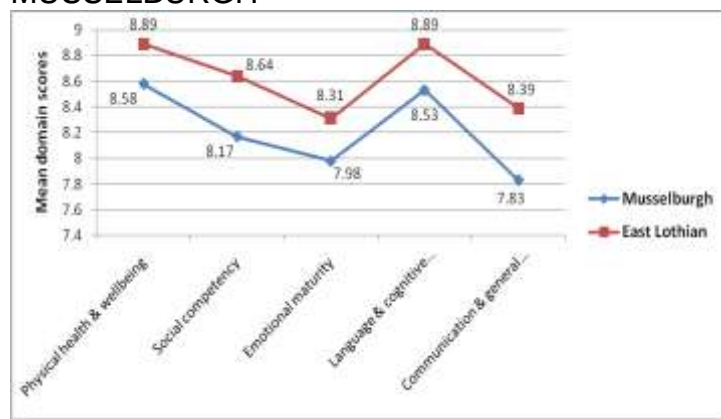
HADDINGTON



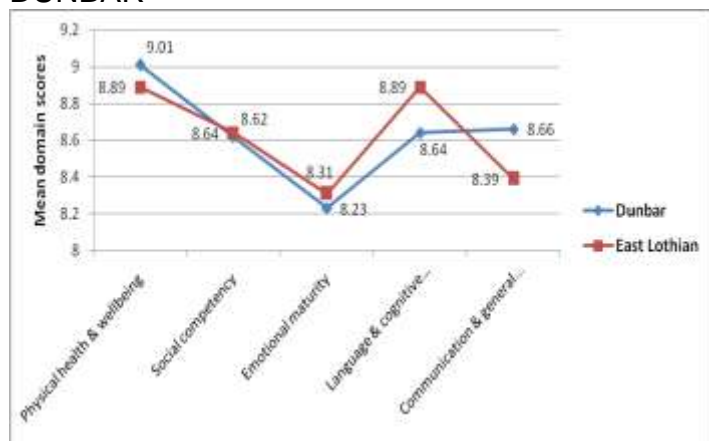
TRANENT



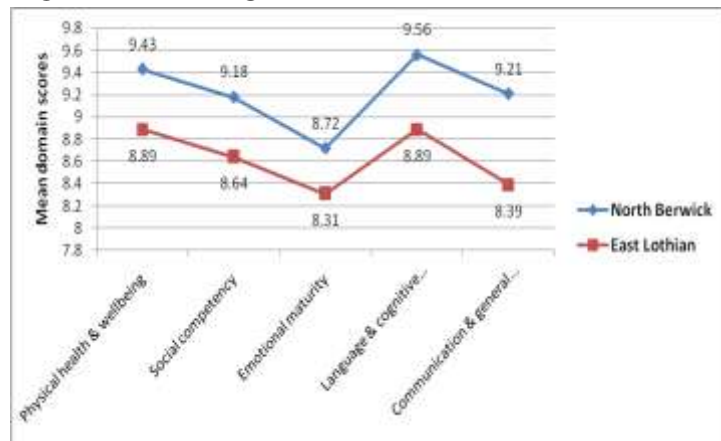
MUSSELBURGH



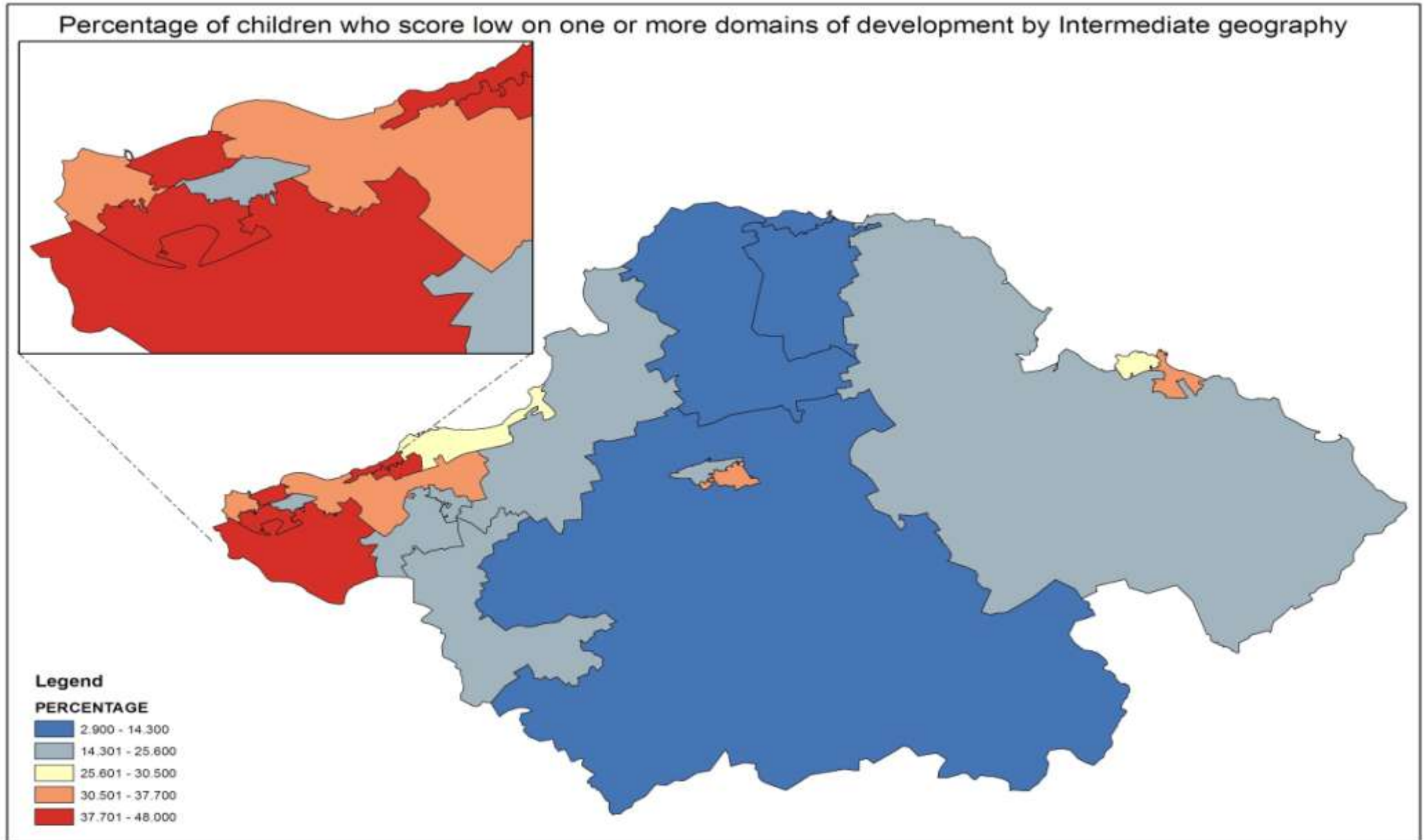
DUNBAR



NORTH BERWICK



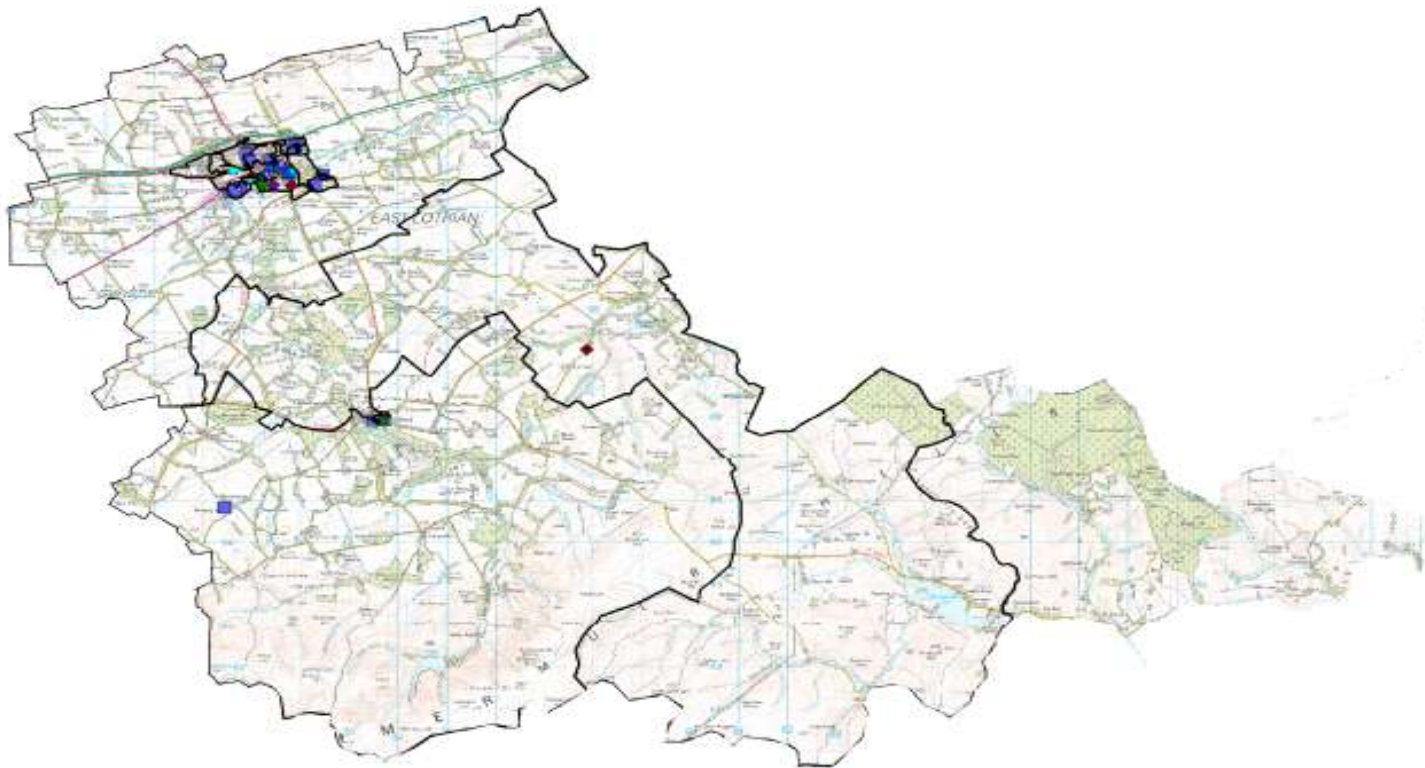
Appendix 2 – Percentage of children in East Lothian who score low on at least one domain by intermediate geography, January 2012



Appendix 3 – Amenities and service in the Haddington Area ⁹

⁹ All schools have access to educational psychology and school nursing services

Haddington Cluster

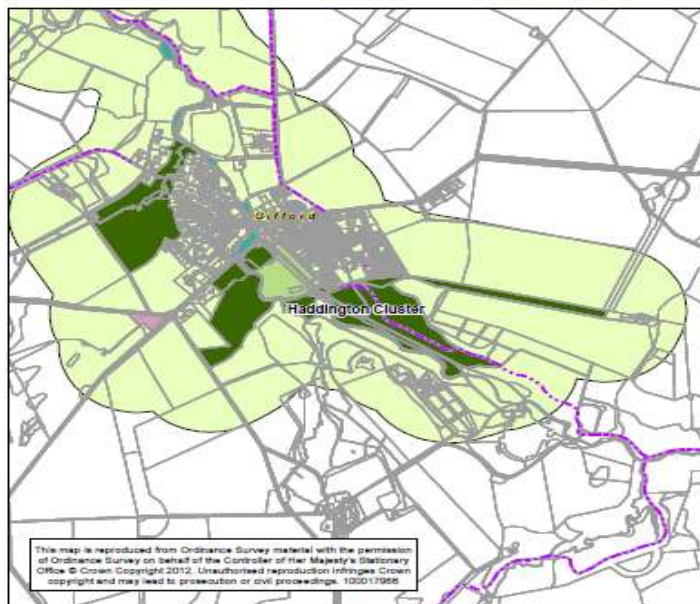


- ▲ Dentists
- ▲ GPs
- ▲ Pharmacy
- baby and toddler services**
- Baby Clinic
- Baby Group
- Baby Health Drop-In
- Breast Feeding Group
- Immunisation Clinic
- Toddler Session
- Under 1s Group
- Under 2s Group
- Childminder
- Services**
- Breast Feeding support
- Children & Family Centre
- Community Midwifery
- library
- Nursery
- Playgroup
- School Nursery
- SpecNeeds
- Sports centre
- Schools**
- ★ independent
- ★ primary
- ★ Secondary
- ★ special

Produced by Carol Brown, HIU, NHS Lothian, 23 November 2011.
 Reproduced by permission of Ordnance Survey on behalf of HMSO (c) Crown Copyright and database right 2011.
 All rights reserved. Ordnance Survey licence number 0100022972

Appendix 4 – Green network map for the Haddington Area ¹⁰

¹⁰ This map was taken from the Open Space Strategy Consultation pages East Lothian Council's website (http://www.eastlothian.gov.uk/downloads/file/5145/strategic_green_network-haddington_cluster)



This map is reproduced from Ordnance Survey material with the permission of Ordnance Survey on behalf of the Controller of Her Majesty's Stationery Office © Crown Copyright 2012. Unauthorised reproduction infringes Crown copyright and may lead to prosecution or civil proceedings. 100017056

Legend

- Cluster Areas
- Core Paths 2010
- Greenspace Primary Land Use Codes**
- 6.1 - Public park and garden
- 6.4 - Playspace
- 6.51 - Playing fields
- 6.52 - Golf courses
- 6.61 - Green access routes
- 6.62 - Riparian routes
- 6.71 - Woodland
- 6.72 - Open semi-natural
- 6.73 - Open water
- 6.82 - Churchyard
- 6.83 - Cemetery
- 6.9 - Civic space
- Strategic Open Space Networks 300m Buffer

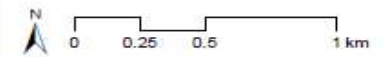


Figure 2e
Strategic
Green Networks
Haddington Cluster

