

East Lothian Local Development Plan

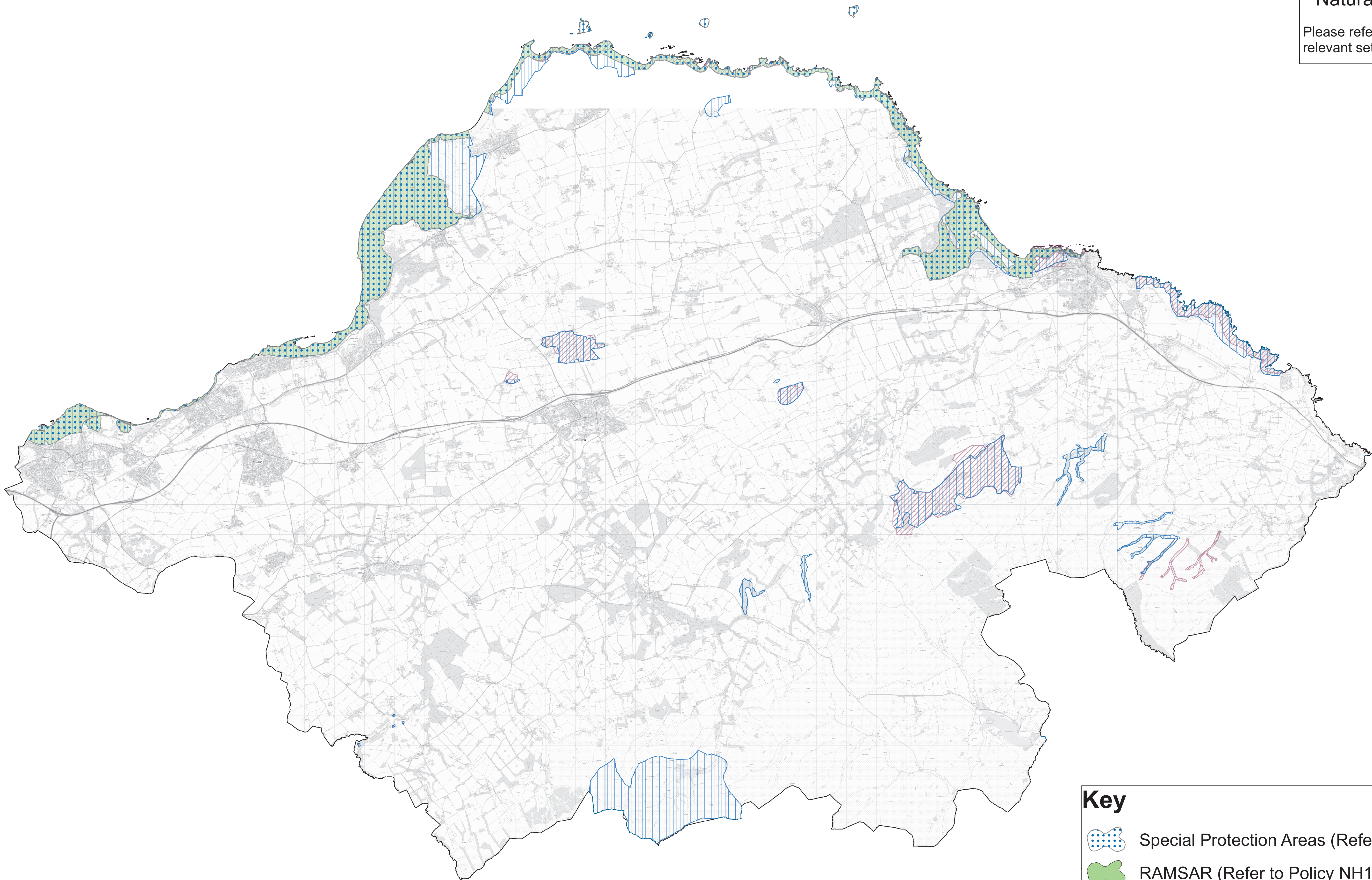
Map - 1 International & National Natural Heritage Designations



Reproduced from the Ordnance Survey map with the permission of the Controller of Her Majesty's Stationery Office(c) Crown Copyright 2017.
Unauthorised reproduction infringes Crown Copyright and may lead to prosecution or Civil Proceedings. Ordnance Survey Number 100023381.

Map - 1 International & National Natural Heritage Designations

Please refer to other maps 1-4 and the relevant settlement map.



Key

Special Protection Areas (Refer to Policy NH1)

RAMSAR (Refer to Policy NH1)

SSSI (Refer to Policy NH2)

Geological Conservation Review Sites (Refer to Policy NH2)