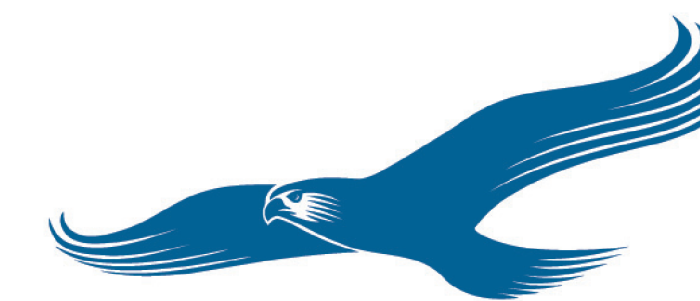




# East Lothian Local Development Plan

## Map 2 - Local Nature Conservaton Sites, Nature Reserves & Country Parks

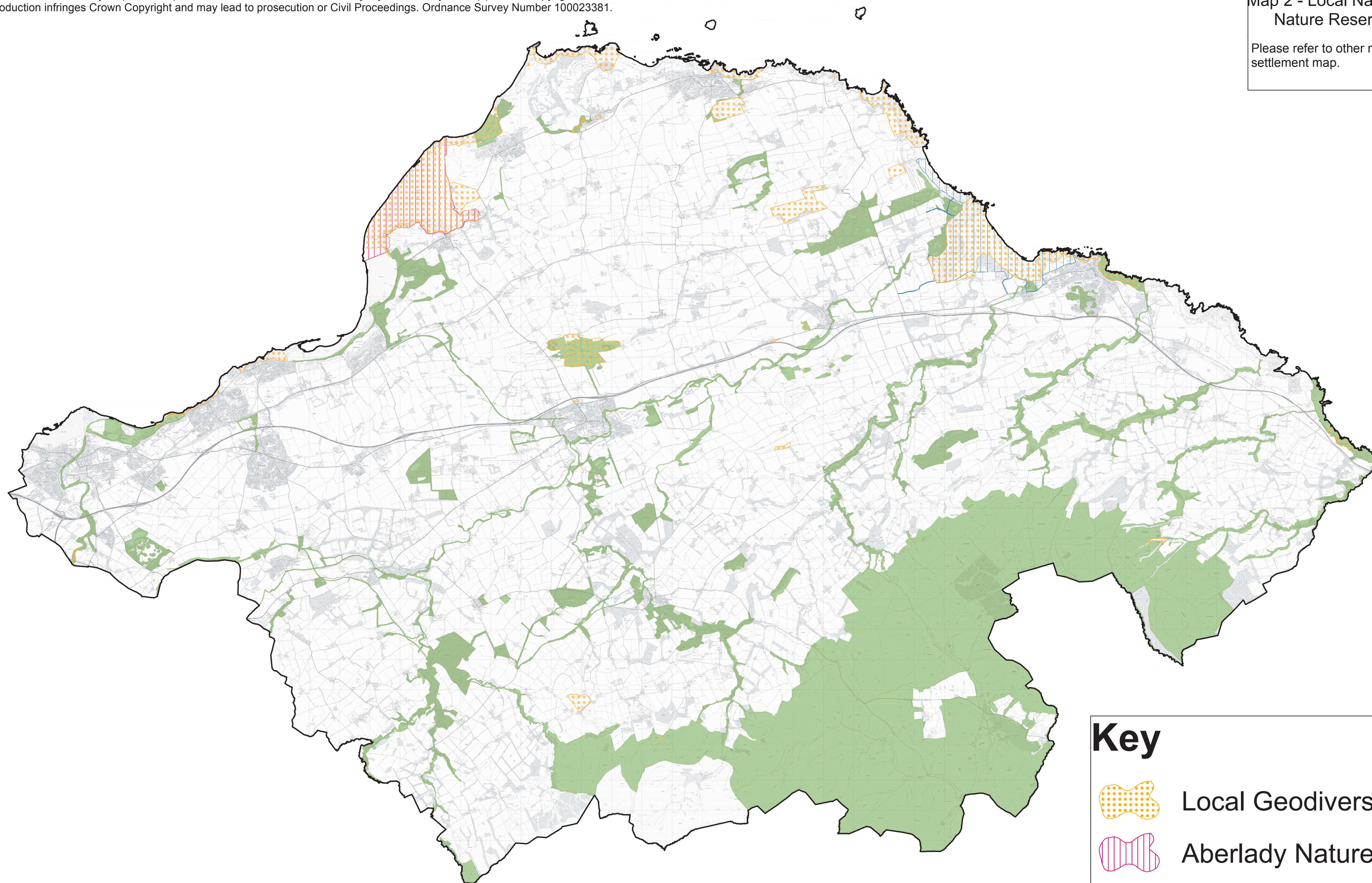


**East Lothian**  
Council

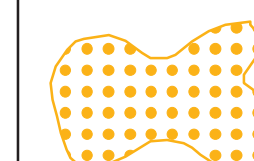
Reproduced from the Ordnance Survey map with the permission of the Controller of Her Majesty's Stationery Office(c) Crown Copyright 2017.  
Unauthorised reproduction infringes Crown Copyright and may lead to prosecution or Civil Proceedings. Ordnance Survey Number 100023381.

Map 2 - Local Nature Conservaton Sites,  
Nature Reserves & Country Parks

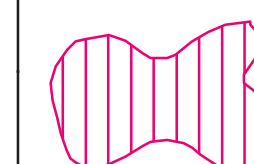
Please refer to other maps 1-4 and the relevant  
settlement map.



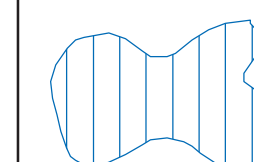
### Key



Local Geodiversity Sites NH3



Aberlady Nature Reserve NH3



John Muir Country Park NH3



Local Biodiversity Sites NH3