

## East Lothian Area Partnership Locations

- Musselburgh
- Fa'side
- Haddington & Lammermuir
- Dunbar & East Linton
- North Berwick Coastal
- Preston Seton Gosford



# 5<sup>th</sup> Annual Public Meeting

Tuesday 21 May 2019

# North Berwick Coastal Area Partnership

## 5<sup>th</sup> Annual Public Meeting

1. **Welcome, Introductions and Apologies**
2. **Election of Chair**
3. **Declaration of Interest**
4. **Presentation/Reports – Outcomes Achieved & Priorities – Sub Groups/Partners/Villages (5 mins each)**
5. **Budget Spend Priorities for 2019/2020 – Help the Partnership decide – look at our priorities, add your views.**
6. **5 Years On – How are we doing? An opportunity to add your views to the sticky wall – What's worked? What hasn't and What needs to happen next?**
7. **Area Plan**

**Thanks**

**Date of next meetings –Tuesday 11 June 2019**



# Membership

**1. Election of Chair**

**2. Election of Vice Chair**

**3. Membership Groups**

**Gullane Tenants & Residents**

**North Berwick Harbour Trust**

**4. Declaration of Interest**



## A VOICE FOR YOUR COMMUNITY

Have your Say in Making Our  
Community a Great

Place to:

Live

Work

Get Around

Visit

Learn

Play



# Who are we?

- Community Empowerment Act 2015
- Area Partnerships are the local voice of community planning
- Community Planning helps public agencies to work together with the community to plan and deliver better services
- **Overarching aim to reduce inequalities both within and between communities**

North Berwick Coastal  
Area Partnership

## A VOICE FOR YOUR COMMUNITY

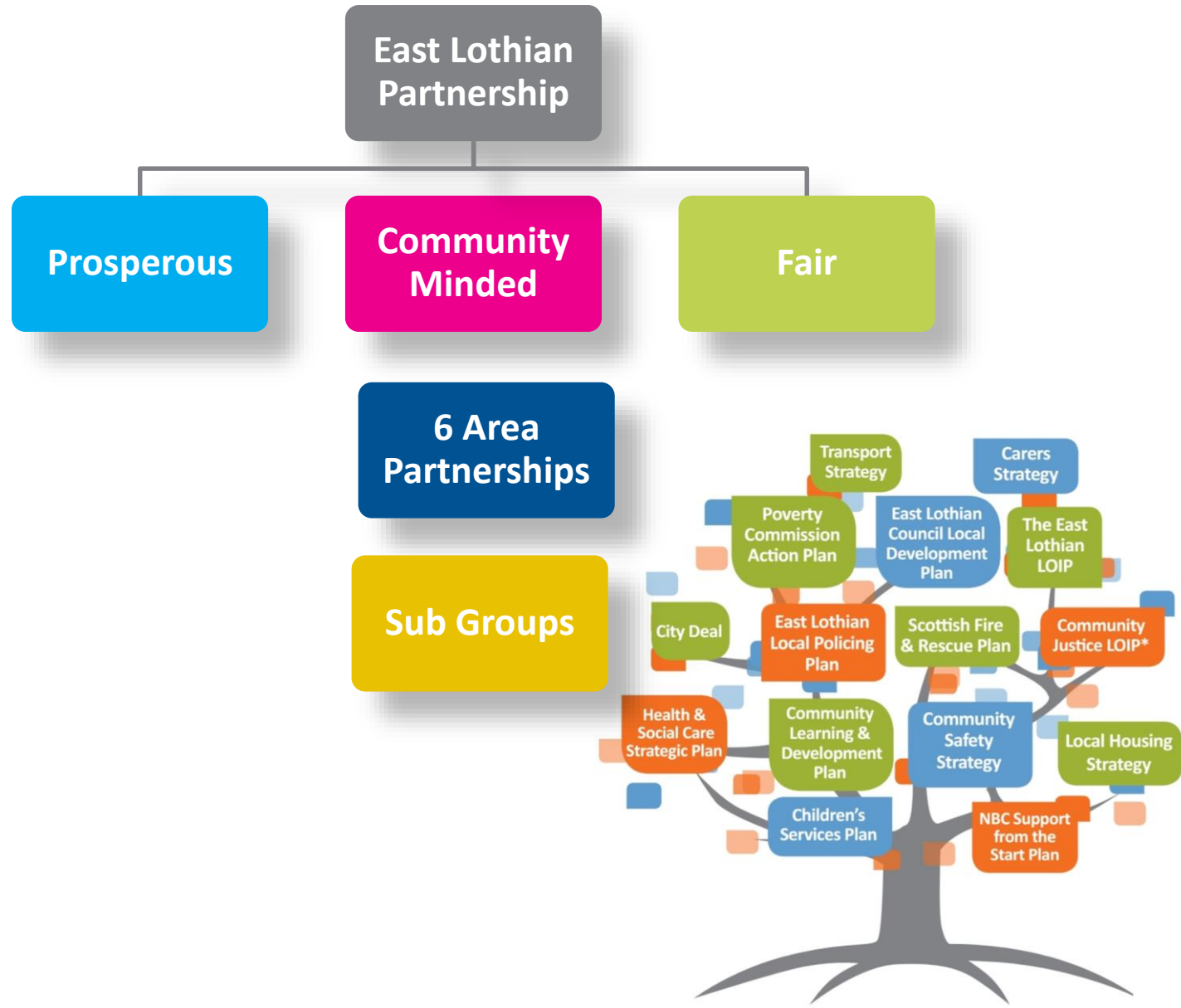
Have your Say in Making Our  
Community a Great  
Place to:

“

Live  
Work  
Get Around  
Visit  
Learn  
Play

”

# How does it all fit together?



# East Lothian POVERTY COMMISSION

*‘Overcoming poverty is not a gesture of charity. It is an act of justice. It is the protection of a fundamental human right, the right to dignity and a decent life.’*

Nelson Mandela

## What does inequality look like?

### Understanding North Berwick Coastal

This area plan has been shaped by a wide range of consultation and engagement activity over the last 4 years. Much of this activity has been led by the North Berwick Coastal Area Partnership, these consultations have given the local community an opportunity to tell us their views on what can be done to make it an even greater place for everyone.

The 2017 East Lothian Residents Survey reported that **99%** of respondents in the NBC ward rated their neighbourhood as a “very/fairly good” place to live.



**13,719**  
Population

Children & young people  
Working age 16-64  
Pensionable age 65+

#### Waste & recycling



Non-recyclable food packaging among the **200 waste bags collected daily** each summer creates **5 times more landfill** waste than equivalent weight of correctly disposed of recyclable waste.

**Increasing demand** for 1 bedroom homes



**Housing**

**Income deprivation**



NBC **5.1%**  
EL **9.8%**  
Scotland **12.3%**

**84%**

of respondents were satisfied with local bus service.  
EL average 77%

#### Travel & transport



6 NBC data zones are within the 20% **most access deprived** 4 of which are within the **top 10%** in EL and Scotland.

**12%** more chief earners commute within EL than in the rest of EL

**26.5%** residents aged 65+

12.9% are 75+  
7.9% are 80+

**Older people**

EL 65+ average: 22.9%

#### Second homes



NBC **345**  
EL TOTAL **611**

**11.6%** children live in poverty  
EL average 18.9%



#### Child Poverty

#### Economic activity

Footfall in North Berwick decreased by 16.6% from 2011/12 to 2013/14, before increasing by **13.7%** to a **five year high** in 2014/15

**90%\*** felt safe walking home at night in their neighbourhood



\*2017 EL Residents Survey respondents

#### Crime & Safety

#### Attainment

**95.7%** of school leavers have positive destinations



EL average 93.5%

**43%\*** of working age residents have a degree or professional qualification  
\*2011 Census



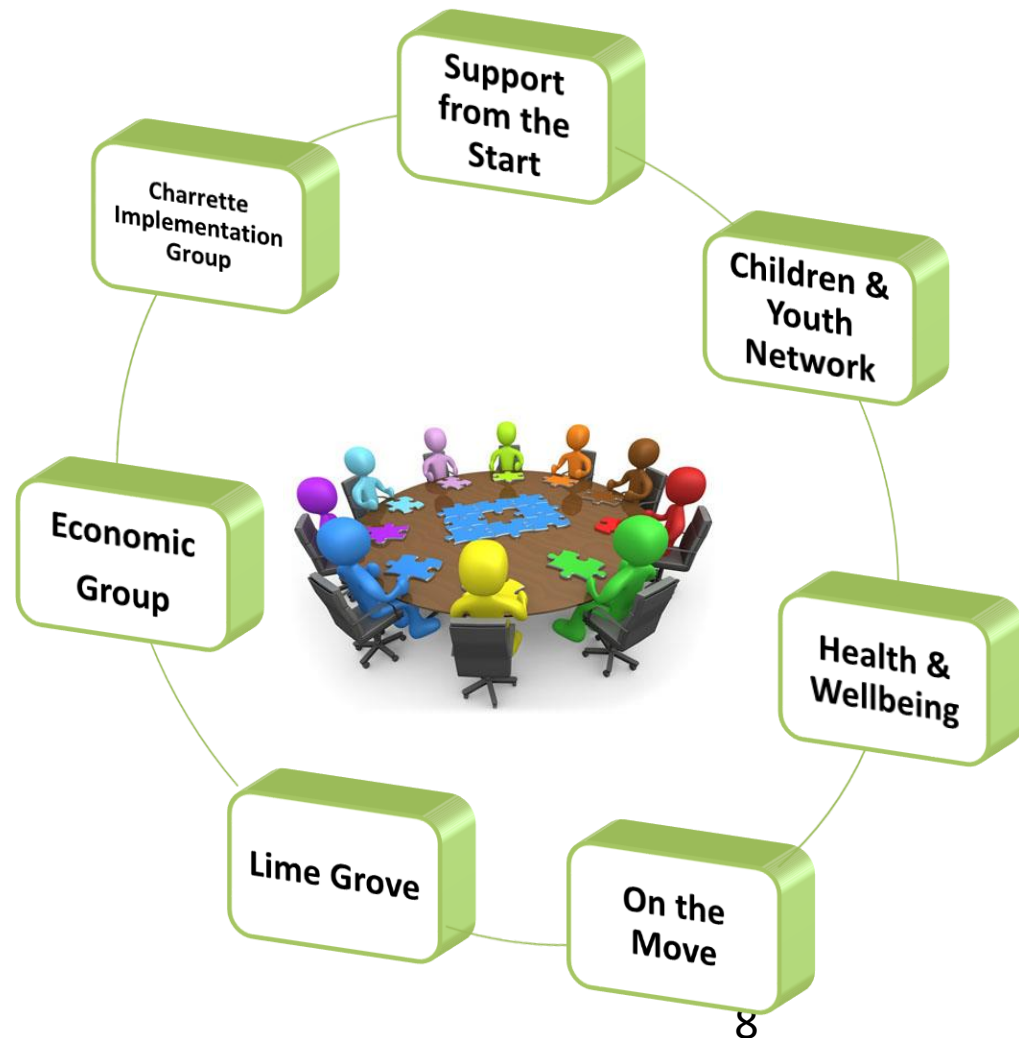
# Who are the Members?

The members of each Area Partnership are...



# The Sub Groups

**Working groups to deliver on the Area Plan**





## A VOICE FOR YOUR COMMUNITY

Have your Say in Making Our  
Community a Great  
Place to:

“

Live  
Work  
Get Around  
Visit  
Learn  
Play

”

# What do we do?

- **Develop a local Area Plan based on local priorities**
- **Monitor how that Area Plan is delivered**
- **Work in partnership with East Lothian Council**
- **Allocates resources and Area Partnership budgets to deliver the Area Plan**
- **It involves, engages and consults with the whole community and service providers to keep the Area Plan relevant.**

# Taking a Project Forward





# Budget Allocation

The Area Partnership can allocate:

£50,000 on general projects in the area



£50,000 of the Roads department budget for the area.



£100,000 (*time equivalent*) of the Amenity Services budget for the area



£100,000 for projects to raise educational attainment

Total for 2018-2019 = £300,000



# North Berwick Coastal Health & Wellbeing Association

## Achievements May 2018-2019

- **Reprovisioning of Health and Social care- organised two public meetings and attended IJB meetings. Formed the local North Berwick Reprovisioning Group in partnership with the NB Community Council, GP Surgery, Edington Hospital, Abbey Care Home, NB day Centre.**
- **Intergenerational Conference and allocation of small grants.**
- **Tackling Loneliness Project- worker appointed.**



# North Berwick Coastal Health & Wellbeing Association

- **Death, dying and grief- remembrance lunch and writing workshops in partnership with Scottish Poetry Library.**
- **Dirleton Village- lunch club, and intergenerational bowling and café chats.**
- **Sheltered Housing General Issues.**
- **Website development.**





# North Berwick Coastal Health & Wellbeing Association

## **Key Priorities May 2019-2020**

- **Reprovisioning of Health and Social Care - member of project team and local group.**
- **Tackling Loneliness Project- project implementation and sustainable funding.**
- **Developments in coastal villages**
- **Compassionate Community - bid**
- **Succession planning and increase local membership**

# Support from the Start

## 0-8 Years Family Worker

- **The Family Worker offers 1:1 support.**
- **Families can self-refer, and the majority of referrals take this form.**
- **Reasons for referral include:**
- **Lack of confidence in parenting skills**
- **Behaviour issues**
- **Difficulties establishing routines**
- **Anxiety and mental health issues (parent and child)**
- **Sleep and eating issues**
- **Supporting families where children have additional support needs**
- **Helping families to get access to other services**

# Support from the Start

## 0-8 Years Family Worker

- Year 1 in post – 40 families engaged with the service
- Year 2 in post – 29 new families engaged with the service, with 24 families from Year 1 engaging into the second year.
- Year 3 in post – Family Worker is currently supporting 25 families.
- Length of engagement varies from 1-2 visits to 16 months plus.
- 11 families have received support for 12 months or longer.
- In the supported families there are 103 children from pre-birth to P7.

# Support from the Start



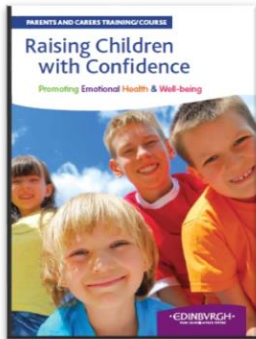
**The Family Worker delivers Baby Massage Classes, and also 1:1 Baby Massage as required.**

**70 babies have been able to access this since the classes started.**

- The Family Worker runs a Stay and Play session weekly during term-time in NB Community Centre. This is attended by an average of 15 families each week. The Family Worker is available at this time to speak to informally, and many parents take advantage of this opportunity.



# Support from the Start



- The Family Worker delivers the Raising Children with Confidence course, and 19 of the parents receiving support have chosen to attend.
- *“Fantastic course full of powerful information and understanding. It’s lovely to know nobody’s perfect and get strategies to deal with things.”*

The Family Worker facilitates the Bumps and Babies group at Gullane Medical Centre, for parents-to-be and babies under 1. This is a well attended group, where babies can be weighed, parents can chat and babies can socialise.





# Support from the Start

## Priorities

- **Support from the Start Family Worker**
- **Parenting Pathway – e.g. Raising Children with Confidence Course**



# Children & Youth Network

## Achievements:

- **Working to make sure this is a great place to live for children and young people**
- **Mental Health Youth Worker**
- **Employability Skills for Young People**
- **Work at North Berwick High School**
- **Raising Teens with Confidence Courses**
- **Youth Shelter consultation**
- **Resilience Residential**



# Children & Youth Network

## Achievements:

### Mental health Youth Worker in his third year

- Total number of people who have engaged with the project: 1,176
- CAMHS referral rates for the North Berwick area after the first year dropped by **30%**
- The YP Core self-assessment of anxiety / depression has dropped from 20.2 to 8.5, a reduction of **57%**
- The number of young people who would recommend the Guided Self-Help service to other young people is **95%**
- Unauthorised absences went from 75 (1 month prior to starting GSH) down to 19 (2 months after completion), a reduction of **75%**

### Employability work

- 44 young people
- Providing 1 pre-activity agreements and 1 activity agreement for EL Works
- 4 College applications

### Youth Work at North Berwick High School

- Co-delivered Cool Calm and Connected to all S1
- Worked with 8 young people in the Princes Trust Group
- Worked with 18 young people delivering Feel Good, Be Confident
- Co-delivered supported transitions for 22 young people





A photograph of a park with tall trees, a green lawn, and a hedge.

# Children & Youth Network

## **Priorities :**

- **Mental Health Youth Worker**
- **Employability Skills for Young People**
- **Resilience Residential**
- **Youth Shelter (lighting costs)**
- **Youth Worker in North Berwick High School – Princes Trust**
- **Individual Youth Work at North Berwick High School with vulnerable transition group from primary.**
- **Duke of Edinburgh**



# Youth Shelter

## Lighting for shelter







Lauren Cowie

**NORTH BERWICK YOUTH PROJECT**

**RESILIENCE RESIDENTIAL**

FUNDED BY THE NBC AREA PARTNERSHIP

# What we applied for

- WE APPLIED FOR £3,500 TO TAKE 8 YOUNG PEOPLE ON A 5 DAY RESIDENTIAL, MOST OF WHOM HAVE ADDITIONAL SUPPORT NEEDS AND SOME WERE ECONOMICALLY DIASADVANTAGED.
- THE TOTAL COST OF THE RESIDENTIAL WAS £4,407. THE YOUTH PROJECT ABSORBED THE REMAINING COST.
- THERE WAS NO FEE TO THE YOUNG PEOPLE WHO ATTENDED.
- ALL YOUNG PEOPLE WERE IDENTIFIED BY STAFF WHO FELT THEY WOULD BENEFIT FROM THE EXPERIENCE.

# What we hoped to achieve

- BUILD RESILIENCE AND HELP YOUNG PEOPLE BECOME MORE ENGAGED IN THEIR LEARNING
- REACH INDIVIDUAL TARGETS AND GOALS, SET WITH YOUNG PEOPLE AND WITH INPUT FROM NBHS AND LAW
- IMPROVE INTERPERSONAL & TEAMWORK SKILLS
- BUILD CONFIDENCE AND SELF ESTEEM
- CLOSE THE ATTAINMENT GAP BETWEEN THE MOST AND LEAST DISADVANTAGED YOUNG PEOPLE
- IMPROVE HEALTH & WELLBEING

# How we worked towards our aims

- THE TARGETS WHICH WERE SET WITH THE YOUNG PEOPLE AND THEIR SCHOOLS WERE RELEVANT AND CAN BE CONTINUED IN ORDER FOR THE YOUNG PEOPLE TO STRIVE TO 'AIM HIGHER'.
- A VARIETY OF ACTIVITIES WHERE THE YOUNG PEOPLE TOOK ON PHYSICAL, MENTAL AND SPIRITUAL CHALLENGES, REQUIRING TEAM WORK AND INTERPERSONAL SKILLS.
- OUR MENTAL HEALTH YOUTH WORKER RAN A GROUP SESSION ON MINDFULNESS AND MEDITATION AS WELL AS SEEING EACH YOUNG PERSON 1:1.
- CLOSING THE ATTAINMENT GAP BY GIVING ALL YOUNG PEOPLE THE OPPORTUNITY TO SUCCEED THROUGH OPPORTUNITIES AND SUPPORT TO INCREASE THEIR SKILLS.

# The Young People

- ALL YOUNG PEOPLE WERE AGED P7 - S2
- 3 MALE AND 5 FEMALE
- MOST OF THE YOUNG PEOPLE HAVE ADDITIONAL SUPPORT NEEDS
- ALL OF THE YOUNG PEOPLE WERE IDENTIFIED AS HAVING LOW ATTAINMENT OR ON THE CUSP OF LOW ATTAINMENT
- SOME OF THE YOUNG PEOPLE ARE FROM A CARE EXPERIENCED BACKGROUND



# Measuring the Outcomes

- SHANARRI EVALUATIONS WERE COMPLETED BY EACH YOUNG PERSON WHERE THEY SCORE THEIR FEELINGS TOWARDS FEELING SAFE, HEALTHY, ACTIVE, NURTURED, ACHIEVEING, RESPECTED, RESPONSIBLE AND INCLUDED. THEY DID THIS AT THE START AND AT THE END OF THE RESIDENTIAL.
- YOUNG PEOPLE WERE ALSO ASKED TO RATE HOW CONFIDENT THEY FELT, HOW WELL THEY THOUGHT THEY WORKED AS A TEAM AND HOW GOOD THEY WERE AT ACHIEVEING TARGETS.

# What the young people said

AVERAGE SCORE WITH 5 BEING BEST	AT START.	AT END.
CONFIDENT	3	4.25
TEAM WORK	3	4.37
ACHIEVING TARGETS	3	4.25
HOW SAFE DO YOU FEEL	3.25	4.25
HOW HEALTHY DO YOU FEEL	3.75	3.62
HOW ACTIVE DO YOU FEEL	3.6	4.12
I AM NURTURED	4.1	4.37
ACHIEVING	2.87	4
RESPECTED	3.5	4.25
RESPONSIBLE	3.25	4
INCLUDED	3.5	4.12

**ALL YOUNG  
PEOPLE NOTED  
AN INCREASE IN  
HOW THEY FELT  
5 DAYS LATER  
AT THE END OF  
THE EXPERIENCE**

# Measuring Impact

- NBHS
- LAW
- TOUCHING BASE WITH THE YOUNG PEOPLE
- PARENT FEEDBACK
- CONTINUED SUPPORT





# Lime Grove Asset Transfer

- North Berwick Community Development Company was set up on 12 June 2018. It has over 1,200 members.
- A Community Asset Transfer Request for Lime Grove was submitted on 13 July 2018.
- The CAT was refused on 12 April 2019 on the grounds that
  - there was insufficient evidence it would promote community benefit
  - concerns about funding , governance, sustainability, deliverability of the Proposal
  - insufficient evidence of community support for the Proposal.
- The Lime Grove Asset Transfer Group agreed unanimously that NBCDC should request a review.
- The review was submitted on 17 May 2019.



# On the Move

## **North Berwick Town Centre Charrette Priorities**

- **Traffic modelling to test out recommendations from the Charrette e.g. Widen Pavement East End High Street**
- **Remodelling of Junctions - West Gait to Abbey Road**
- **East Beach Ramp**
- **Parking Map**
- **North Berwick Toilet Scheme**



# On the Move Priorities

- **North Berwick Town Centre Charrette Priorities**
- **Traffic modelling to test out recommendations from the Charrette e.g. Widen Pavement East End High Street**
- **Parking Map**
- **Promotion of Toilet Scheme**
- **Hope Rooms Parking Bays**
- **Lodge Grounds Signage**
- **Safe Route to Schools**
- **East Lothian Community Rail Partnership Survey**



# **Work in the Villages**

**New play equipment at Gullane  
Goosegreen Playpark**

**New benches and picnic tables at Gullane  
bents**

**New benches at Aberlady Playpark**



# Dirleton Village Association

- **Dirleton Bus Shelter Roof Repairs**
- **Dirleton Hedge Planting Project**
- **Dirleton Bowling Club Technical Specification for Improvements**
- **Dirleton Public realm Heritage Project – Survey**

# Dirleton Village Association

## The War Memorial Green Community Enhancement Proposals



Learning from elsewhere



# Dirleton Village Association



And Learning from the Past



# Dirleton Village Association

**Here are some of the issues or problem areas -**



Lamppost positions and style  
spoil the designed landscape

# Dirleton Village Association





# Dirleton Village Association



The lower section of road and green is prone to flooding



# Dirleton Village Association



Rain and vehicles create muddy verges



'Clutter' spoils the approach to the Kirk

# Dirleton Village Association



Church railings are missing and  
gate light needs upgrading

# Dirleton Village Association





# Dirleton Village Association



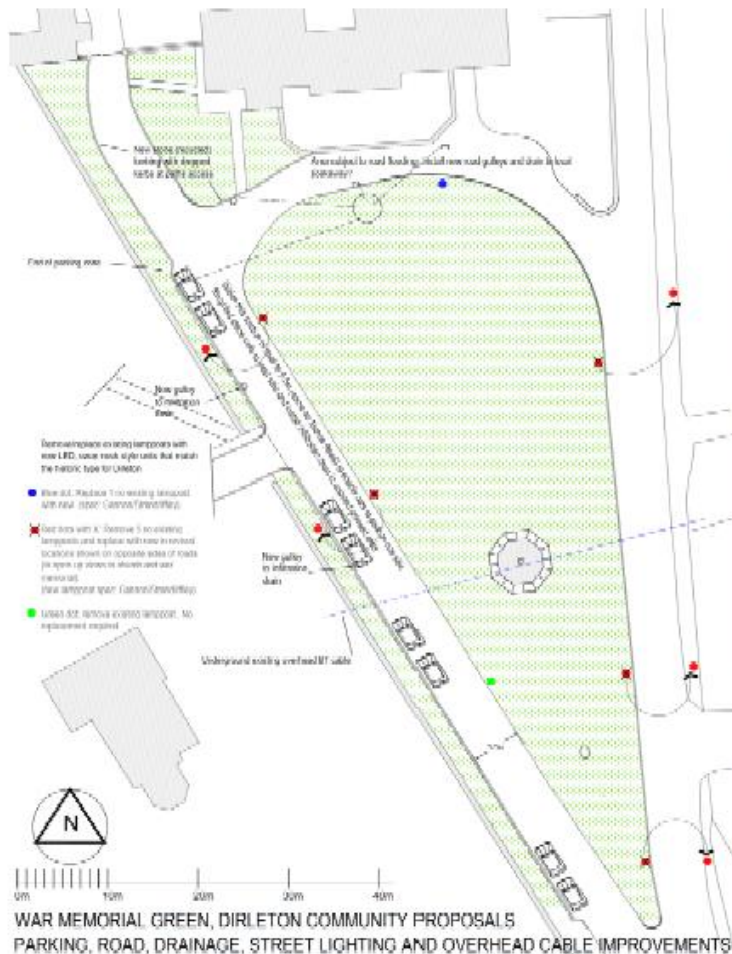
War Memorial suffering from erosion and requires repointing



Vacation stone  
needs care



# Here are some ideas



Historic style of lamppost proposed



# 2019/2020 Priorities

**Any other Priorities?**



# 2019/2020 Priorities

- The partnership has identified priorities for 2019/2020
- You can help the Partnership make the final decision on budget spend by adding your sticky dots to your priorities – 5 dots each section in your pack

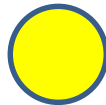
General Budget



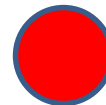
Educational Attainment



Roads



NON MEMBERS 5 DOTS per section



**An opportunity to add your views to the sticky wall:**

**What's worked?**

**What hasn't?**

**What needs to happen next?**

**5 Years On – How are we doing?**

---