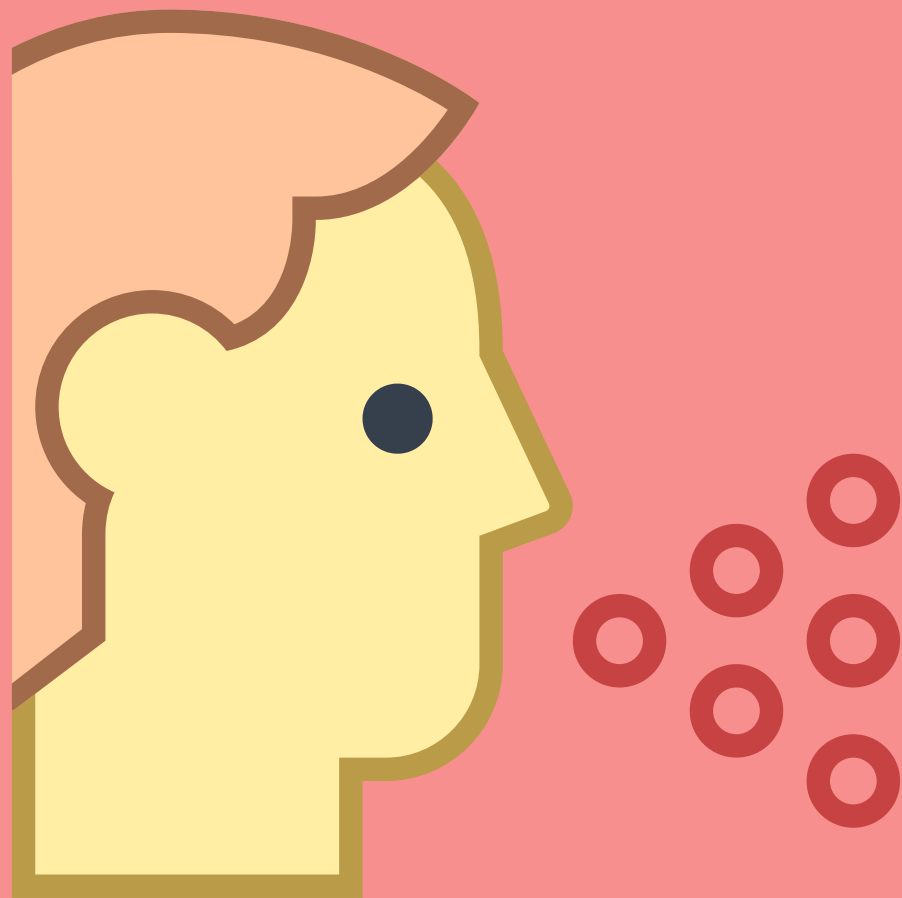


Using Perspex Screens

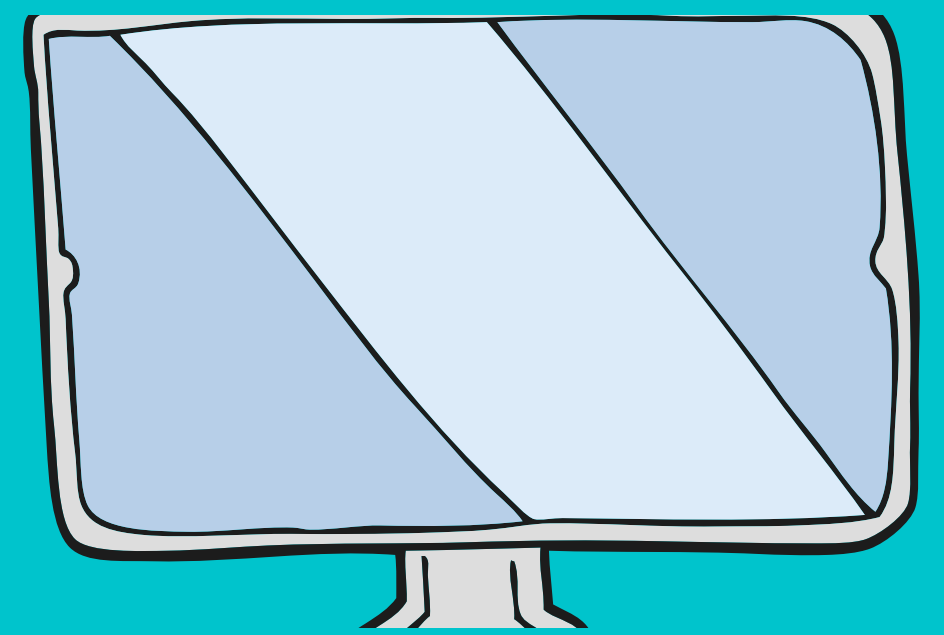


Why use screens at work?

1. Creates a physical barrier.
2. Protects staff and customers.
3. Reduces the spread of COVID-19.

Installation

1. The screen should provide full facial coverage.
2. Consider the height and width of the screen required.
3. Also consider the height and angle at which it is to be positioned.
3. Secure firmly to the workstation.



Cleaning of the screen

1. Clean and disinfect the screen frequently.
2. Discard any cleaning materials after use.
3. Wash your hands.

