



East Lothian
Council

**Community Councils
Induction
Resilient Communities/Events**

Tuesday 1st February 2022

Community Councils Resilient Communities/Events

Sandy Baptie, Emergency Planning, Risk & Resilience Manager
Jon Fleetwood, Emergency Planning, Community Resilience & Events Officer

Community Councils Resilient Communities/Events Timetable

7pm	Resilient Communities	Sandy Baptie
7.45pm	Questions/discussion	Open
7.55pm	Break	
8pm	Events	Jon Fleetwood
8.15pm	Questions/discussion	Open
8.30pm	Close	

Community Councils Resilient Communities/Events

Aim

To ensure:

- East Lothian residents are prepared to deal with any emergency or other unexpected event, working with East Lothian Council and partner agencies, to enable them to prepare and take action on the lead up, during and after, such an event.
- Community Councils are aware of the processes related to organising an event in East Lothian.

Community Councils Resilient Communities

‘Resilient Communities’

Community Councils Resilient Communities

Risk

What are the significant risks that could (have) impact (ed) on
East Lothian?

Community Councils Resilient Communities

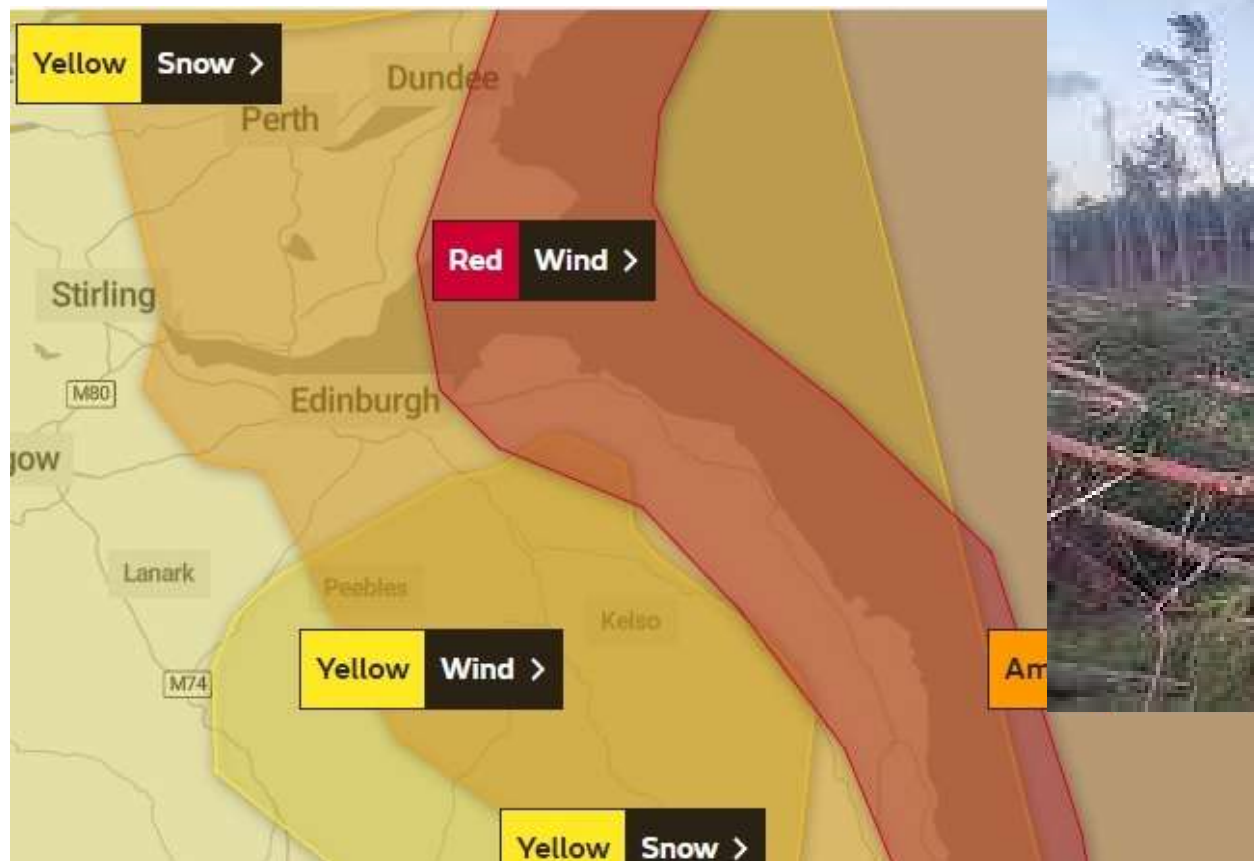
Risks: East Lothian

- Severe Weather
- Flooding - Rivers
- Flooding - Coastal
- Oil Pollution
- Gas pipeline
- Torness
- A1
- Rail Crash
- Terrorism
- Events

Pandemic!!!!!!

and ?

2021: Storm Arwen



January 2022: Storm Malik



Community Councils Resilient Communities

Sorry but.....

ALWAYS EXPECT THE UNEXPECTED

Community Councils Resilient Communities

‘Background to ‘Resilient Communities’

Community Councils

Resilient Communities

- Resilient Communities is an initiative supported by Local, Scottish, and the UK Governments, the principles of which are, communities and individuals harnessing and developing local response and expertise to help themselves during an emergency, in a way that complements the response of the emergency responders.
- The ethos of the Resilient Communities is to formulate and co-ordinate voluntary support and assistance and direct this to those that require it within a community, ***in a non mechanised manner of response..***

- <https://youtu.be/1Kwfj4l1wAU>

Community Councils

Resilient Communities

- A resilient community is achieved by using a framework, thereafter called a 'Resilient Community Plan'; that is specific to the Community Council area and can be split down into local areas if required. The plan will contain a community profile, community area maps, flood maps, risk assessment, asset register, insurance information, and general guidance for individuals or the community.
- It is important to note that the Resilient Communities Plan is not in anyway a method by which a local authority or an emergency service may reduce its response or service to the community, the plan is intended to support and enhance the response.

Community Councils Resilient Communities

The aims of the Community Council, Resilient Communities plan are to:

- Raise awareness and understanding of the local risk and emergency response capability in order to motivate and support self resilience.
- Increase individual, family and community resilience against all threats and hazards.
- Support and encourage effective dialogue between the community and the practitioners supporting them.
- Provide a framework and support to enable the creation and delivery of a resilient community plan.
- Assess and develop communication systems to ensure communities are given appropriate warnings of severe weather etc.
- Evaluate the outcome and success of the plan following operation.

Community Councils

Resilient Communities

Benefits of a Resilient Communities Plan

Volunteering and helping one another does not need to be organised centrally by government or by the Local Authority. Local community councils and individuals who are prepared and able to respond effectively, can deal with local issues, such as;

- The clearing of snow from pathways of people who are unable to clear those themselves, to allow access etc.
- The clearing of snow from school and nursery playgrounds.
- The placing of sandbags in risk areas to prevent flooding, placing domestic flood gates into position.
- The delivery of supplies during severe weather, for example, hot meals, water etc.
- Providing hot meals and assistance within community centres and village halls.
- Checking on neighbours to ensure their safety and well being during severe weather etc.

Community Councils Resilient Communities

Contents of a Resilient Communities Plan

- Community Profile
- Community Data
- Community Council Map
- Flood or other identified risk map
- Gritting Routes and Grit Bins
- Community Risk Assessment
- Co-ordinators & Volunteers
- General Information & Safety Information
- Household Emergency Plan
- Volunteer Questionnaire
- Helpful Links and Documents

Community Councils Resilient Communities

General Information & Advice

- Co-ordinators & Volunteers
- Communication System
- Community Volunteers Call Tree
- Insurance
- Disclosure
- Legal Disclaimer
- Health & Safety Advice
- Household Emergency Plan
- Community Emergency Agenda Advice

Community Councils Resilient Communities

ELC Objectives

- Assist communities to increase their resilience in the event of any emergency or other unexpected event.
- Promote and highlight Resilient Communities.
- Listen to the experiences of community groups who have previously engaged with Resilient Communities including, experience, best practice and challenges.
- To provide communities with advice, information and reassurance on ways they can be better prepared for emergencies and unexpected events.
- To highlight responder agencies, including the voluntary sector, and the challenges they face.
- To warn and inform of any identified 'risk'.

Gullane & Dirleton Community Resilience Plan

Plan last updated: 30-Jun-19



**IF YOU ARE IN IMMEDIATE DANGER
CALL 999**

Location

- 1 Entrance to Fenton Gait
- 2 West Fenton Rd – path
- 3 Main St- At School Crossing
- 4 Muirfield House o/s 36-38
- 5 Muirfield Dr- Jnct Main St
- 6 Muirfield Dr Opp No 11
- 7 Muirfield Dr Garden No36
- 8 Garleton Crt Opp No15
- 9 Muirfield Gdn o/s No 10
- 10 Muirfield Terr O/S School
- 11 Muirfield Terr o/s School
- 12 Whim Rd O/s Sandyle Ho
- 13 Hill Road O/s Sandy Lane
- 14 Marine Terr Opp Sandy Loan
- 15 Hopetoun Park O/s No 49
- 16 Erskine Rd Opp The Loan
- 17 The Falcons Beside Garages
- 18 Hamilton Rd Opp No17
- 19 Garleton Crt No32
- 20 Hall Cres at Village Hall
- 21 Hall Cres Next to Cherish
- 22 Muirfield Dr Car Park
- 23 Muirfield House no4 Garage
- 24 Saltcoats Rd Next Smiddy
- 25 Muirfield Riding Therapy
- 26 Fenton Gait o/s No25



Grit Bins

Map data ©2018 C



Helping Hand Needed

A Gullane Resilience Team Initiative

Update plan

Identify those who can help spread the word

Young people

Ensure we have up to date contact details

Whats app group

Specific email account

Publicity

Community Councils Resilient Communities

**Penny Short, Garvald & Morham:
Organising and running a Resilient
Communities exercise including the use of
social media.**

East Lothian Council: Resilient Communities



East Lothian Council: Resilient Communities



Community Councils Resilient Communities



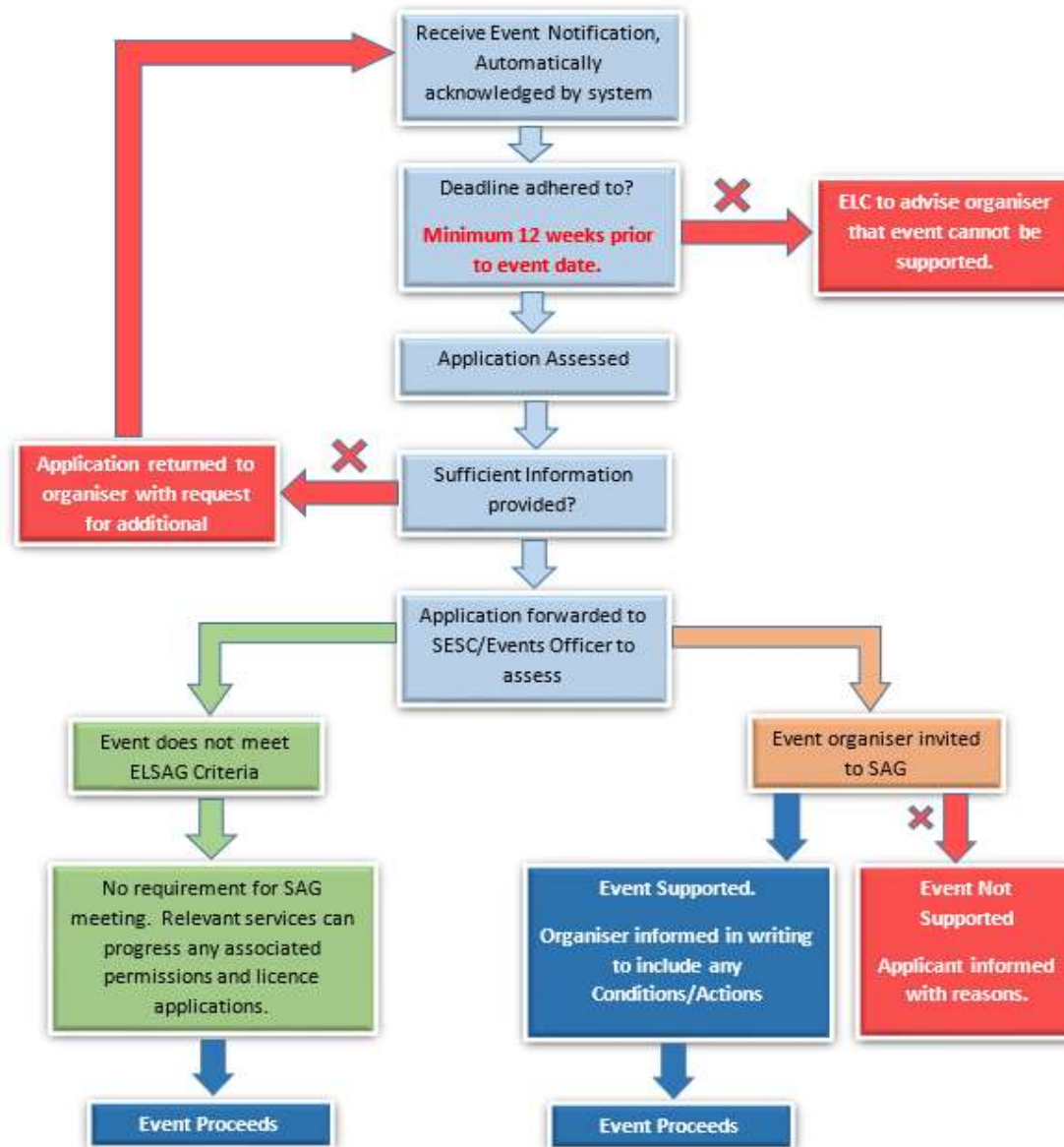
Community Councils Resilient Communities/Events



Community Councils Events



Figure 1. – Safety Advisory Group Process



Community Councils Events

Which Events are subject to the SAG process?

The guiding principle for determining which events are covered by the ELSAG process are those events that may impact on public safety or the wellbeing of the community, considered on a risk-based approach through the following criteria:

- The status of the principal attending
- The status of the event organisers
- The profile of the event
- Event category and size
- Type of Activity
- Event site
- Whether alcohol is available or any other licence is required
- Transport implication
- Impact upon local community
- Event safety concerns raised by a SAG representative

Community Councils Events

Safety Advisory Group (SAG)

SAG Aim is to ensure that event organisers uphold the highest standards of public safety at public events.

Community Councils Events

The SAG will:

- Provide specialist advice to Event Organisers to help them discharge their public safety functions.
- Encourage the safety and wellbeing of the public and staff at public events.
- Ensure as far as possible that any inconvenience to residents, businesses and the general public arising from events is minimised.

Safety Advisory Group Members



SAG Outcomes/Decision Made

The agencies present at this SAG meeting agree that the event can proceed on the understanding that all actions will be completed in the agreed time frame.

The agencies present at this meeting require a further SAG meeting in relation to this event.

The agencies present at this SAG meeting agree that, in its current format, this event cannot be supported.

Community Councils Events



Community Councils

Resilient Communities/Events

Aim

To ensure:

- East Lothian residents are prepared to deal with any emergency or other unexpected event, working with East Lothian Council and partner agencies, to enable them to prepare and take action on the lead up, during and after, such an event.
- Community Councils are aware of the processes related to organising an event in East Lothian.

Community Councils Resilient Communities/Events

**Thank you
For
your participation**