

## EAST LoTHIAN CYCLE FORUM

### Notes from online meeting held on Thursday 31<sup>st</sup> August 2023 Microsoft Teams

#### Present:


Cllr Shona McIntosh (SMc) – Chair  
 Cllr John McMillan (JMc) – Provost and Cabinet Spokesperson for Environment, Economic Development and Tourism  
 Chris Milne (CM) – ELC Active Travel Officer (Note taker)  
 Simon Law (SL) – ELC Project Manager Active Travel  
 Richard Kerr (RK) – ELC Project Officer Active Travel  
 Mark Holling (MH) – Cycleforth  
 Brett Walker (BW) – North Berwick Coastal on the Move  
 Gordon Webber (GW) – Cycling UK  
 Derek Williams (DW) – Musselburgh area active travel  
 Hanna Lundstrom (HL) - ELC Sustainability and Climate Change Officer  
 Mark James (MJ) – Sustaining Dunbar  
 Philippa Barber (PB) – ELC Associate Instructor Outdoor Learning / Bikeability Scotland lead  
 Michael Campbell (MC) – ELC Club & Community Sport Development Officer  
 Lucia Santana (LS) – Love to Ride  
 Nick Morgan (NM) – ELC Access Officer  
 Rhodri Thomas (RT) – Sustrans

#### Apologies:

Tim Harding, Jenna Rhodes, Nicola McNeill, Blair Fletcher, Louise Hastie, Saartje Driver, Gordon Hall, Ian Pryde, Fiona Crombie.

		Action										
1.	<b>Welcome &amp; Apologies</b> Councillor McIntosh welcomed everyone to the meeting and new attendees were given the opportunity to introduce themselves.											
2.	<b>Notes of Previous Meeting held on 24<sup>th</sup> May 2023</b> Meeting notes had been circulated prior to the meeting.  <b>MJ</b> points out Minute 5 (Quiet Roads) and clarifies that he asked whether relevant signage could be larger and <u>less</u> frequent. The original Minutes incorrectly recorded this as larger and <u>more</u> frequent. <b>CM</b> will update this record and re-publish the Minutes.  The remaining notes were accepted as an accurate record.	<b>CM</b>										
3.	<b>Matters Arising</b>  <b>SMc</b> notes that national funding for active travel was discussed at the last forum and asks for an update. <b>CM</b> confirms that capital funding for ELC has remained the same as the previous year. Revenue funding was in significant doubt, with a decision delayed by 3 months, however full funding was eventually awarded in early July. While this delayed the launch of the partnership with Love to Ride, no planned work was cancelled. <b>CM</b> also confirms that ELC have received no word yet on funding for 2024/25.  <b>JMc</b> notes that it would be helpful to have a note of grant funding we receive for active travel in future.  <u>UPDATE 18.09.23: Core funding awarded to East Lothian Council for 2023/24 is:</u> <table><tr><th>Grant</th><th>Award 2023/24</th></tr><tr><td>Smarter Choices, Smarter Places core revenue grant <i>(Note this award covers a broad range of sustainable transport work, including active travel)</i></td><td>£98,400</td></tr><tr><td>Smarter Choices, Smarter Places additional grant award 23/24</td><td>£7,300</td></tr><tr><td>Cycling Walking Safer Routes Core Capital Award</td><td>£700,000</td></tr><tr><td>Direct Resource Grant Core Award</td><td>£30,000</td></tr></table>	Grant	Award 2023/24	Smarter Choices, Smarter Places core revenue grant <i>(Note this award covers a broad range of sustainable transport work, including active travel)</i>	£98,400	Smarter Choices, Smarter Places additional grant award 23/24	£7,300	Cycling Walking Safer Routes Core Capital Award	£700,000	Direct Resource Grant Core Award	£30,000	
Grant	Award 2023/24											
Smarter Choices, Smarter Places core revenue grant <i>(Note this award covers a broad range of sustainable transport work, including active travel)</i>	£98,400											
Smarter Choices, Smarter Places additional grant award 23/24	£7,300											
Cycling Walking Safer Routes Core Capital Award	£700,000											
Direct Resource Grant Core Award	£30,000											

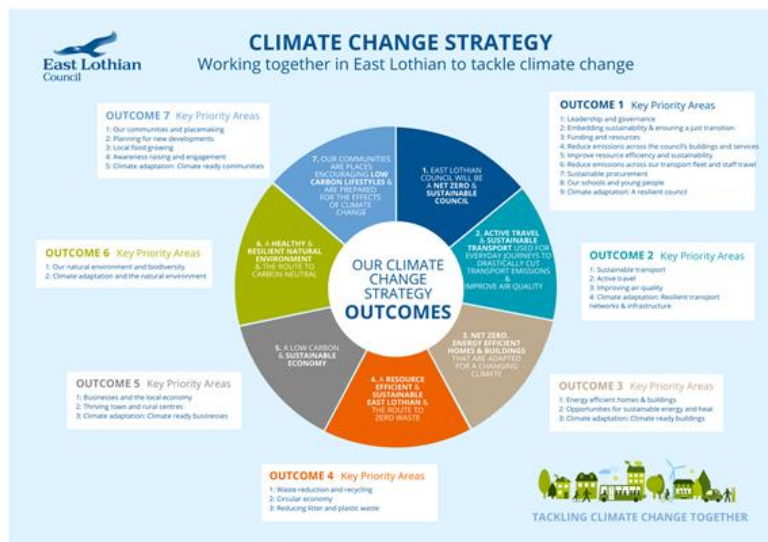
	<p><b>SMc</b> asks for an update on plans for shared residential bike hangars. <b>CM</b> confirms that this is being looked at and we hope to make an application to Cycle Scotland's grant fund by October.</p> <p><b>BW</b> updates that he has made contact with City of Edinburgh Council regarding their use of Compulsory Purchase Orders but is awaiting a meeting. BW also thanks Michael Naysmith (ELC's Sustrans Embedded Officer) for discussing Quiet Route options with North Berwick Coastal Connected Communities Manager Doug Haig. <b>CM</b> confirms that Doug or the community should email the active travel mailbox (<a href="mailto:activetravel@eastlothian.gov.uk">activetravel@eastlothian.gov.uk</a>) when they are ready to formally request consideration for the route in question.</p> <p><b>BW</b> asks for an update on progress exploring active travel improvements between Aberlady and Longniddry. <b>CM</b> confirms that initial discussions are ongoing with Wemyss &amp; March estate and Sustrans.</p> <p><b>CM</b> highlights the request by MH to discuss advanced cycle lines and separate green lights for cyclists at this meeting. CM contacted MH to request that this is discussed at the next meeting in November, where it will be possible to have a full discussion. MH will prepare a short discussion paper and share with members in advance of that.</p> <p><b>JMc</b> notes progress on the path around <a href="#">East Lothian Community Hospital in Haddington</a>, which is not on the written project update. <b>NM</b> advises that planning permission has been granted. This project is the result of discussions with NHS Lothian which began 14 years ago, highlighting the length of time that it can sometimes take to implement changes on land not owned by ELC. <b>RT</b> confirms that Sustrans team are currently mobilizing for the project and that work should begin very soon.</p> <p><b>DW</b> asks for clarity on the type of crossing that is proposed for the A199 in Musselburgh (see project updates). <b>CM</b> understands that this will be a refuge island. DW asks whether plans have been developed or can be shared in future and CM confirms that he will talk to officers working on this project.</p>	<p><b>MH</b></p> <p><b>CM</b></p>
4.	<p><b>Love to Ride East Lothian</b></p> <p><b>LS</b> introduced herself as Love to Ride's Community Engagement Manager for Edinburgh and the Lothians and gave an overview of the work that they will be delivering in East Lothian during this financial year:</p> <ul style="list-style-type: none"> <li>• <a href="#">Love to Ride</a> is an online cycling and behaviour change platform that supports more people to ride bikes across East Lothian.</li> <li>• The key aims for Love to Ride are: <ul style="list-style-type: none"> <li>○ Supporting new and non-confident cyclists to cycle for everyday journeys</li> <li>○ Supporting East Lothian businesses</li> <li>○ Attend events and work with partners to co-promote services</li> <li>○ Provide measurable impact to East Lothian Council on engagement and behaviour change</li> </ul> </li> <li>• The Love to Ride platform will create a sense of community by allowing people to log rides and share their stories throughout the year. Quick courses will be provided alongside local info, tips] and routes. Rewards and incentives will be provided including prize draws and collection community goals, all tied in to a calendar of campaigns including <a href="#">Cycle September</a>, Winter Wheelers and Ride into Spring.</li> <li>• The Love to Ride website will allow workplaces, groups or clubs to set up their own message board and community goals.</li> <li>• Actions that members can take to support Love to Ride include: <ul style="list-style-type: none"> <li>○ Sharing details and promotional materials on social media</li> <li>○ Donating prizes</li> <li>○ Setting up groups and workplaces to encourage participation</li> </ul> </li> </ul> <p><b>LS</b> can be contacted via <a href="mailto:lucia@lovetoride.net">lucia@lovetoride.net</a></p> <p><a href="https://www.lovetoride.net/eastlothian">https://www.lovetoride.net/eastlothian</a></p>	

	<p><b>SMc</b> and <b>JMc</b> thanked <b>LS</b> for her presentation. <b>JMc</b> emphasised the need to make links with schools and tourism, as well as asking whether results of Love to Ride's work can be published in future. <b>LS</b> agreed to share resources and links and agreed on the focus with schools, particularly staff.</p> <p><b>JMc</b> asks for a tie-in with the Poppy Scotland Sportive on September 24<sup>th</sup> and <b>LS</b> confirms that Love to Ride are already scheduled to attend.</p> <p><b>SMc</b> wonders whether teachers could be encouraged to compete across schools using this platform and asks ELC Officers to consider following up on this. <b>RK</b> notes that this will be tied-in to discussions around school travel planning with staff and is aware that schools are planning to do something for Climate Week in late September.</p> <p><b>SMc</b> also recommends that Love to Ride talk to local bike shops and the Lanterne Rouge in Gifford regarding vouchers for prize draws.</p> <p><b>RK</b> confirms that promotion of Love to Ride and Cycle September will be in the September issue of Inform for East Lothian Council staff. A led ride will also take place for ELC staff on Friday 22<sup>nd</sup> September, which is Car Free Day, starting at Longniddry railway station and finishing at John Muir House. This will be shared alongside information on ELC's new Bicycle User Group for staff.</p> <p><b>DW</b> is keen to link Love to Ride in with the Musselburgh group that he currently volunteers as a Ride Leader for.</p> <p><b>PB</b> suggested adding a link to schools network landing page and <b>MC</b> pointed out potential for Active Schools Coordinators to support. <b>SMc</b> asked Love to Ride and <b>RK</b> to explore these options.</p> <p><b>PB</b> asked whether winter cycle training could become a feature in future for ELC staff.</p>	<p><b>RK</b></p>
<p>5.</p>	<p><b>Wallyford Toll improvements</b></p> <p><b>SL</b> provides an overview of the work that has been carried by AECOM to assess options at <a href="#">this location</a>. <b>SL</b> emphasises that this project is a work-in-progress and that images shown are not final and that further adjustments are being made as part of the detailed design process.</p> <ul style="list-style-type: none"> <li>• Key areas of focus are improving safety and joining future routes delivered through MAT and the East Lothian Active Freeway.</li> <li>• AECOM provided 4 initial design options for consideration, with Option 4 selected for further detailed design (see below). This decision was based on an assessment by AECOM which demonstrated that Option 4 would meet the needs of all users and offer a high degree of separation for people walking, cycling or wheeling.</li> </ul>  <p>Specific comments by <b>SL</b> on Option 4 were:</p> <ul style="list-style-type: none"> <li>• Hatching on the road space will be used to create further separation.</li> <li>• Crossing have been designed for each of the four junctions on the roundabout.</li> </ul>	

	<ul style="list-style-type: none"> <li>• Further improvements are being designed in, where possible, to improve visibility at junctions.</li> <li>• Shared-use segregation meets all Cycling by Design standards.</li> <li>• All pedestrian design objectives were achieved.</li> <li>• The needs of emergency services and bus operators are currently being assessed as part of the final design stages.</li> <li>• No date has been set for construction, which will be subject to funding being secured when final designs are completed.</li> </ul> <p><b>SMc</b> notes the importance of this project for the new Rosehill Campus. SL agreed and talked about this roundabout already being very well used by cyclists.</p> <p>It was hard to show clear detail via the presentation on MS Teams so <b>DW</b> queries the level of segregation that will be achieved. SL confirms that the orange sections represent bi-directional cycle paths. Segregation from road traffic will be achieved through the hatched areas and a raised kerb.</p> <p><b>DW</b> talks about the B1361 to Prestonpans and the increased pressure on that road from new housing but notes that there is no new cycle infrastructure towards Wallyford Toll. This route supports integration with bus and rail services as well as the proposed Active Freeway. SL confirms that the path will be widened along part of the B1361, to become shared use. DW emphasises again that this link is crucial and would ideally have been addressed by now.</p> <p><b>PB</b> asks why this was not put in at the same time as the new school campus and notes concern that short sections of segregation will slow journeys and increase collision risk. SL explains that there were significant constraints on the site and with those in mind this offers a very good solution.</p> <p><b>MJ</b> asks for clarity on the width of the bi-directional stretches. SL confirms that they will be 3m.</p> <p><b>SMc</b> asks whether any changes can be made to the high walls at junctions that affect visibility. SL confirms that this is highly unlikely as these are owned by network rail and designed to protect the east coast main line.</p> <p><b>JMc</b> comments that he was concerned about width but appreciates that constraints on this site and the purpose of features such as the walls. He stresses the importance of communication and asks that this forum is further consulted as designs are finalised.</p> <p><b>JMc</b> also notes that the B1361 to Prestonpans should be considered as part of Local Development Planning.</p>	SL
6.	<p><b>eCargo Bike update</b></p> <p><b>CM</b> provides a further update on this work. ELC have purchased three eCargo bikes and now have funding to purchase a further 3-4. These will be used to pilot a scheme across all 6 Area Partnerships, with the type of use in each case likely to vary based on local needs. In some cases, this may be long-term loan to organisations, while in others it could be a High Street focused shared-use scheme.</p> <p>The initial plan is for the bikes to be in operation from early next year, bearing in mind time required to procure new bikes, secure legal and insurance agreements and consult with local organisations. They will be available for use only by organisations during the early stages of this work. CM will keep the forum updated and has asked members to contact him if they would like more information or get involved in local discussions.</p> <p><b>JMc</b> notes that emerging charities and social enterprises are likely to be very interested in this and confirms that he will share details with CM.</p> <p><b>BW</b> talks about interest from businesses in North Berwick who are looking for solutions to move both waste and stock.</p> <p><b>SMc</b> asks if Portobello Community Energy have been contacted, as they are operating their own scheme. CM confirms that he has reached out to them.</p> <p><b>MJ</b> asks what models will be used. CM confirms that the three currently with ELC are all XYZ Cargo trikes. The remaining bikes will be procured after consulting with partners, including the Edinburgh Cargo Bike Movement. Members will be updated at a future meeting.</p>	JMc

## 7. Input to Climate Change Strategy

HL provides a brief overview of East Lothian's Climate Change Strategy, sharing the extract below:



HL further highlights relevant actions from Outcome 2 as they relate to East Lothian's Cycle Forum, as follows:

- 2.2c Working with partners, including the East Lothian Cycle Forum and Area Partnerships, to support and encourage community-initiated projects, including with funding and infrastructure.
- 2.2d Continue the promotion of active travel options in East Lothian, including via Area Partnerships, East Lothian Cycle Forum, East Lothian on The Move, Traveline, smart technology and mobile / digital technology.
- 2.2f Work with partners to improve cycling route connectivity and safety, particularly to connect rural communities to larger settlements and/or public transport hubs and connectivity to local amenities.

Forum members in attendance are split in to three breakout rooms and asked to consider the following questions against these three actions:

- Do these actions reflect the role and remit of the Cycle Forum?
- How do we know if we are succeeding? Is the wording right?
- Are we on track with these actions?
- Is anything missing?

15 minutes is allowed for breakout groups after which the following feedback is shared:

- It is important to identify who our partners are and need to be, considering whether a partnership charter is required.
- Very important for the forum to agree it's role, values and objectives.
- Is everyone on board who should be?
- A better gender balance is needed.
- The Forum does work well together in addressing key points but is not as focused as it could be on integration with public transport.
- Important to consider what is represented on the agenda at this forum, particularly the balance between major projects and wider aspirations.
- This Forum, along with others such as the Bus Forum and Local Access Forum, provide a key conduit to our communities. But can this Forum integrate with those other groups more?
- There is potential for this Forum to act as a community advisory body, informing Council decision making.
- An annual conference or get together would serve this forum well.
- The key focus of this Forum should be cycling as a mode of day-to-day transport for residents and businesses, as opposed to leisure or tourism.
- If we are to agree values and objectives, then framing future agenda items around those will ensure that we are on track and working towards our agreed aims.

8.	<p><b>Any other business</b></p> <p><b>PB</b> highlights that local Bikeability volunteer Douglas Kerrison won a Highly Commended Award at the Cycling Scotland Training and Infrastructure Conference in Stirling.</p> <p><b>MJ</b> provides a brief update on the Connecting Dunbar project, which has just launched an interactive map to allow people to help shape future active travel improvements in the area. This can be accessed <a href="#">here</a>.</p> <p><b>SMc</b> talks about an upcoming consultation event in Gullane for the Planning Aid Scotland (PAS) Sustaining Choices project being undertaken in the North Berwick area. <b>BW</b> confirms that match funding was recently approved for this by the local Area Partnership, with a very good turnout at the meeting and a very positive response. This work will develop an Active and Sustainable Travel Action Plan for the North Berwick Coastal Ward Area. The plan is being created by collecting the experiences and ideas of people who live and travel in the area throughout September and into October, through workshops and surveys. The next stage of consultation will be a workshop at Aberlady Community Hall, from 7-9pm on Monday 2<sup>nd</sup> October. Spaces can be booked on Eventbrite <a href="#">here</a>.</p> <p><b>RK</b> would like Love to Ride to link up with the East Lothian Climate Action Network (ELCAN). LS confirms that Love to Ride are already members.</p>	
9.	<p><b>Date of next meeting</b></p> <p>The next meeting will take place at John Muir House, Brewery Park, Haddington, 4.30-6.30pm on Thursday 30<sup>th</sup> November. All visitors should report to main reception.</p>	

[activetravel@eastlothian.gov.uk](mailto:activetravel@eastlothian.gov.uk)  
**Roads Helpline – 01875 824305**