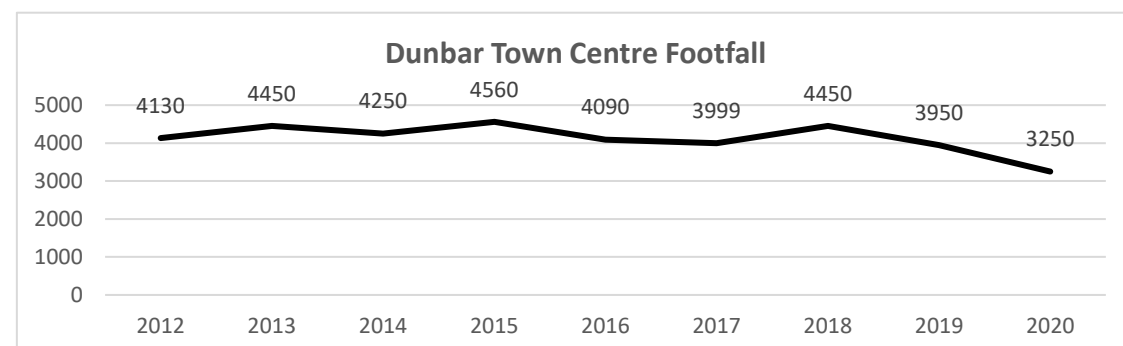


Neighbourhood and Place

- Pedestrian Market Research Services (PMRS) data showed that weekly town centre footfall in Dunbar town centre fell by 17.7% in 2020, lower than the 22.2% across all East Lothian's main towns.



The 2019 East Lothian Residents Survey reported that:

- All respondents in the Dunbar and East Linton ward rated their neighbourhood as a “very/fairly good” place to live.
- 21% of respondents in the ward felt that their neighbourhood had improved over the last 3 years, 77% felt it had stayed the same, and no-one thought it had got worse.
- Respondents in this ward were the most likely of all wards to feel that the council provided high quality services, did the best it could with money available, addressed key issues, was good at listening to local views, designed services around people’s needs, was good at letting people know about its services and performance, and that they could influence decisions.
- Respondents in this ward were also the most likely to look out for their neighbours.
- 21% felt that shopping facilities were a priority for improvement in their area (from a list of 17), higher than the 16% across East Lothian.

Travel and Transport

- In terms of the SIMD20 access domain, 6 data zones in the ward are in the 20% most access deprived in East Lothian, 4 data zones are in the 20% least deprived.
- In this ward 3,001 residents aged under 22 are eligible for the new free bus travel scheme.
- Plans have been approved for the return of rail services to East Linton.

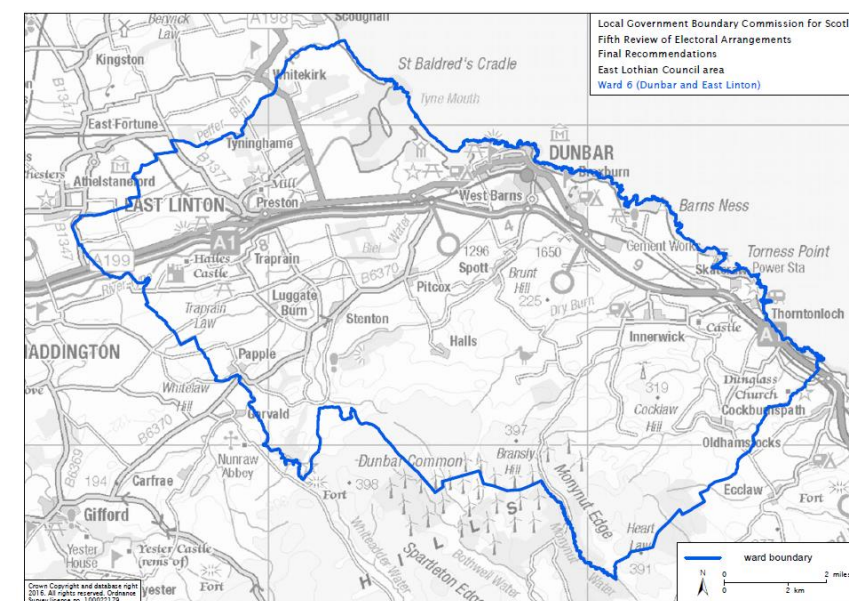
The 2019 East Lothian Residents Survey showed that:

- When asked about the issue that most needed improving in their area, 9% of respondents opted for public transport, slightly higher than the 8% for East Lothian as a whole.
- 65% of respondents were satisfied with the bus service, higher than the 60% across East Lothian.
- 8% of respondents felt that traffic congestion was a priority for improvement in their area, the lowest of any ward.
- 18% of respondents felt that road and pavement repairs were a priority for improvement in their area, lower than the 26% across East Lothian.

This snapshot is designed to give a quick statistical overview of one of the East Lothian Council ward and support the work of the East Lothian Partnership. It is one of six ward and three area partnership snapshots that have been produced to compliment the East Lothian Profile 2020 summary.

Dunbar & East Linton Ward by Numbers – Snapshot 2022

The Dunbar and East Linton Ward is one of East Lothian Council’s multi-member wards, stretching from East Linton in the west to Dunglass in the east.



Population

- The 2020 mid-year population estimates show that 15,257 people live in the Dunbar & East Linton ward, which accounts for 14.1% of the population of East Lothian.
- The 2018 based population projections show a 16.8% overall increase to 17,243 in 2028 in Dunbar, higher than the 7.2% for East Lothian.
- Proportionally more people aged 15 and under live in the ward than across East Lothian as a whole.
- NRS Population projections show that the working age population and those aged 15 and under will reduce as a percentage of the whole in both Dunbar and East Lothian, and 65 and over will increase.
- Education Service figures which take into account local policy such as housing developments, show a -4.9% decrease (2020 to 2028) for P1 to S6 pupils for the Dunbar school cluster.

% of population aged (NRS)	Dunbar		East Lothian	
	2018	2028	2018	2028
0 to 15	20.1%	17.7%	18.3%	16.8%
16 to 64	59.6%	58.5%	61.7%	59.5%
65 and over	20.3%	23.8%	20.0%	23.8%

Housing

- In 2020, 57.8% of households in this ward were classed as living in Remote Small Towns (settlements of between 3,000 and 10,000 people and within a drive time of over 30 minutes to a settlement of 10,000 or more), compared to 16.1% across East Lothian.
- In terms of the SIMD20 Housing domain, no data zones in this ward were within the 20% most deprived in East Lothian, 3 data zones were in the 20% least deprived.
- In 2019 there were 6,702 dwellings in the Dunbar & East Linton ward, equal to 13.7% of the total number of dwellings across East Lothian. The figure has shown a gradual annual increase from 13% in 2014.
- In 2019, 96.7% of this ward’s dwellings were occupied, compared to 97.1% across East Lothian.
- In 2020, the median sale price for houses sold in the ward was £260,000, higher than the East Lothian figure of £238,000.

Deprivation in the ward

The Scottish Index of Multiple Deprivation (SIMD) 2020 identifies concentrations of deprivation in East Lothian.

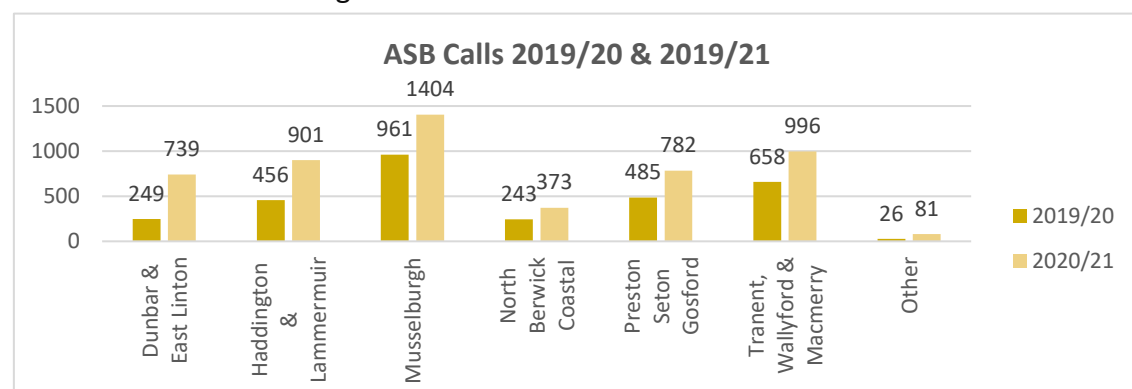
- None of the 17 data zones in the Dunbar and East Linton ward are within the 20% most deprived across East Lothian.
- The lowest ranked data zone is Harbour/Victoria St/Castle St, ranked 33rd out of 132 data zones in East Lothian, and 2,319 out of 6,976 in Scotland.
- 4 data zones in the Dunbar and East Linton ward are within the 20% least deprived across East Lothian and Scotland.

Income and Employment

- The SIMD20 shows that 7.9% of the population of this ward were classed as income deprived – lower than for East Lothian as a whole (10.2%). The proportion of the ward that are considered to be income deprived ranges from 2% to 15%.
- In Oct 2021, 1086 residents in this ward were on Universal Credit (UC), 50.4% higher than in February 2020, but lower than the 55.1% increase across East Lothian as a whole.
- 263 UC claimants in the ward were seeking work, 37% higher than in Feb 2020, compared to a 35.6% increase across East Lothian as a whole.
- The 2019 Residents survey showed that 69% of respondents in this ward said that they were “Managing very/quite well” financially, higher than the 54% across East Lothian. 3% of this ward had an annual household income of under £12,000 compared to 7% across East Lothian.
- In 2019, 12% of children in this ward were classed as living in relative low income families, and 10% in absolute low income families, compared to 16% and 13% for East Lothian respectively.
- The SIMD2020 shows that 6.5% of the working age population in the Dunbar and East Linton ward is considered to be employment deprived – lower than the 8.1% for East Lothian. The proportion of the ward that are considered to be employment deprived ranges from 1% to 12%.

Crime and Safety

- The 2019 East Lothian Residents survey showed that 99% of residents in this ward felt safe walking in their neighbourhood after dark.
- No data zones in the Dunbar & East Linton ward are within the 20% most deprived in East Lothian in terms of the SIMD20 crime domain.
- This ward, which accounts for 14.1% of East Lothian’s population generated 14.0% of East Lothian’s Anti Social Behaviour (ASB) calls in 2020/21.
- In this ward during 2020/21, ASB calls increased by 197% (249 to 739) the highest of any ward (East Lothian average increase 71.4%). A contributing factor to the increase was that calls relating to a breach of covid restrictions during lockdown were classed as ASB.



The Scottish Index of Multiple Deprivation (SIMD)

The SIMD is a tool used by the Scottish Government to identify concentrations of deprivation across Scotland in a consistent manner. It does this by dividing the country into 6,976 data zones (each averaging around 783 people).

These data zones are then ranked (with the lowest number indicating the most deprived area) against key measures of deprivation – income, education, crime, health, employment, geographic access and housing – as well as by overall deprivation.

It is important to note that the SIMD only identifies concentrations of deprivation. Therefore not all people who are deprived live in a data zone highlighted by the SIMD, and not all people living within an identified datazone are deprived.

There are 132 datazones in East Lothian and 17 data zones in the Dunbar and East Linton ward.

Health and Social Care

Across East Lothian, male and female life expectancies are higher than the Scottish average, although in general there has been a slow down in life expectancy growth since 2012-14.

Life Expectancy (Intermediate zones)	Dunbar East	Dunbar West	East Linton Rural	East Lothian	Scotland
Female	83	82.4	84.9	82.7	81.1
Male	79.1	77.9	79.6	79.1	77.2

- For males and females in the Dunbar & East Linton ward the average life expectancy is highest in East Linton rural.
- In terms of the SIMD20 health domain, 1 data zone in the ward is within the 20% most deprived in East Lothian, 4 data zones are in the 20% least deprived in East Lothian.
- In this ward, indicators of child and maternal health are generally positive compared to East Lothian as a whole.
- The 2019 East Lothian Residents Survey showed that 87% of respondents in the ward took moderate exercise, compared to 89% across East Lothian.
- The 2020 mid-year population estimates shows that there are 3,200 people aged 65 years and over living in this ward, which is 21% of the ward population. 1,348 of them or 8.8% of the total population are aged 75 or over. This is projected to increase to 23.8% and 11.0% respectively in 2028.

Education and Training

- In terms of the SIMD2020 Education Domain, 1 data zone in the Dunbar and East Linton ward is within the 20% most deprived in East Lothian, and 5 data zones are in the 20% least deprived.
- The 2017 East Lothian Residents survey showed that this ward had the smallest proportion (14%) of residents with no formal qualifications, and the highest proportion of group 2 qualifications.
- The Dunbar & East Linton Performance in Primary School (PIPS) On-Entry Baseline scores have historically been above the East Lothian average.
- In 2019/20 the pupil teacher ratio in Dunbar Grammar School was 12.6, compared to 13.0 for East Lothian as a whole. The pupil teacher ratio in Dunbar Primary School was higher than the East Lothian average, whilst East Linton, Innerwick and Stenton primary schools were had a lower ratio.
- In 2019/20 91% of Dunbar Grammar school pupils left school with 1 or more awards at SCQF level 5 or better, compared with 83% for East Lothian as a whole.
- In 2019/20, 94% of school leavers from Dunbar Grammar School were assessed as having achieved a positive destination, higher than the 92% across East Lothian.
- The 2019 East Lothian Residents Survey showed that 73% of the Dunbar and East Linton ward were satisfied with local schools, the highest of any of the East Lothian wards.

