

# East Lothian Community Hospital

September 2014

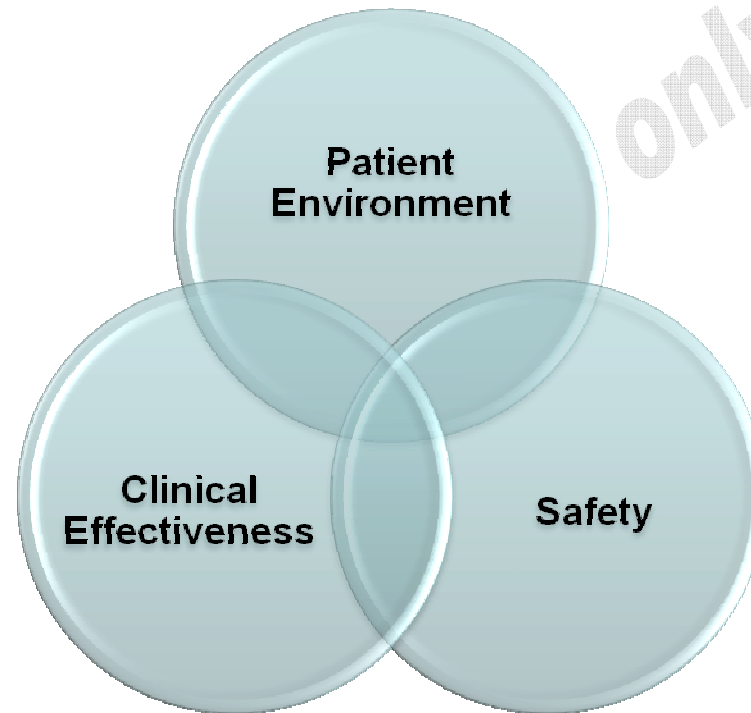
Information only

## Exploring Options for a new Community Hospital in East Lothian:

- NHS Lothian Strategic Plan
  - Unscheduled Care – Repatriation of post acute rehabilitation, freeing capacity
  - Scheduled Care – Day surgery, Endoscopy, Outpatients
  - Primary Care – GP premises
- Integration
  - Day Services
  - Co-location of joint teams
  - Reducing delayed discharges
- Quality and Safety
  - Direct re-provision to achieve modern standards i.e. single rooms, ensuite etc.

- Fit for purpose accommodation
- Single bedrooms
- Improved use of outdoor space
- Increased privacy and dignity

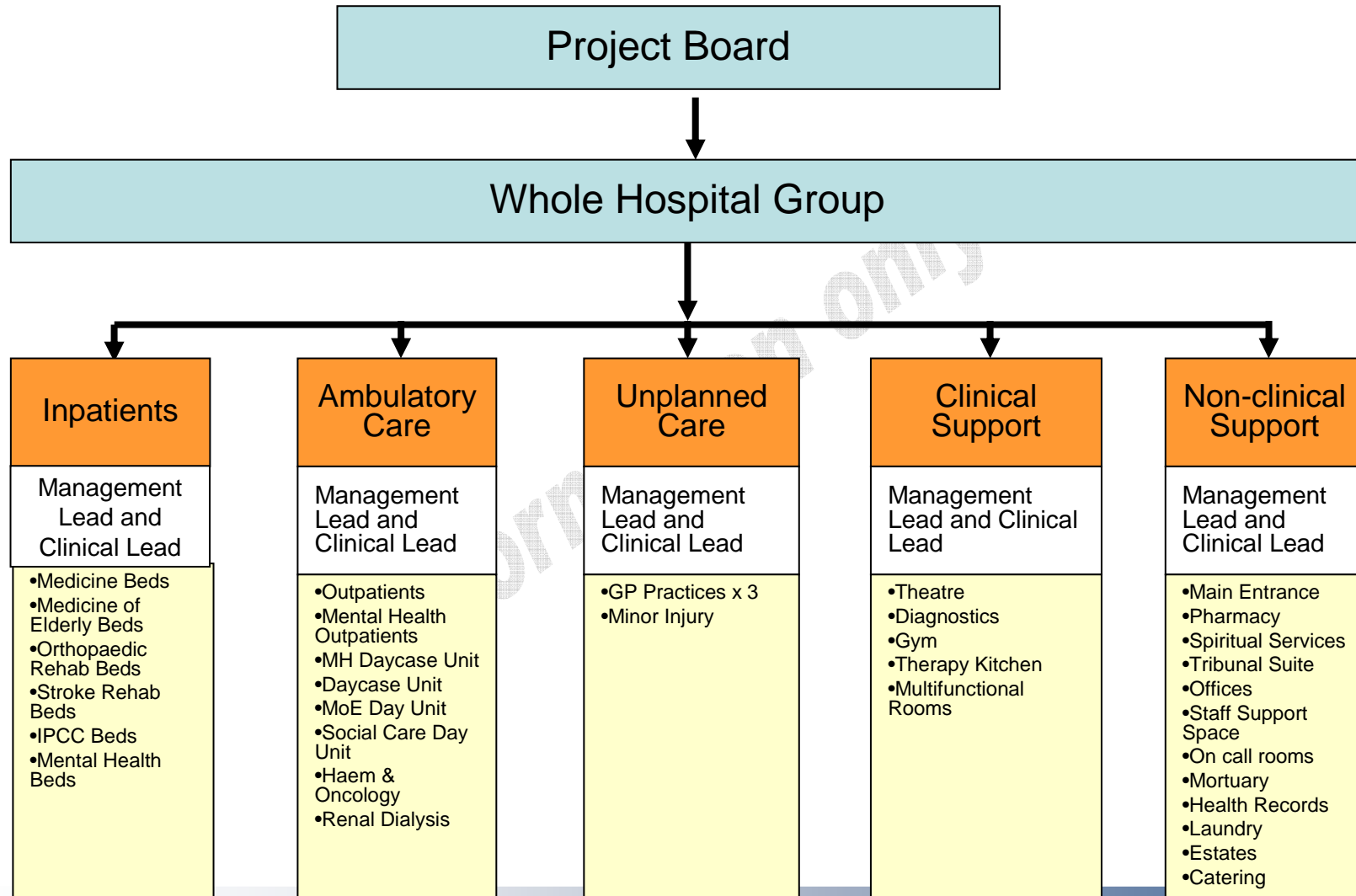
- Improved zoning of services
- Improved clinical adjacencies
- Increased opportunities for shared space
- Improved outcomes
- Closer to home



- Calming and therapeutic environment
- Reduced Infection
- Ground floor accommodation where appropriate
- Anti ligature fittings for MH
- Improved staff morale

- Capacity Planning / Project Scoping - Complete
- Clinical Brief - Complete
- Phasing Proposals – Ongoing
- Strategic Delivery Timescales – Based on 2017 Delivery
- Property/Asset Strategy – Ongoing
- Outline Business Case – April 2015

# Approach to Developing Service Scoping Groups



# Capacity Planning Conclusions

- **Conclusions:**
  - There is evidence for expanding services in ELCH to provide East Lothian residents with equity of access to services
  - The analysis work shows there to be sufficient volumes to justify the repatriation of activity from a service delivery perspective and potential expansion
- **Opportunities:**
  - Re-provide services as they currently exist to meet future demand projections
  - Repatriate services to release pressure on other NHSL sites
  - Delivering alternative models of care to avoid admission and reduce unnecessary stays in hospital

# Planning and Scoping

East Lothian Community Hospital – 29<sup>th</sup> April 2014

## Support Space

Entrance, Pharmacy, Spiritual Services, MH Tribunal Suite and Support Space

### CLINICAL SERVICES

#### GP Practices

3 x GP Practices

Carers of East Lothian & MacMillan

#### IPCC Beds

24 x beds

#### Planned Daycare

Outpatients dept (including intravenous treatment area)  
MH Day Unit – 20 x places  
Medicine of the Elderly (MoE) Day Unit – 16 x places  
SC Day Unit – 20 x places  
Theatre  
Day Surgery Unit - 14 x beds  
Diagnostics

#### Mental Health

Mental health outpatient dept & Mental Health 20 x beds

#### Sub Acute Beds

Med/MoE 64 x beds & Ortho/Stroke Rehabilitation x 24 beds

#### Shared Therapy

Inpatients  
Gym  
Therapy  
Kitchen  
Multi Func  
Rooms

Outpatients  
Gym  
Therapy  
Kitchen  
Multi Func  
Rooms

## Non Clinical Support

Offices, Meeting Rooms, Library, Staff Change, On-call rooms, Health Records, Laundry, Estates and Catering

# Existing Site





# Space Planning



**Indicative space planning exercise only, not to be taken as building form**

# Construction Challenges



**Indicative space planning exercise only, not to be taken as building form**

# Construction Zoning



**Indicative space planning exercise only, not to be taken as building form**

# Strategic Delivery Program

- Hub Appointment May-13
- Initial Agreement
  - Stage 1 – Capacity Review / Investigation Oct-13
  - Stage 2 – Project Scoping & Clinical Briefing Mar-14
  - Initial Agreement Approvals (F&R) July-14
- New Project Request (Phase One) Oct-14
- Outline Business Case & Stage 1 Design April-15
- Full Business Case & Stage 2 Design Dec-15
- Financial Close Feb-16
- Construction Commencement Mar-16
- Operational Availability – potential phase 1a (*indicative*) Dec -17

