

**REPORT TO:** Education Committee

**MEETING DATE:** 20 September 2016

**BY:** Depute Chief Executive (Resources and People Services)

**SUBJECT:** SQA Summary of Attainment 2016

---

## **1 PURPOSE**

- 1.1 To inform the Committee of overall pass rate levels in East Lothian in SQA Examinations 2015/16 and the level of attainment of secondary pupils in S5 and S6.

## **2 RECOMMENDATIONS**

- 2.1 The Committee is asked to:-
- i. Consider and note the contents of the report.
  - ii. Note the examination results continue to inform and guide actions in each of the six secondary schools' School Improvement Plans.

## **3 BACKGROUND**

- 3.1 Each year young people in secondary schools are presented for National Courses and Units certificated by the Scottish Qualifications Authority (SQA).
- 3.2 In 2015-16, pupils in East Lothian sat a mix of National Courses (National 2 to 5, Highers and Advanced Highers), Skills for Work and Personal Development Awards, National Progression Awards and National Certificates reflecting the wide range of awards and qualifications available on the Scottish Credit and Qualifications Framework (SCQF).
- 3.3 The attainment information in this report relates to the certificated entries and awards for National qualifications between 1 August 2015 and 30 June 2016 and are subject to change later in the year.
- 3.4 This report focuses on the overall pass rates in East Lothian for each qualification type, pass rates for Maths and English, and the performance

at SCQF levels 6 and 7 for S5 and S6 pupils using provisional breadth and depth measures from SEEMiS.

- 3.5 Pass rates have been calculated as a proportion of the entries, across all stages. National 2 to 4, Skills for Work and Personal Development courses are all ungraded and the attainment rate is based on entries which have resulted in a pass. National 5, Higher and Advanced Higher courses are graded and the pass rate is based on attainment of grade A to C.
- 3.6 Breadth and depth measures used in this report relate to the percentage of relevant stage attaining SQA accredited awards at grades A to C at SCQF Levels (Higher) or better by the end of S5 and S6, and SCQF Level 7 (Advanced Higher) by the end of S6. Percentages are based on cumulative awards, calculated as a percentage of the relevant S4 roll.
- 3.7 To aid Education Authorities with their reporting to stakeholders prior to the release of the attainment measures through the national benchmarking tool, 'Insight' at the end of September, SEEMiS have made available reports in their SEEMiS Vision Reporting system nationally to facilitate reporting on pass rates at SCQF Level and breadth and depth measures.
- 3.8 It is important to note though that the reports in SEEMiS are based purely on SQA attainment related to the results of completed National Courses and Skills for Work and Personal Development courses that are sent to SEEMiS from SQA in August. College presentations and courses certificated mid-session are not included. The breadth and depth reports also only include SQA accredited awards at Grades A-C for SCQF Levels 5 to 7 and do not include D awards or other achievements from ungraded National Certificates, National Progression Awards that may be included in the Insight measures at the end of September.
- 3.9 It is also important to note that presentations and attainment rates are heavily influenced by a school's curricular model (presentations policy), for example a reduction in the number of subjects studies in S4. Across our schools, pupils achieved a range of qualifications across the SCQF levels at different stages through a variety of progression pathways, for example, pupils "bypassing" National 5 qualifications in S4 to sit a two-year Higher course for examination in S5. The dual presentation of old and new qualifications across the SCQF Levels in previous academic sessions also make direct comparisons with previous years extremely complex both nationally and locally.
- 3.10 The main highlights from the 2016 SQA Exam Diet for East Lothian are provided in paragraphs 3.11 to 3.16 below. A detailed breakdown of the presentations, pass rates and breadth and depth measures is provided in Appendix 1.

## SQA Exam Diet 2016 Key Points

- 3.11 Pass rates overall in East Lothian in 2016 shows a slight drop on 2015, although individual school performance varies (see *appendix 1, section 2*).
- 3.12 Pass rates for each National Qualification Type have been maintained in 2016 or show an improvement on the previous year at most levels (see *appendix 1, section 3*):
- 100% of **National 2, 3 and 4** entries resulted in a pass;
  - 76.8% of **National 5** entries passed with an A-C award, a slight drop on last year's rate of 77.5% with 32.4% passing at Grade A (Band 1 or 2), a 0.8% improvement on the previous year;
  - **Higher** pass rates in 2016 in East Lothian are at the highest level since 2012 at 77.9%.
  - **Advanced Higher** pass rate dropped by 2.6% from 82.6% in 2015 to 80.0% in 2016. However, this has to be set against higher presentation levels and young people possibly achieving an award and unit awards at this level, which are not included in these figures.
- 3.13 There were marked improvements in the percentage of passes in Higher English (82.2%) and Higher Maths (76.4%), all above the 2016 national rates. The percentage of passes at Grade A in Higher English rose to 25.8%, the highest rate in five years in East Lothian. The percentage of passes at Grade A in Higher Maths also increased to its highest rate from 20.8% last year to 32.4% this year, an 11.7% improvement on the previous year.
- 3.14 The percentage of pupils gaining 1 or more, 3 or more, 5 or more Highers (SCQF Level 6) by end of S5 in 2016 has been maintained compared to 2015 (see *appendix 1, section 4*).
- 3.15 The percentage of pupils gaining 1 or more, 3 or more, 5 or more Highers (SCQF Level 6) by end of S6 in 2016 is at highest rate in 5 years (see *appendix 1, section 4*).
- 3.16 The percentage of S6 pupils gaining 1 or more Advanced Higher (SCQF Level 7) increased by 2.6% in 2016 to 21.7% again at its highest rate in 5 years and showing an overall improved trend in East Lothian since 2012 (see *appendix 1, section 4*).

## 4 POLICY IMPLICATIONS

- 4.1 There are no direct policy implications associated with this report.

## **5 INTEGRATED IMPACT ASSESSMENT**

- 5.1 The subject of this report does not affect the wellbeing of the community or have a significant impact on equality, the environment or economy.

## **6 RESOURCE IMPLICATIONS**

- 6.1 Financial - none  
6.2 Personnel - none  
6.3 Other - none

## **7 BACKGROUND PAPERS**

- 7.1 Appendix 1 – Summary of SQA Attainment in East Lothian August 2016.

<b>AUTHOR'S NAME</b>	Pauline Smith
<b>DESIGNATION</b>	Principal Officer
<b>CONTACT INFO</b>	Tel Number 01620 827957 E-mail <a href="mailto:psmith@eastlothian.gov.uk">psmith@eastlothian.gov.uk</a>
<b>DATE</b>	25 August 2016

## East Lothian Council - Education Service

## Summary of SQA Attainment in East Lothian – August 2016

*The information below is provisional as at 9<sup>th</sup> August 2016 and subject to change later in the year*

## 1. Overall SQA Presentation Levels (Entries) in East Lothian

Table 1 below shows the overall number of resulted presentations for SQA National Qualifications (old and new) across SCQF Levels 2 to 7 across all stages for each East Lothian secondary school between 2014 and 2016 and the percentage of pupils entered from each school. The presentation figures include ungraded National 2 to 5 courses, Skills for Work and Personal Development courses at SCQF Levels 2 to 6 and graded National 5, Higher and Advanced Higher courses. The percentage of pupils entered for SQA National Qualifications has been calculated as a proportion of the S4 to S6 rolls as at the September pupil census within each academic year.

Table 1: SQA Presentation Levels in East Lothian 2014 to 2016

Table 1 School	Number of Presentations				% of S4-S6 Pupils entered for SQA National Qualifications			
	2014	2015	2016	2016 change (+/-) on 2015	2014	2015	2016	2016 change (+/-) on 2015
Dunbar Grammar	1850	1963	1889	-74	105.3%	93.3%	97.9%	4.7%
Knox Academy	2040	1715	1652	-63	96.6%	91.4%	94.4%	2.9%
Musselburgh Grammar	2911	2833	2899	66	92.2%	94.0%	91.7%	-2.3%
North Berwick High	2402	2384	2003	-381	95.8%	96.6%	96.9%	0.3%
Preston Lodge High	1584	1455	1929	474	95.0%	92.2%	97.1%	4.8%
Ross High	2236	2054	1956	-98	91.5%	93.9%	88.6%	-5.3%
<b>East Lothian</b>	<b>13023</b>	<b>12404</b>	<b>12328</b>	<b>-76</b>	<b>95.6%</b>	<b>93.6%</b>	<b>94.2%</b>	<b>0.6%</b>

## Comments on Table 1:

- The total number of resulted presentations across East Lothian schools shows a drop of 76 entries from 12,404 in 2015 to 12,328 in 2016 while the % of pupils entered for SQA National Course Qualifications in 2016 has increased by 0.6%.
- At individual school level, the percentage of pupils entered for SQA qualifications in 2016 increased in four of the six schools.
- The change in number of entries from one year to the next is affected by changes in curricular models adopted in individual schools, for example a reduction in the number of subjects studied in S4 or pupils “bypassing” National 5 qualifications in S4 to sit a two-year Higher course for examination in S5. The total number of entries in each school is also affected by changes in the senior phase rolls from one academic session to the next.
- In particular, when considering presentations relative to the S4-S6 roll, a numeric drop in presentations from one year to the next may not indicate a drop in real terms. For example, while Knox Academy shows a numeric drop of 63 presentations in 2016 on the previous year, when this is considered relative to the S4-S6 roll, the presentations level in the school has increased slightly by 6 percentage points.

Note: There are currently 159 presentations that are still to be resulted as at the beginning of August, therefore the final number of resulted presentations for 2016 is subject to change later in the year.

## 2. Overall SQA Pass Rates in East Lothian

Table 2 below shows the pass rates for SQA National Qualifications (old and new) across SCQF Levels 2 to 7 for each East Lothian secondary school between 2014 and 2016. Pass rates in the SEEMiS Vision reporting system are calculated as a proportion of the resulted entries across all stages. Ungraded National 2 to 5, Skills for Work and Personal Development courses are based on entries which have resulted in a pass. For National 5, Higher and Advanced Higher courses, which are graded, the pass rate is based on Grade A to C attainment. A separate attainment rate has been calculated to include the Grade D awards for the graded courses. Note: These rates are subject to change following the next release of SQA data in November.

**Table 2: Attainment Rates 2014 to 2016 (all SQA National Qualifications at SCQF Levels 2 to 7)**

School	% Attainment Rates (excl. Grade D Awards)				% Attainment Rate (incl. Grade D Awards)			
	2014	2015	2016	2016 change (+/-) on 2015	2014	2015	2016	2016 % change (+/-) on 2015
Dunbar Grammar	83.8%	81.9%	81.9%	0.0%	90.0%	88.6%	87.9%	-0.7%
Knox Academy	78.9%	80.1%	82.6%	2.5%	85.5%	87.1%	90.6%	3.5%
Musselburgh Grammar	81.0%	83.5%	82.7%	-0.9%	88.0%	89.8%	88.7%	-1.1%
North Berwick High	86.5%	86.1%	87.4%	1.4%	91.5%	92.8%	92.3%	-0.6%
Preston Lodge High	76.8%	81.7%	81.6%	-0.1%	82.9%	87.9%	87.7%	-0.2%
Ross High	78.0%	82.6%	79.3%	-3.3%	85.2%	88.5%	86.0%	-2.4%
<b>East Lothian</b>	<b>81.0%</b>	<b>82.9%</b>	<b>82.6%</b>	<b>-0.3%</b>	<b>87.4%</b>	<b>89.4%</b>	<b>88.8%</b>	<b>-0.6%</b>

### Comments on Table 2:

- Overall the pass rate for all SQA entries in East Lothian schools in 2016 shows a slight drop of 0.3% on the previous year. At individual school level, three of the schools have maintained or increased their total pass rate in 2016.
- The Attainment rate including D awards at National 5, Higher and Advanced Higher also shows a slight drop of 0.6% on the previous year. At individual school level, the rate has dropped slightly across the schools with the exception of Knox Academy.

## 3. SQA Presentations (Entries) and Pass Rates by National Qualification Type

Tables 3 to 9 below and overleaf illustrate the changes in presentations and pass rates by National Qualification Type between 2014 and 2016 across East Lothian. Tables 3 to 5 provide a school-level breakdown. However due to the smaller numbers of pupils presented for National 2 and National 3 courses in individual schools, this data is only displayed at authority level.

**Table 3: Number of Resulted Presentations at National 2 to 3**

National Qualification Type	Number of Presentations		
	2014	2015	2016
National 2	3	3	6
National 3	288	235	269

Table 4../

**Table 4: Presentation Levels at SCQF Level 4 - National 4 & Skills for Work (SfW) courses**

School	Number of Presentations				% of S4-S6 Pupils entered for National 4 and SCQF Level 4 SfW courses			
	2014*	2015*	2016	2016 change (+/-) on 2015	2014*	2015*	2016	2016 % change (+/-) on 2015
Dunbar Grammar	397	356	243	-113	28.2%	36.8%	31.5%	-5.3%
Knox Academy	309	227	174	-53	29.9%	27.5%	28.5%	0.9%
Musselburgh Grammar	557	826	911	85	29.0%	47.4%	54.9%	7.5%
North Berwick High	337	333	195	-138	22.0%	27.6%	20.8%	-6.8%
Preston Lodge High	283	288	668	380	34.7%	37.7%	65.8%	28.1%
Ross High	576	549	397	-152	37.9%	55.1%	45.6%	-9.4%
<b>East Lothian</b>	<b>2459</b>	<b>2579</b>	<b>2588</b>	<b>9</b>	<b>30.2%</b>	<b>38.9%</b>	<b>42.1%</b>	<b>3.2%</b>

*\*Excludes presentations for Intermediate 1 qualifications in these years*

**Comments on tables 3 and 4 above:**

- The number of presentations for both National 3 and National 4 shows an overall increase in 2016 on the previous year.
- The number of pupils entered for National 4s as a % of S4 to S6 rolls also shows an increase.
- When considering the number of presentations relative to the S4-S6 pupil roll in each school, presentation levels for National 4 increased in real terms between 2015 and 2016 at Musselburgh Grammar and Preston Lodge High schools while they decreased in the remaining 4 schools.
- 100% of National 2, 3 and 4 entries resulted in a pass in each year between 2014 and 2016.

**Table 5: Presentation Levels at SCQF Level 5 (National 5 inc Skills for Work Courses)**

School	Number of Presentations				% of S4-S6 Pupils entered for SCQF Level 5 courses			
	2014	2015	2016	2016 change (+/-) on 2015	2014	2015	2016	2016 % change (+/-) on 2015
Dunbar Grammar	728	1040	915	-125	37.8%	59.6%	60.2%	0.6%
Knox Academy	783	802	878	76	43.6%	52.4%	62.8%	10.4%
Musselburgh Grammar	892	1126	1178	52	33.3%	60.1%	59.5%	-0.5%
North Berwick High	965	1180	916	-264	33.1%	55.6%	53.3%	-2.3%
Preston Lodge High	607	515	693	178	59.5%	63.7%	73.0%	9.3%
Ross High	856	920	881	-39	48.1%	69.1%	64.7%	-4.4%
<b>East Lothian</b>	<b>4831</b>	<b>5583</b>	<b>5461</b>	<b>-122</b>	<b>42.4%</b>	<b>60.1%</b>	<b>62.2%</b>	<b>2.1%</b>

**Comments on Table 5:**

- The number of resulted presentations at National 5 shows an overall drop of 122 entries in 2016 on the previous year.
- The number of pupils entered for National 5s as a percentage of the S4 to S6 rolls shows an overall increase of 2.1%.
- When considering the number of presentations relative to the S4-S6 pupil roll in each school, presentation levels for National 5 have dropped from 2015 to 2016 overall across East Lothian and

in Dunbar Grammar, North Berwick High and Ross High Schools. The change in number of entries are likely to have been the result of recent changes in curricular models adopted in these schools, for example a reduction in the number of subjects studied in S4?

**Table 6: Attainment Rates at SCQF Level 5 (National 5 inc Skills for Work Courses)**

School	% Attainment Rate (Grades A to C & SfW Passes)				% Attainment Rate (Grades A to D & SfW Passes)			
	2014	2015	2016	2016 change (+/-) on 2015	2014	2015	2016	2016 change (+/-) on 2015
Dunbar Grammar	81.3%	78.2%	80.1%	1.9%	87.6%	86.0%	85.8%	-0.2%
Knox Academy	76.3%	75.8%	80.3%	4.5%	83.8%	83.4%	88.3%	4.9%
Musselburgh Grammar	76.6%	72.9%	72.9%	0.0%	84.5%	82.8%	82.2%	-0.6%
North Berwick High	87.1%	84.3%	86.5%	2.1%	92.3%	92.1%	91.9%	-0.2%
Preston Lodge High	69.4%	78.6%	67.2%	-11.4%	75.8%	85.2%	76.3%	-8.9%
Ross High	72.7%	74.6%	72.3%	-2.3%	80.6%	82.0%	80.8%	-1.1%
<b>East Lothian</b>	<b>77.7%</b>	<b>77.5%</b>	<b>76.8%</b>	<b>-0.8%</b>	<b>84.6%</b>	<b>85.5%</b>	<b>84.4%</b>	<b>-1.1%</b>

**Comments on Table 6:**

- The overall percentage pass rates at A-C for National 5 entries in East Lothian in 2016 shows a slight drop of 0.8% on last year's rate.
- At individual school level, four of the six schools maintained or improved their pass rate in 2016 with the most notable improvement at Knox Academy (+4.5%). While Preston Lodge High School shows a drop of 11.4% on the previous year, this is set against an increase in presentations and the % of pupils entered for National 5s at the school in 2016 possibly achieving unit awards at this level, which are not included in these figures.
- *Note: the smaller number of presentations for National 5s at Preston Lodge High School, as a result of the two-year higher courses, may cause greater fluctuations in the attainment rate and presentation levels year on year than for other schools.*

**Table 7: Presentation Levels at SCQF Level 6 (Higher inc Skills for Work Courses)**

School	Number of Presentations				% of S5/S6 Pupils entered for SCQF Level 6 courses			
	2014	2015	2016	2016 change (+/-) on 2015	2014	2015	2016	2016 change (+/-) on 2015
Dunbar Grammar	438	523	650	127	71.1%	77.4%	85.9%	8.5%
Knox Academy	616	550	504	-46	80.1%	70.8%	79.2%	8.4%
Musselburgh Grammar	683	722	634	-88	67.0%	79.3%	70.7%	-8.7%
North Berwick High	744	722	759	37	78.7%	81.8%	83.1%	1.2%
Preston Lodge High	514	519	475	-44	70.4%	75.8%	72.6%	-3.1%
Ross High	405	499	521	22	72.8%	77.9%	72.7%	-5.2%
<b>East Lothian</b>	<b>3400</b>	<b>3535</b>	<b>3543</b>	<b>8</b>	<b>73.1%</b>	<b>77.2%</b>	<b>77.2%</b>	<b>0%</b>

**Comments on Table 7:**

- The number of resulted presentations at Higher shows a very slight increase in 2016 on the previous year while the % of S5/S6 pupils entered for Highers has been maintained.



- When considering the number of Higher presentations relative to the S5-S6 pupil roll in each school, presentation levels for Higher increased in 2016 on the previous year in real terms at Dunbar Grammar, Knox Academy and North Berwick High School and decreased in the three remaining schools.

**Table 8: : Attainment Rates Rates at SCQF Level 6 (Higher inc Skills for Work Courses)**

School	% Attainment Rate (Grades A to C & SfW Passes)				% Attainment Rate (Grades A to D & SfW Passes)			
	2014	2015	2016	2016 change (+/-) on 2015	2014	2015	2016	2016 change (+/-) on 2015
Dunbar Grammar	79.0%	76.5%	77.2%	0.7%	90.4%	85.5%	86.0%	0.5%
Knox Academy	72.7%	75.8%	79.0%	3.2%	81.3%	85.6%	89.7%	4.0%
Musselburgh Grammar	72.2%	78.7%	74.5%	-4.2%	83.9%	87.3%	83.8%	-3.5%
North Berwick High	82.0%	81.9%	84.2%	2.3%	88.6%	90.6%	90.0%	-0.6%
Preston Lodge High	70.0%	74.0%	74.5%	0.5%	79.8%	84.0%	85.7%	1.7%
Ross High	61.7%	76.6%	75.6%	-0.9%	75.8%	86.6%	84.8%	-1.7%
<b>East Lothian</b>	<b>73.7%</b>	<b>77.6%</b>	<b>77.9%</b>	<b>0.3%</b>	<b>83.7%</b>	<b>86.9%</b>	<b>86.8%</b>	<b>-0.1%</b>

- The overall percentage pass rates at A-C for Higher entries in East Lothian in 2016 shows a slight drop of 0.3% on last year's rate and are at their highest level since 2012.
- At individual school level, four of the six schools improved their pass rate in 2016 with the most notable improvement at Knox Academy (+3.2%). Musselburgh Grammar and Ross High School show a drop in 2016, following a high performance in 2015 but remain higher nonetheless in comparison to the performance in 2014.

**Table 9: Presentation Levels at SCQF Level 7 (Advanced Higher)**

School	Number of Presentations				% of S5/S6 Pupils entered for SCQF Level 7 courses			
	2014	2015	2016	2016 change (+/-) on 2015	2014	2015	2016	2016 change (+/-) on 2015
Dunbar Grammar	54	36	57	21	36.0%	28.1%	34.6%	6.5%
Knox Academy	74	111	75	-36	46.3%	48.4%	42.9%	-5.5%
Musselburgh Grammar	65	52	82	30	26.6%	26.3%	41.0%	14.7%
North Berwick High	111	116	127	11	44.2%	48.1%	48.8%	0.8%
Preston Lodge High	79	61	38	-23	41.1%	35.0%	29.6%	-5.4%
Ross High	59	15	82	67	38.9%	15.1%	54.4%	39.3%
<b>East Lothian</b>	<b>442</b>	<b>391</b>	<b>461</b>	<b>70</b>	<b>38.4%</b>	<b>35.1%</b>	<b>41.8%</b>	<b>6.7%</b>

**Comments on Table 9:**

- The number of resulted presentations at Advanced Higher shows an overall increase of 70 entries in 2016 on the previous year. The increase in presentations shown above for the four schools is also reflected when considering the number of presentations relative to the S6 roll.
- The percentage of S5/S6 pupils entered for Advanced Highers also shows an increase overall, with the most notable increases at school level in Musselburgh Grammar and Ross High School.

**Table 10.../**

**Table 10: Attainment Rates at SCQF Level 7 (Advanced Higher)**

School	% Attainment Rate (Grades A to C)				% Attainment Rate (Grades A to D)			
	2014	2015	2016	2016 change (+/-) on 2015	2014	2015	2016	2016 change (+/-) on 2015
Dunbar Grammar	77.8%	86.1%	79.0%	-7.2%	81.5%	94.4%	87.7%	-6.7%
Knox Academy	85.1%	86.5%	88.0%	1.5%	86.5%	91.9%	98.7%	6.8%
Musselburgh Grammar	75.4%	86.5%	73.2%	-13.4%	83.1%	96.2%	81.7%	-14.4%
North Berwick High	88.3%	87.9%	93.7%	5.8%	93.7%	93.1%	86.1%	-7.0%
Preston Lodge High	77.2%	65.6%	81.6%	16.0%	84.8%	72.1%	84.2%	12.1%
Ross High	67.8%	60.0%	58.5%	-1.5%	84.8%	73.3%	69.5%	-3.8%
<b>East Lothian</b>	<b>79.9%</b>	<b>82.6%</b>	<b>80.0%</b>	<b>-2.6%</b>	<b>86.7%</b>	<b>89.3%</b>	<b>87.2%</b>	<b>-2.1%</b>

**Comments on Table 10:**

- The overall percentage pass rates at A-C for Advanced Higher entries in East Lothian in 2016 shows a drop of 2.6% on last year’s rate. However, this has to be set against higher presentation levels and young people possibly achieving unit awards at this level, which are not included in these figures.
- At individual school level, three of the six schools improved their pass rate in 2016 with the most notable improvements at Preston Lodge High School (+16%) and North Berwick High School (+5.8%). The drop in A-C pass rates at Dunbar Grammar School and Musselburgh Grammar School in 2016 follows a particularly high rate in 2015 and at Ross High School and Musselburgh Grammar School also has to be set against an increase in presentation levels, which resulted in improvements in the Breadth and Depth measure for 2016.

**4. Breadth and Depth Measures – Comparison of S5 and S6 attainment with previous years**

This summary report reviews the performance of attainment at SCQF level 6 (Higher) and SCQF level 7 (Advanced Higher) using breadth and depth measures for S5 and S6 pupils. For the purposes of comparison over time, the Education Services’ Education MIS team has used data from the SEEMIS Vision Reporting system to report on breadth and depth measures over the last five years and shows the percentage of each relevant stage attaining SQA accredited awards at grades A-C at SCQF Level 6 or better and SCQF Level 7 respectively.

The breadth & depth percentages in SEEMiS are based on A-C awards of SQA Accredited National Courses only for S4 to S6 students. They include only the results of completed National Courses and Skills for Work and Personal Development courses that are sent to SEEMiS from SQA in August. They do not include D awards or college presentations and courses certificated mid-session that may be included in the Insight measures at the end of September. Breadth and Depth Percentages are based on cumulative awards and calculated using the S4 cohort value (as at census) associated with each year group. No national or comparator data is available at this time for breadth and depth data.

As with the presentations data, breadth and depth data is heavily influenced by a school’s curricular model, therefore, given the mix of old and new qualifications in previous years, changes to the curricular models in schools and the variety of progression pathways that candidates would have undertaken for the Higher qualifications, the 2016 results may not be fully comparable with previous years.

Figures 1 to 7 that follow show the attainment by the end of S5 and S6 for the following breadth and depth measures:

- 1 or more, 3 or more, and 5 or more awards at SCQF Level 6 (Higher) or better by the end of S5; and
- 1 or more, 3 or more, and 5 or more awards at SCQF Level 6 (Higher) or better and 1 or more awards at SCQF Level 7 (Advanced Higher) or better by the end of S6

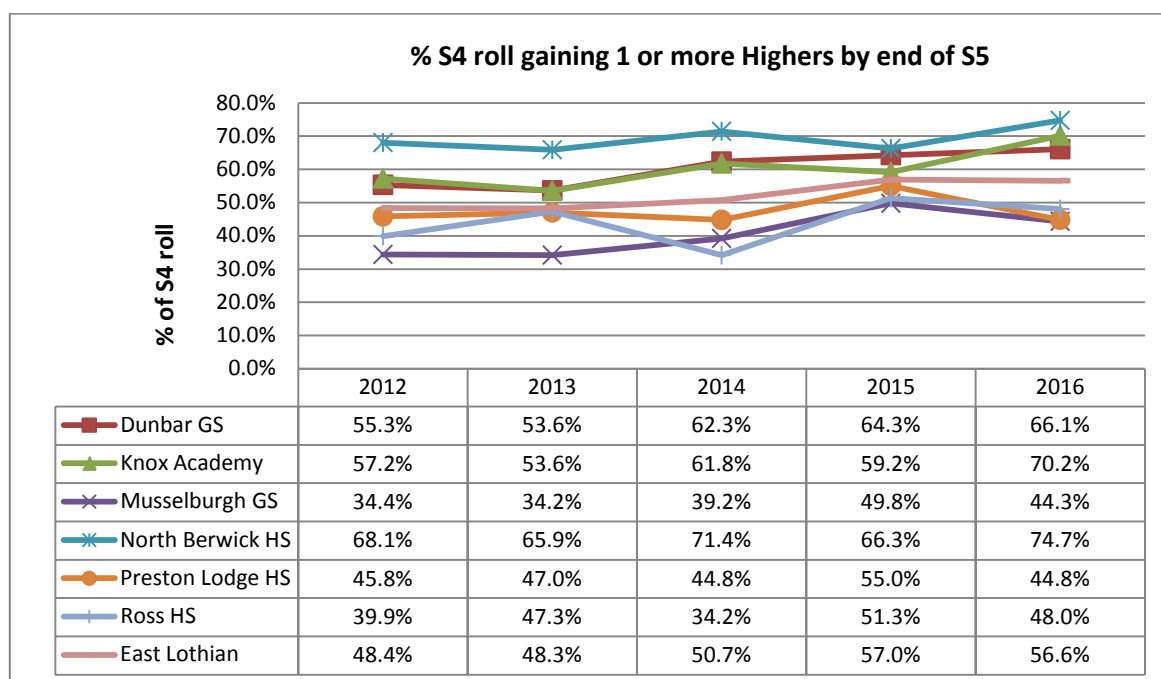
*Note: These percentages are subject to change following the next release of SQA data in November.*

### SQA Attainment – S5 Pupils

Overall, the percentage of pupils gaining 1 or more, 3 or more, 5 or more Highers (SCQF Level 6) by end of S5 in 2016 has been maintained compared to 2015. Over a five-year period, East Lothian shows an improved trend in the percentage of S5 pupils gaining awards at SCQF Level 6 (Higher) or better.

Figure 1 and Figures 2 to 3 show the performance by each secondary school broken down for each breadth & depth measure by the end of S5.

**Figure 1: 1 or more awards at SCQF Level 6 (Higher) or better by the end of S5**

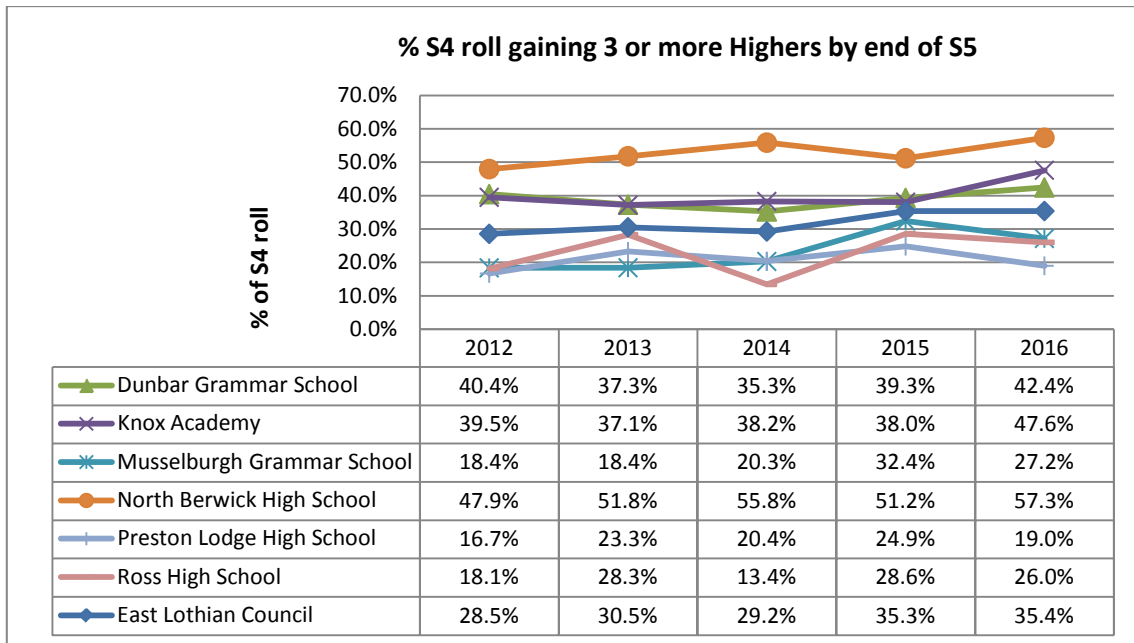


#### Comments on Figure 1:

- Figure 1 shows that East Lothian’s performance in 2016 for the ‘1 or more awards at Higher’ measure dropped slightly by 0.4% on the previous year as East Lothian’s second highest performance to date and shows an eight percentage point improvement over the five-year period.
- Individual school performance in 2016 varied more with two out of the six schools (Knox Academy and North Berwick High School) showing significant improvements of between 8% and 11%. Dunbar Grammar School also made further improvements on the previous year. Musselburgh Grammar and Ross High School’s performance dropped by 5.4% and 3.3% respectively following a particularly high performance in 2015 but still achieved their second highest level of performance nonetheless.
- Five out of the six schools show an overall improved trend over the five-year period with Preston Lodge High School showing a slight drop due to this year’s performance.

Figure 2.../

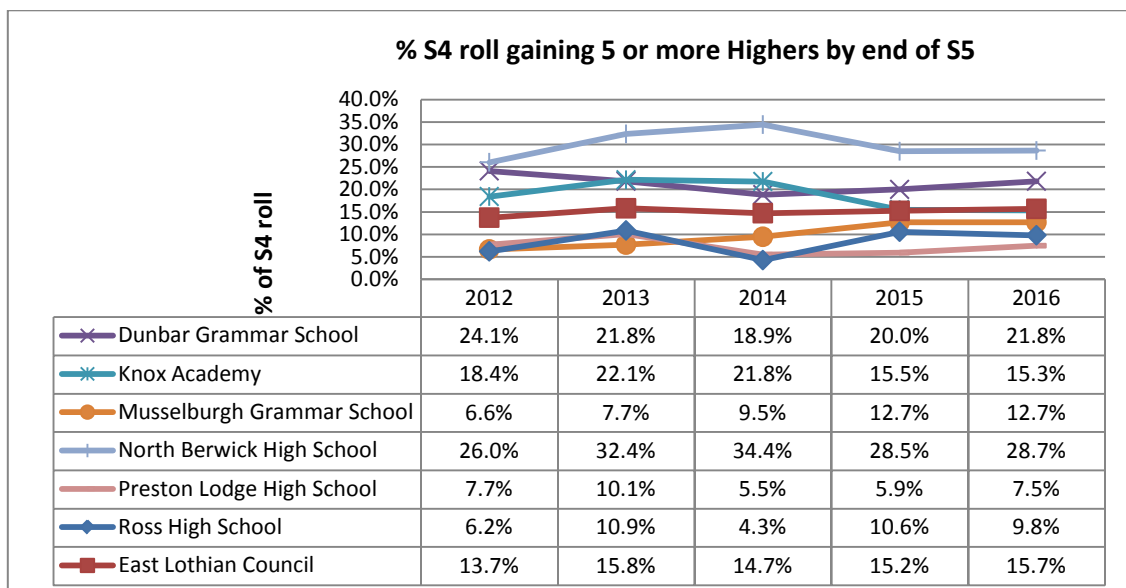
Figure 2: 3 or more awards at SCQF Level 6 (Higher) or better by the end of S5



**Comments on Figure 2:**

- Figure 2 shows a seven percentage point improvement since 2012 overall in East Lothian with the performance in 2016 for the '3 or more awards at Higher' measure showing a further increase of 0.1% on the previous year as East Lothian's highest performance to date.
- Again, at individual school level, the performance in 2016 varied more with three out of the six schools (Dunbar Grammar School, Knox Academy and North Berwick High School) showing improvements of between 3% and 10% on the previous year to their highest performance to date. Musselburgh Grammar School's performance dropped in 2016 following a particularly high performance in 2015 but again still achieved their second highest level of performance nonetheless.
- All six schools show an overall improved trend over the five-year period.

Figure 3: 5 or more awards at SCQF Level 6 (Higher) or better by the end of S5



### Comments on Figure 3:

- Figure 3 shows a slight increase of 0.5% across East Lothian in 2016 on the previous year for the ‘5 or more awards at Higher’ measure and a two percentage point improvement overall since 2012.
- Individual school performance in 2016 is broadly in line with the previous year, with Dunbar Grammar, North Berwick High and Preston Lodge High schools showing a slight increase and Knox Academy and Ross High School showing a slight drop on 2015.
- Musselburgh Grammar School, North Berwick High School and Ross High School show an improved trend over the five-year period with the most notable improvement at Musselburgh Grammar School.

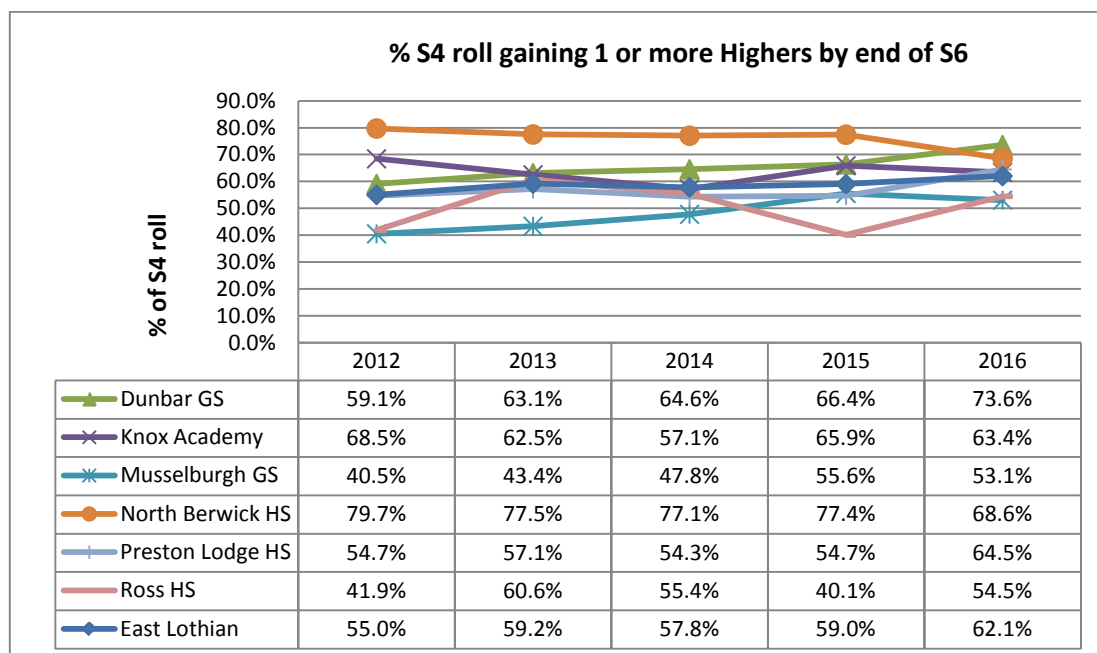
### SQA Attainment - S6 Pupils

The percentage of pupils gaining 1 or more, 3 or more and 5 or more Highers (SCQF Level 6) by end of S6 in 2016 is at highest rate in 5 years and shows an improved trend overall in East Lothian since 2012.

At SCQF Level 7 (Advanced Higher), the percentage of S6 pupils gaining 1 or more awards is at its highest rate in 5 years and shows an overall improved trend in East Lothian since 2012.

Figures 4 to 6 below show the performance by each secondary school broken down for each breadth & depth measure at SCQF Level 6 by the end of S6.

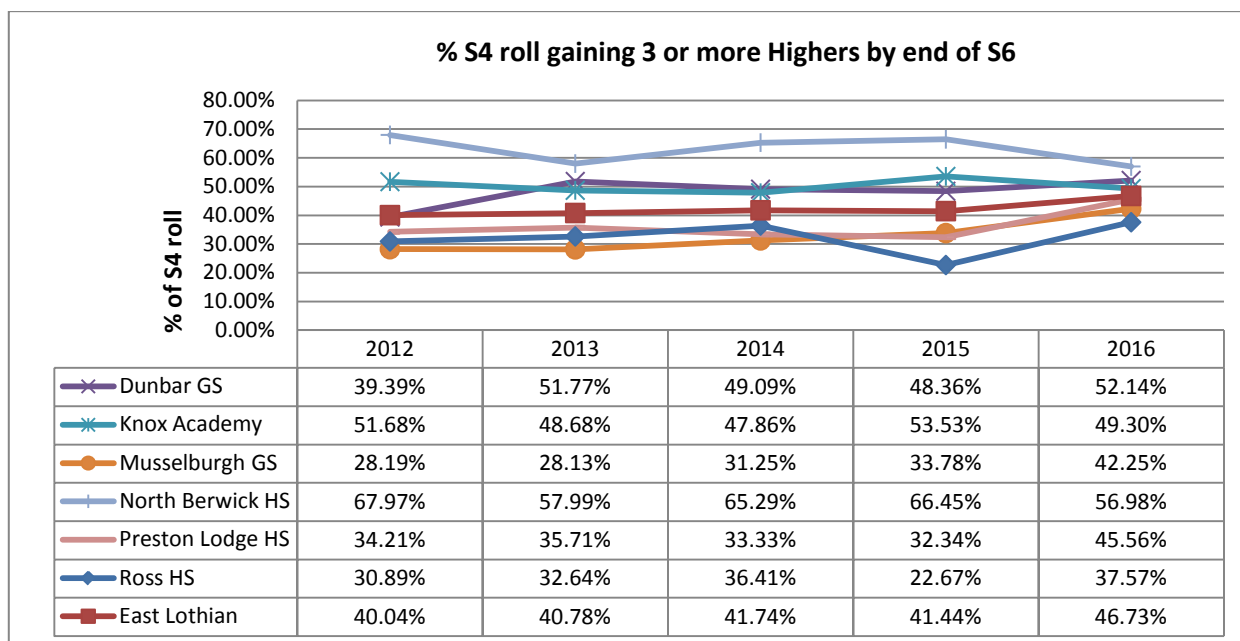
**Figure 4: 1 or more awards at SCQF Level 6 (Higher) or better by the end of S6**



### Comments on Figure 4:

- Figure 4 shows that East Lothian’s performance in 2016 for the ‘1 or more awards at Higher’ measure dropped slightly by 3.1% on the previous year as East Lothian’s highest performance to date and shows a seven percentage point improvement since 2012.
- Individual school performance in 2016 varied more with three out of the six schools (Dunbar Grammar, Preston Lodge High and Ross High School) showing significant improvements of between 7% and 14%. Musselburgh Grammar school’s performance dropped by 2.5% following a particularly high performance in 2015 but still achieved their second highest level of performance nonetheless.
- Four out of the six schools show an overall improved trend over the five-year period.

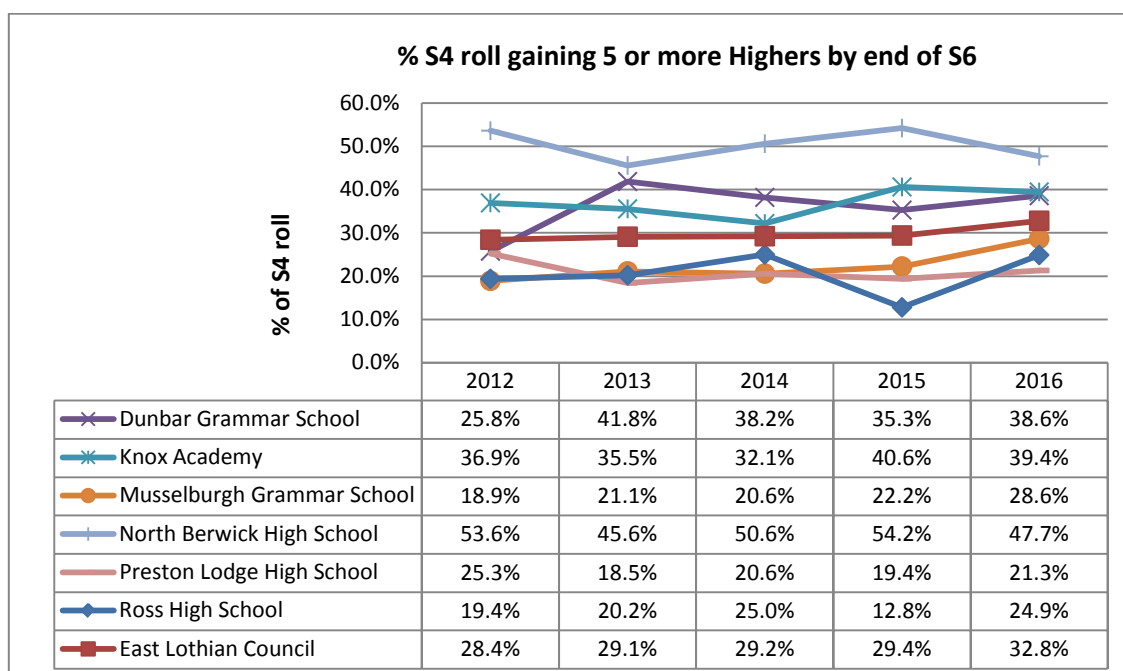
Figure 5: 3 or more awards at SCQF Level 6 (Higher) or better by the end of S6



**Comments on Figure 5:**

- Figure 5 shows a seven percentage point improvement since 2012 overall in East Lothian with the performance in 2016 for the '3 or more awards at Higher' measure showing an increase of 5.3% on the previous year as East Lothian's highest performance over the five-year period.
- Again, at individual school level, the performance in 2016 varied more with four out of the six schools showing improvements of between 3% and 15% on the previous year to their highest performance to date.
- Four out of the six schools show an overall improved trend over the five-year period with the most notable improvements at Dunbar Grammar, Musselburgh Grammar and Preston Lodge High schools.

Figure 6: 5 or more awards at SCQF Level 6 (Higher) or better by the end of S6

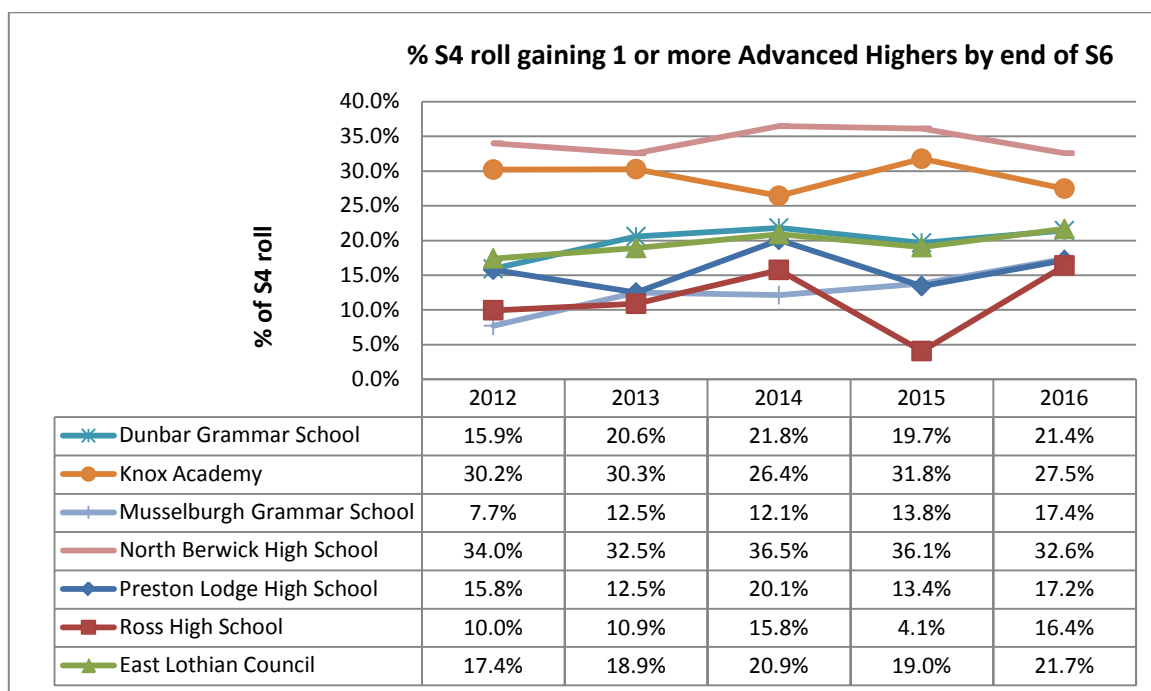


### Comments on Figure 6:

- Figure 6 shows an increase of 3.4% across East Lothian in 2016 on the previous year for the ‘5 or more awards at Higher’ measure and a four percentage point improvement overall since 2012.
- Individual school performance in 2016 again is varied with four schools showing an increase of between 2% and 12% on the previous year and two showing a drop of between 1% and 7%.
- Four of the schools show an improved trend over the five-year period with the most notable improvements since 2012 at Dunbar Grammar and Musselburgh Grammar schools.

Figure 7 below shows the performance by each secondary school broken down for each breadth & depth measure at SCQF Level 7 by the end of S6.

**Figure 7: 1 or more awards at SCQF Level 7 (Advanced Higher) by the end of S6**



### Comments on Figure 7:

- Figure 7 shows that East Lothian’s performance in 2016 increased by 2.7% on the previous year to its highest performance over the five-year period and shows an overall improved trend since 2012.
- At individual school level, the 2016 performance varied more with four out of the six schools increasing their percentage performance on the previous year. The most notable increases were in Ross High School (+12.3%), following a particularly low performance in 2015, and at Musselburgh Grammar (+3.6%) and Preston Lodge High (+3.7%), attaining their highest performance over the five-year period.
- Four out of the six schools show an overall improved trend over the five-year period.