

Members' Library Service Request Form

Date of Document	03/03/22
Originator	Ian Lennox
Originator's Ref (if any)	
Document Title	New Reduced Speed Limits Map - North Berwick Coastal Area

Please indicate if access to the document is to be “unrestricted” or “restricted”, with regard to the terms of the Local Government (Access to Information) Act 1985.

Unrestricted	<input checked="" type="checkbox"/>	Restricted	<input type="checkbox"/>
--------------	-------------------------------------	------------	--------------------------

If the document is “restricted”, please state on what grounds (click on grey area for drop-down menu):

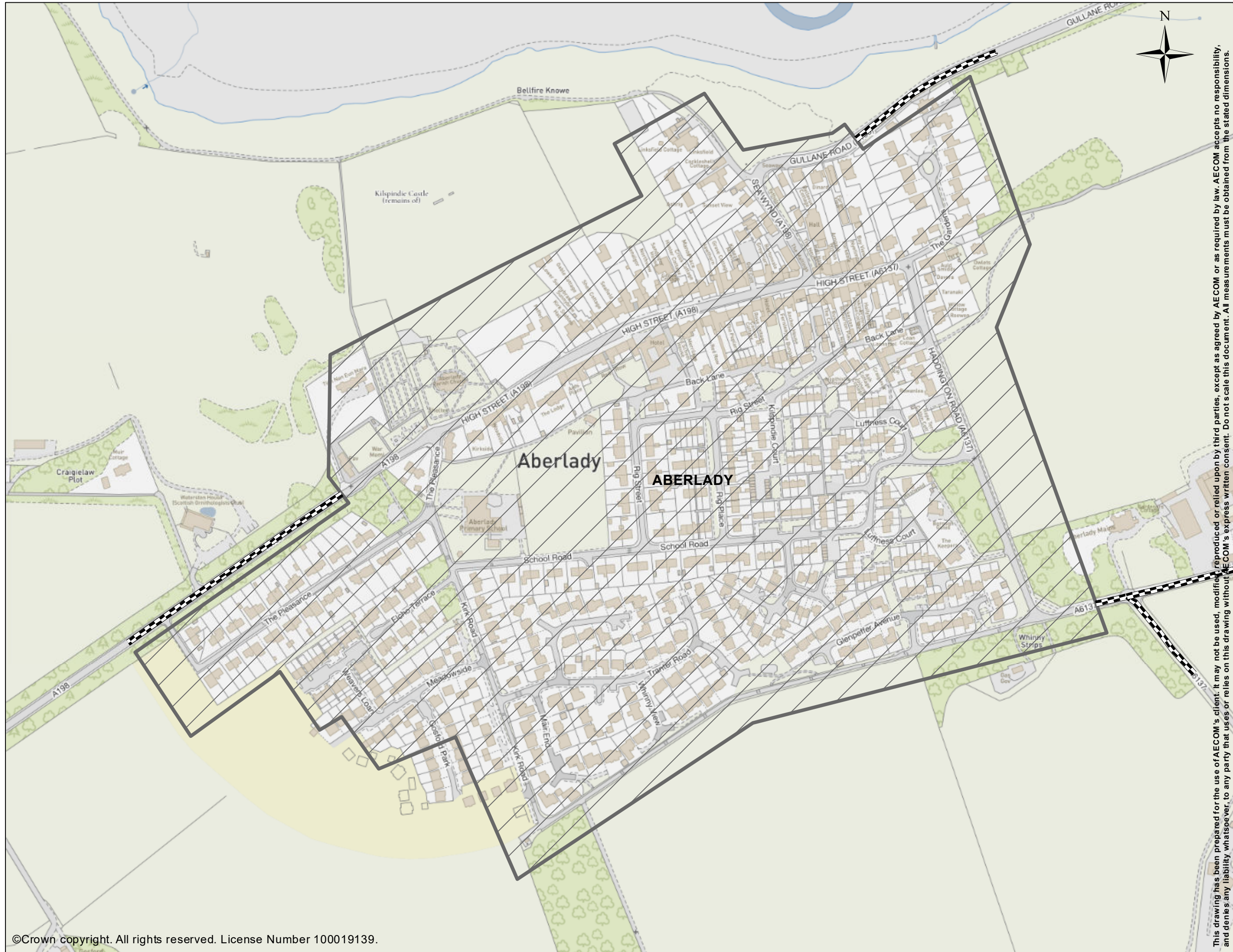
For Publication

Additional information:

Part of appendix 1, sub appendix F, to Cabinet report dated 8 March 2022 entitled Updated Spaces for People Interventions

Authorised By	Tom Reid
Designation	Head of Infrastructure
Date	03/03/22

For Office Use Only:	
Library Reference	35/22
Date Received	03/03/22
Bulletin	Mar 2022



This drawing has been prepared for the use of AECOM's client. It may not be used, modified, reproduced or relied upon by third parties, except as agreed by AECOM or as required by law. AECOM accepts no responsibility, and denies any liability whatsoever, to any party that uses or relies on this drawing without AECOM's express written consent. Do not scale this document. All measurements must be obtained from the stated dimensions.

PROJECT
 EAST LoTHIAN COUNCIL
 REVIEW OF REDUCED SPEED
 LIMITS

CLIENT



EAST LoTHIAN COUNCIL

Legend

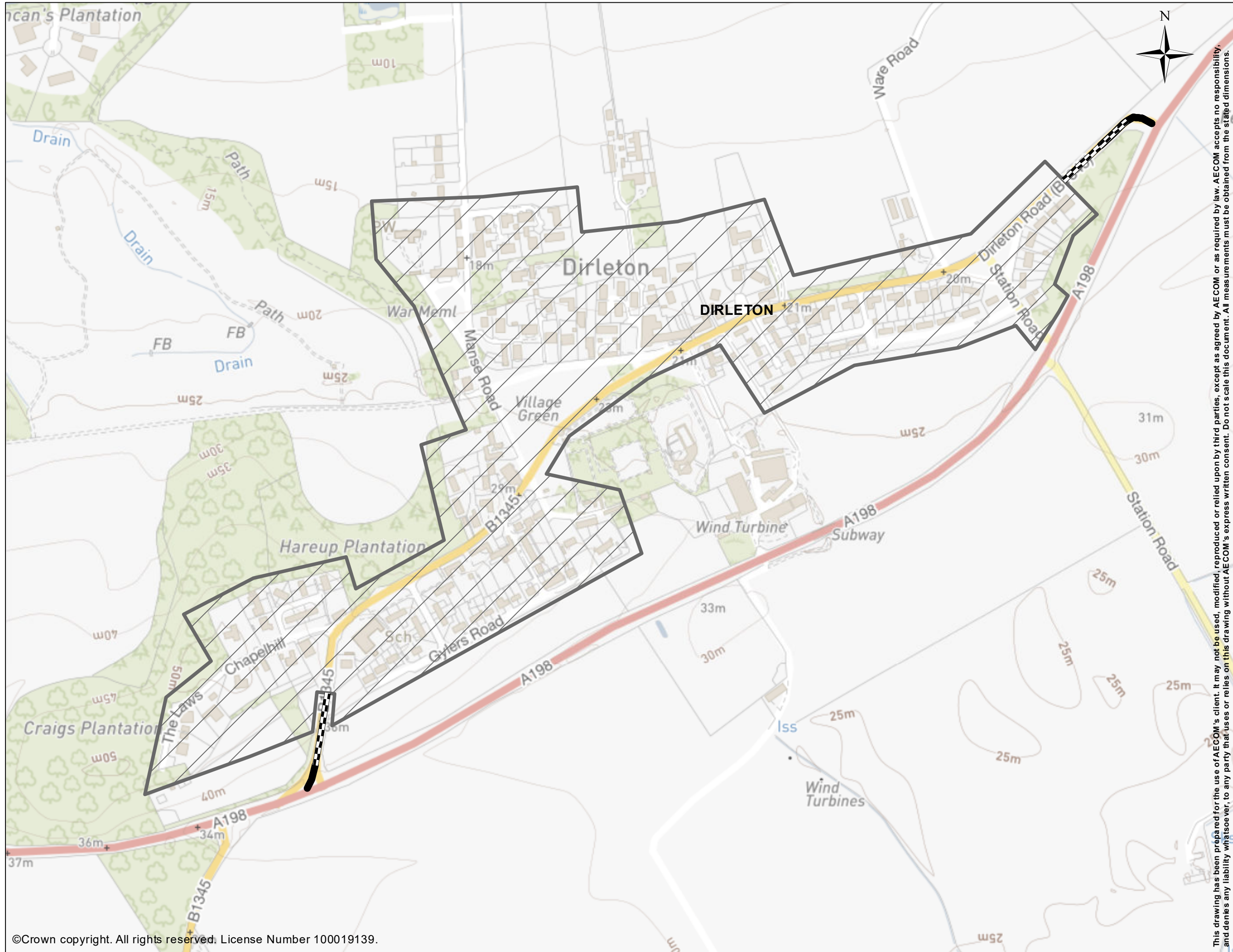
- 20mph Speed Limit
- 30mph Speed Limit

PROJECT NUMBER

60638144

SHEET TITLE

ABERLADY
 NEW SPEED LIMITS



This drawing has been prepared for the use of AECOM's client. It may not be used, modified, reproduced or relied upon by third parties, except as agreed by AECOM or as required by law. AECOM accepts no responsibility, and denies any liability whatsoever, to any party that uses or relies on this drawing without AECOM's express written consent. Do not scale this document. All measurements must be obtained from the stated dimensions.




PROJECT
 EAST LOTHIAN COUNCIL
 REVIEW OF REDUCED SPEED
 LIMITS

CLIENT



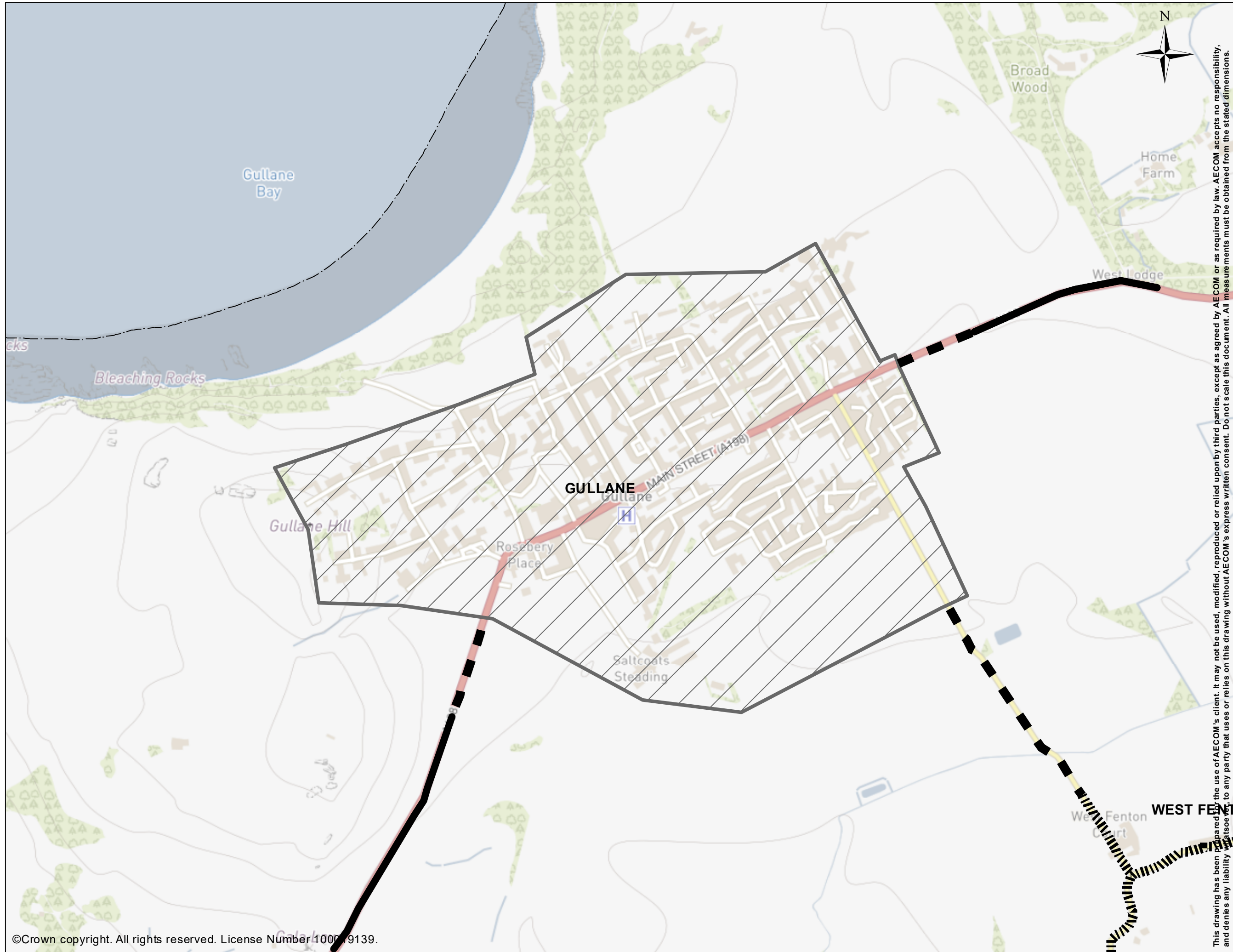
EAST LOTHIAN COUNCIL

Legend

-  20mph Speed Limit
-  30mph Speed Limit
-  National Speed Limit

PROJECT NUMBER
 60638144

SHEET TITLE
 DIRLETON
 NEW SPEED LIMITS



This drawing has been prepared for the use of AECOM's client. It may not be used, modified, reproduced or relied upon by third parties, except as agreed by AECOM or as required by law. AECOM accepts no responsibility, and denies any liability whatsoever, to any party that uses or relies on this drawing without AECOM's express written consent. Do not scale this document. All measurements must be obtained from the stated dimensions.





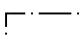
PROJECT
 EAST LoTHIAN COUNCIL
 REVIEW OF REDUCED SPEED
 LIMITS

CLIENT



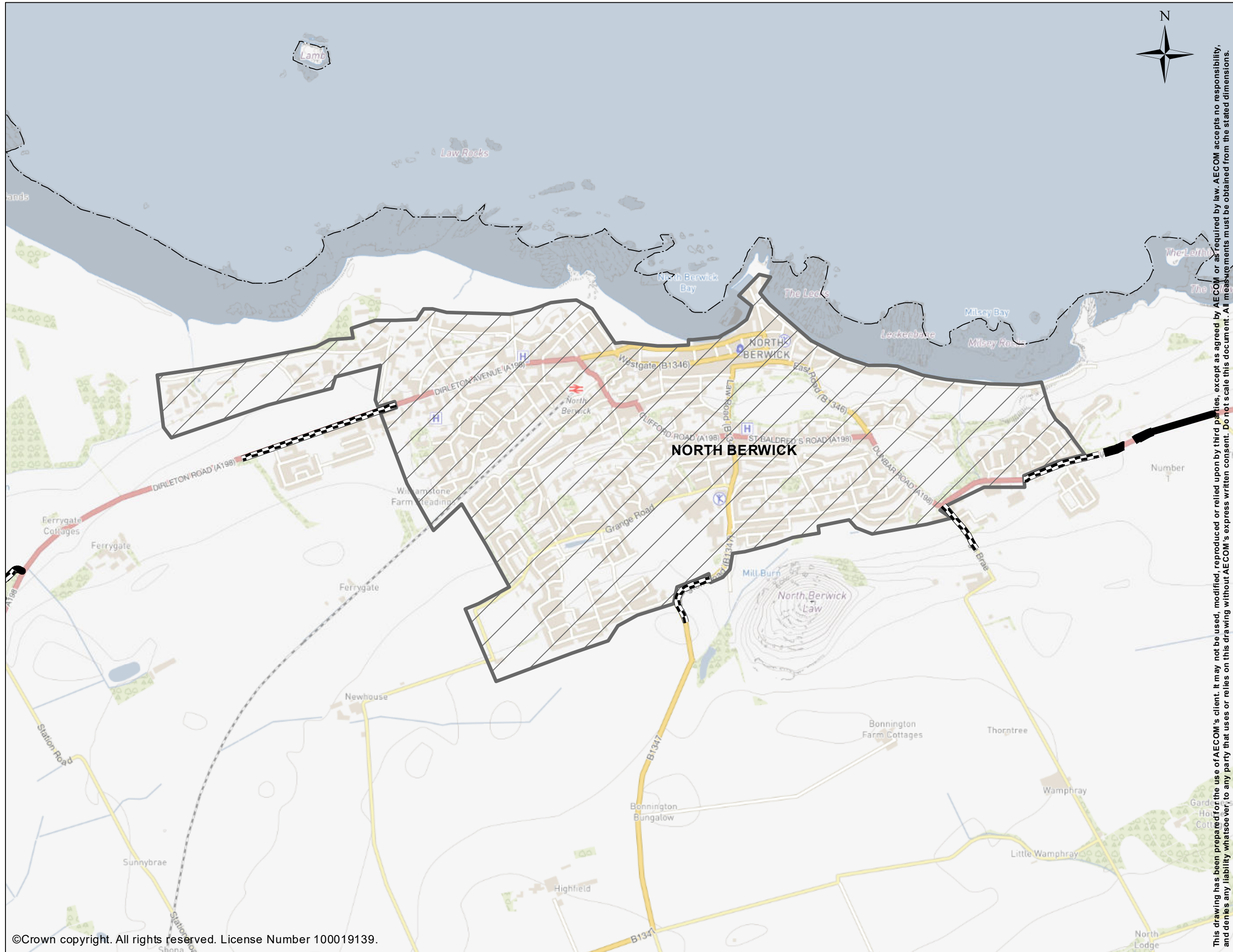
EAST LoTHIAN COUNCIL

Legend

-  20mph Speed Limit
-  30mph Speed Limit
-  40mph Speed Limit
-  National Speed Limit
-  Quiet Road
-  ELC Local Authority Area

PROJECT NUMBER
 60638144

SHEET TITLE
 GULLANE
 NEW SPEED LIMITS



This drawing has been prepared for the use of AECOM's client. It may not be used, modified, reproduced or relied upon by third parties, except as agreed by AECOM or as required by law. AECOM accepts no responsibility, and denies any liability whatsoever, to any party that uses or relies on this drawing without AECOM's express written consent. Do not scale this document. All measurements must be obtained from the stated dimensions.

PROJECT

EAST LOTHIAN COUNCIL
REVIEW OF REDUCED SPEED LIMITS

CLIENT



EAST LOTHIAN COUNCIL

Legend

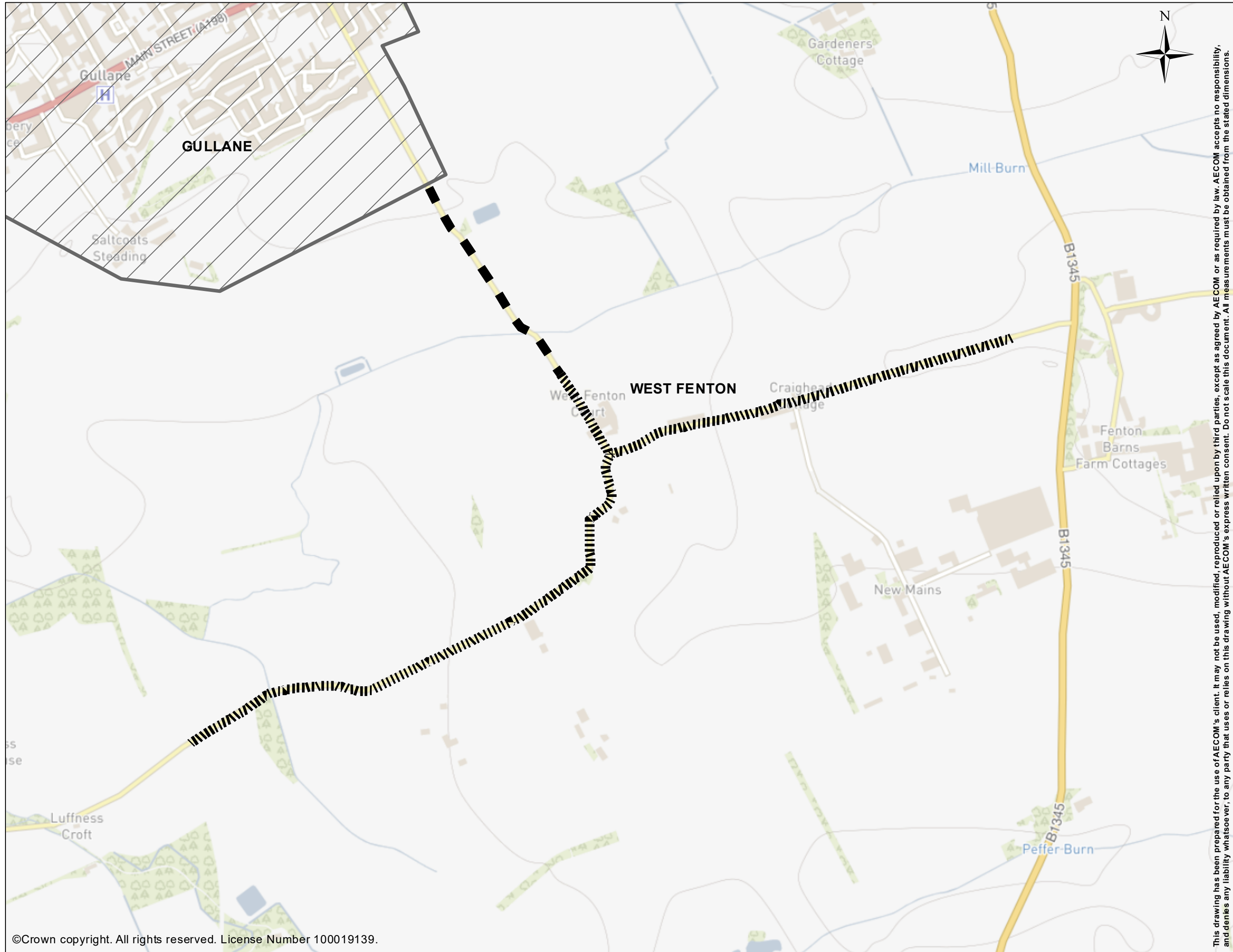
- 20mph Speed Limit
- 30mph Speed Limit
- 40mph Speed Limit
- National Speed Limit
- ELC Local Authority Area

PROJECT NUMBER

60638144

SHEET TITLE

NORTH BERWICK
NEW SPEED LIMITS






This drawing has been prepared for the use of AECOM's client. It may not be used, modified, reproduced or relied upon by third parties, except as agreed by AECOM or as required by law. AECOM accepts no responsibility, and denies any liability whatsoever, to any party that uses or relies on this drawing without AECOM's express written consent. Do not scale this document. All measurements must be obtained from the stated dimensions.

PROJECT
EAST LOTHIAN COUNCIL
REVIEW OF REDUCED SPEED
LIMITS

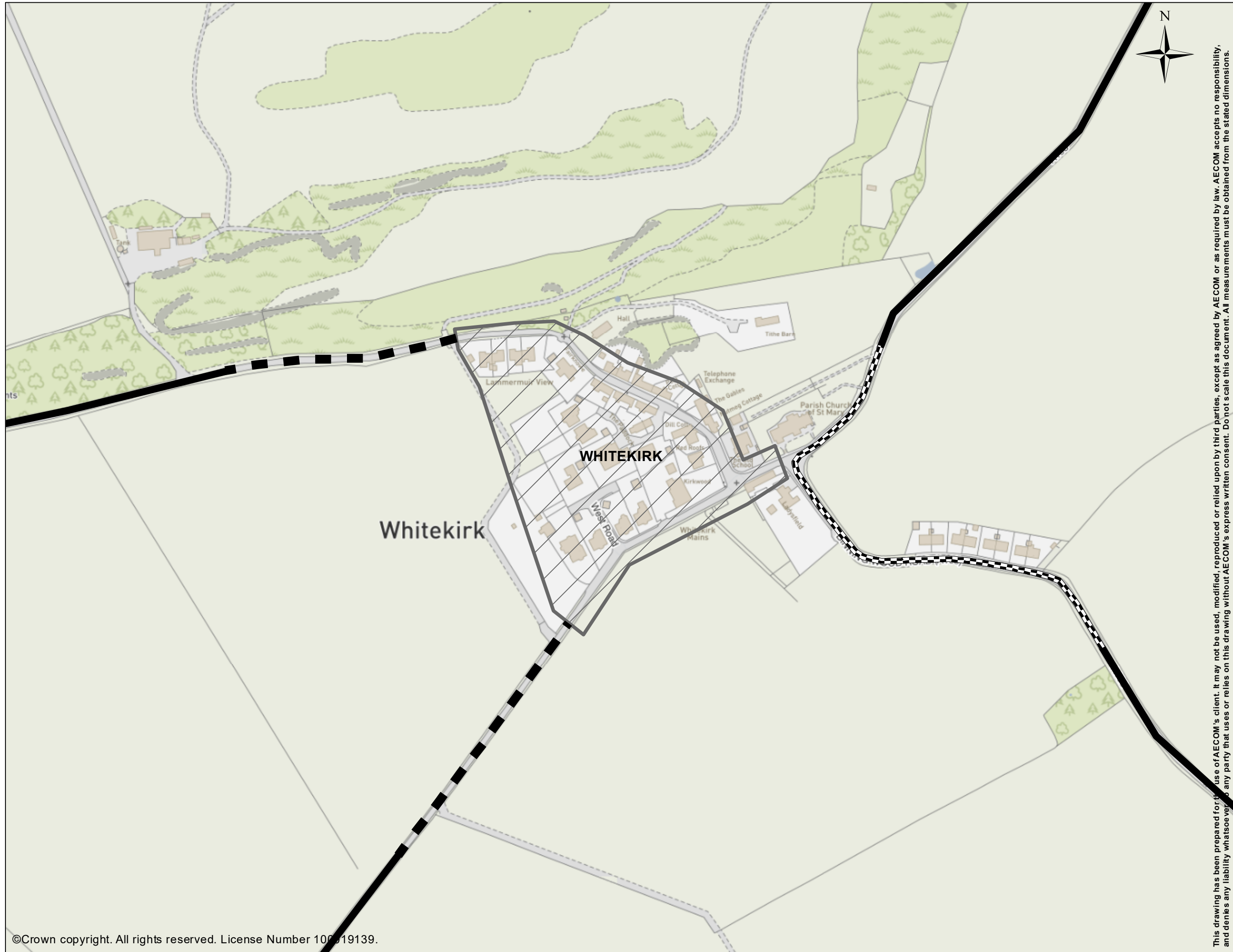
CLIENT

EAST LOTHIAN COUNCIL

Legend
 20mph Speed Limit
 40mph Speed Limit
 Quiet Road

PROJECT NUMBER
60638144

SHEET TITLE
WEST FENTON
NEW SPEED LIMITS







This drawing has been prepared for the use of AECOM's client. It may not be used, modified, reproduced or relied upon by third parties, except as agreed by AECOM or as required by law. AECOM accepts no responsibility, and denies any liability whatsoever to any party that uses or relies on this drawing without AECOM's express written consent. Do not scale this document. All measurements must be obtained from the stated dimensions.

PROJECT
EAST LoTHIAN COUNCIL
REVIEW OF REDUCED SPEED
LIMITS

CLIENT

EAST LoTHIAN COUNCIL

Legend
 20mph Speed Limit
 30mph Speed Limit
 40mph Speed Limit
 National Speed Limit

PROJECT NUMBER
60638144

SHEET TITLE
WHITEKIRK
NEW SPEED LIMITS