

Members' Library Service Request Form

Date of Document	12/12/25
Originator	Cheyne Hamm
Originator's Ref (if any)	
Document Title	East Lothian Council Public Bodies Climate Change Duties Report 2024/25

Please indicate if access to the document is to be “unrestricted” or “restricted”, with regard to the terms of the Local Government (Access to Information) Act 1985.

Unrestricted	<input type="checkbox"/>	Restricted	<input checked="" type="checkbox"/>
--------------	--------------------------	------------	-------------------------------------

If the document is “restricted”, please state on what grounds (click on grey area for drop-down menu):

For Publication

Additional information:

Authorised By	Keith Dingwall
Designation	Head of Development
Date	15/12/2025

For Office Use Only:	
Library Reference	137/25
Date Received	19/12/25
Bulletin	Dec25

COMMITTEE:	Members' Library Service
MEETING DATE:	December 2025
BY:	Head of Development
REPORT TITLE:	East Lothian Council Public Bodies Climate Change Duties Report 2024/25
REPORT STATUS:	Public

1 PURPOSE OF REPORT

- 1.1 To advise Members of East Lothian Council's delivery against its climate change duties during financial year 2024/25, through the statutory Public Bodies Climate Change Duties Reporting (PBCCDR).

2 RECOMMENDATIONS

Members are recommended to:

- 2.1 Note the Council's journey in respect of climate change. The Council's PBCCDR as submitted to the Scottish Government is set out in Appendix 1.

3 BACKGROUND

- 3.1 The Climate Change (Scotland) Act 2009 Section 44 states that public bodies must:
- act in the way best calculated to contribute to the delivery of Scotland's national emissions reduction targets (mitigation – reducing greenhouse gas emissions);
 - act in the way best calculated to help deliver Scotland's statutory climate change adaptation programme (adaptation – resilience to the impact of climate change);
 - act in a way that it considers is most sustainable.
- 3.2 The PBCCDR demonstrates the operations and services of public bodies in relation to the Climate Change (Scotland) Act 2009. It creates a standard methodology to improve data consistency and sets a

foundation to track climate action across the public sector. The reports are publicly available to support accountability and transparency of climate performances. PBCCDR intends to help public bodies to:

- Identify operational inefficiencies
- Increase transparency
- Improve sustainability reporting
- Improve leadership and engagement
- Integrate objectives in corporate business plans
- Embed action across all departments
- Improve decision making and strategic planning
- Identify opportunities for financial efficiencies and cost savings

3.3 East Lothian Council submitted its first PBCCDR in 2014/15. Every year, a new report is prepared and submitted by 30 November. All PBCCDR, including those submitted by East Lothian Council can be found on the Sustainable Scotland Network's website: <https://sustainablesotlandnetwork.org/reports>. The Network also publishes an annual synthesis report which can be found here: https://sustainablesotlandnetwork.org/slickr_media_upload?id=2768

3.4 In the PBCCDR 2024/25, East Lothian Council again used the CalCommuter survey to measure emissions from commuting and homeworking. The methodology was slightly changed to target our most significant work sites and the different working patterns of teachers. These changes resulted in an improved response rate, with 834 total responses. The updated emissions figure from staff commuting is revised down from 2023/24.

3.5 East Lothian Council's Climate Change Duties Report 2024/25 totals our greenhouse gas emissions at 14,999 tonnes of CO₂ equivalent. Figure 1 illustrates the Council's annual carbon footprint since 2019/20. It demonstrates a continued downward trend of Scope 1 & 2 emissions, though staff commuting & homeworking emissions are less predictable and depend on the tool used to estimate them.

East Lothian Council Emissions 2019/20-2024/25

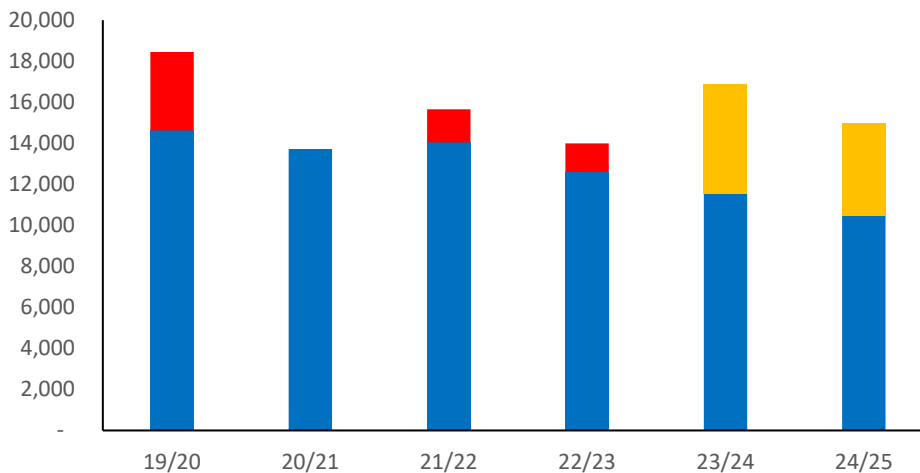


Figure 1: East Lothian Council’s annual greenhouse gas emissions, expressed in tonnes of carbon dioxide equivalent (tCO₂e). Y-axis = tCO₂e, x-axis = financial year (20xx/xx). Blue = ELC emissions not including staff commuting & homeworking; red = ELC staff commuting & homeworking emissions measured by Zero Waste Scotland tool; orange = staff commuting & homeworking emissions measured by CalCommuter.

3.6 The reported greenhouse gases can be broken down into Scope 1 (direct emissions from sources owned or operated by the Council, such as gas and fleet vehicles), Scope 2 (indirect emissions from the consumption of purchased electricity generated outwith the Council) and Scope 3 emissions (indirect emissions that are a consequence of the operations or services of the Council, such as waste management and business mileage). Table 1 illustrates tonnes of carbon equivalent emissions associated with the different scopes.

3.7 Compared to 2023/24, East Lothian Council’s overall emissions fell by 11%. Significant progress was made in reducing waste emissions, down by 55% (-315 tonnes), with landfill emission being cut by 55% following a 56% reduction in tonnage. Fleet emissions decreased by 25% (-303 tonnes) but grey fleet business mileage rose by 20% (28 tonnes). Emissions from water supply & treatment fell by 31%, driven by a decline in water usage by 20% (33,000 cubic litres). Electricity usage fell by 7% and emissions fell by the same amount. We consumed 3% less natural gas which drove a 144 tonne drop in emissions, and overall emissions from stationary fuels across our estate fell by 163 tonnes.

More detail on the different scopes of emissions, consumption data and carbon emissions categories can be found in Appendix 1. PART 3: EMISSIONS, TARGETS AND PROJECTS.

Table 1. Breakdown East Lothian Council’s emissions across scopes

Year	Scope 1	Scope 2	Scope 3	Total
2019/20	7,594	5,220	5,636	18,450
2020/21	8,043	3,750	1,930	13,723

2021/22	7,478	3,874	4,301	15,653
2022/23	6,822	3,542	3,625	13,990
2023/24	6,877	3,575	6,406	16,858
2024/25	6,410	3,308	5,280	14,999

3.8 Table 2 lists the year-on-year consumption data for major emissions categories.

Table 2. Breakdown of key emissions categories 2023/24 in comparison with 2022/23.

Emissions Category	Emissions (tCO₂e) In 2023/24	Emissions (tCO₂e) In 2024/25	Percentage Change
Natural Gas	5,258.4	5114.5	-3%
Grid Electricity	3,884.4	3,600.6	-7%
Water	47.1	32.4	-31%
Stationary fuel	398.6	379.2	-5%
Transport	1,371.5	1,096.5	-20%
Waste	575.5	260.9	-55%
Commuting & homeworking	5,324.7	4,514.4	-15%

4 POLICY IMPLICATIONS

4.1 There are no policy implications directly arising from the Council's progress report. The data and evidence gathered for this reports supports the East Lothian Council Climate Change Strategy 2025-30.

5 RESOURCE AND OTHER IMPLICATIONS

5.1 Finance: None

5.2 Human Resources: None

5.3 Other (e.g. Legal/IT): None

5.4 Risk: None

6 INTEGRATED IMPACT ASSESSMENT

6.1 **Select the statement that is appropriate to your report by placing an 'X' in the relevant box.**

An Integrated Impact Assessment screening process has been undertaken and the subject of this report does not affect the wellbeing of the community or have a significant impact on: equality and human rights; tackling socio-



economic disadvantages and poverty; climate change, the environment and sustainability; the Council's role as a corporate parent; or the storage/collection of personal data.

or

The subject of this report has been through the Integrated Impact Assessment process and impacts have been identified as follows:

Subject	Impacts identified (Yes, No or N/A)
Equality and human rights	
Socio-economic disadvantage/poverty	
Climate change, the environment and sustainability	
Corporate parenting and care-experienced young people	
Storage/collection of personal data	
Other	

7 APPENDICES

- 7.1 Appendix 1: East Lothian Council's Public Sector Climate Change Duties Report 2024/25

8 BACKGROUND PAPERS

- 8.1 East Lothian Council Climate Change Strategy 2025-30
- 8.2 East Lothian Council Climate Change Action Plan 2025-30

9 AUTHOR AND APPROVAL DETAILS

Report Author(s)

Name	Cheyne Hamm
Designation	Sustainability & Climate Change Officer
Tel/Email	climatechange@eastlothian.gov.uk
Date	12 December 2025

Head of Service Approval

Name	Keith Dingwall
Designation	Head of Development
Confirmation that IIA and other relevant checks (e.g. finance/legal) have been completed	Yes
Approval Date	15 December 2025

Appendix 1: East Lothian Council's Public Bodies Climate Change Duties Report 2024/25

**TABLE OF CONTENTS
Required**

PART 1: PROFILE OF REPORTING BODY

PART 2: GOVERNANCE

PART 3: EMISSIONS, TARGETS AND PROJECTS

PART 4: ADAPTATION

PART 5: PROCUREMENT

PART 6: VALIDATION AND DECLARATION

PART 1: PROFILE OF REPORTING BODY

1a Name of the reporting body

East Lothian Council

1b Type of body

Local Government

1c Highest number of full-time equivalent staff in the body during report year

5013

1d Metrics used by the body

Specify the metrics that the body uses to assess its performance in relation to climate change and sustainability.

Metric	Units	Value	Comments
Population size served	population	115180.00	NRS mid-2024 Population estimate

1e Overall budget of the body

Specify approximate £/annum for the report year.

Budget

£517,522,000

Budget Comments

Includes capital & revenue

1f Report year

Specify the report year.

Report Year

Report Year Comments

Financial/Calendar/Other

Financial Year 2024/25

1g Context

Provide a summary of the body's nature and functions that are relevant to climate change reporting.

East Lothian Council is a local authority that governs the council area of the same name. We provide statutory services such as schools, social work, and waste collection alongside permissive powers and regulatory powers. The Council has a number of buildings, most of which are part of our learning estate. We also owns homes for the purpose of social housing. The use and maintenance of our buildings produces emissions. Staff commuting to these workplaces also produces emissions. We own a relatively small amount of land. Our estate and infrastructure are vulnerable to climate change, as is our coast. The town of Musselburgh, which is our largest and most densely populated settlement, has been identified as particularly susceptible to river and coastal flooding. Like all public bodies in Scotland, we are obliged under the Climate Change (Scotland) Act 2009 to: act in a way best calculated to contribute to emissions reduction targets, act in a way best calculated to deliver the Scottish National Adaptation Plan, and act in a way we consider most sustainable.

PART 2: GOVERNANCE, MANAGEMENT AND STRATEGY

2a How is climate change governed in the body?

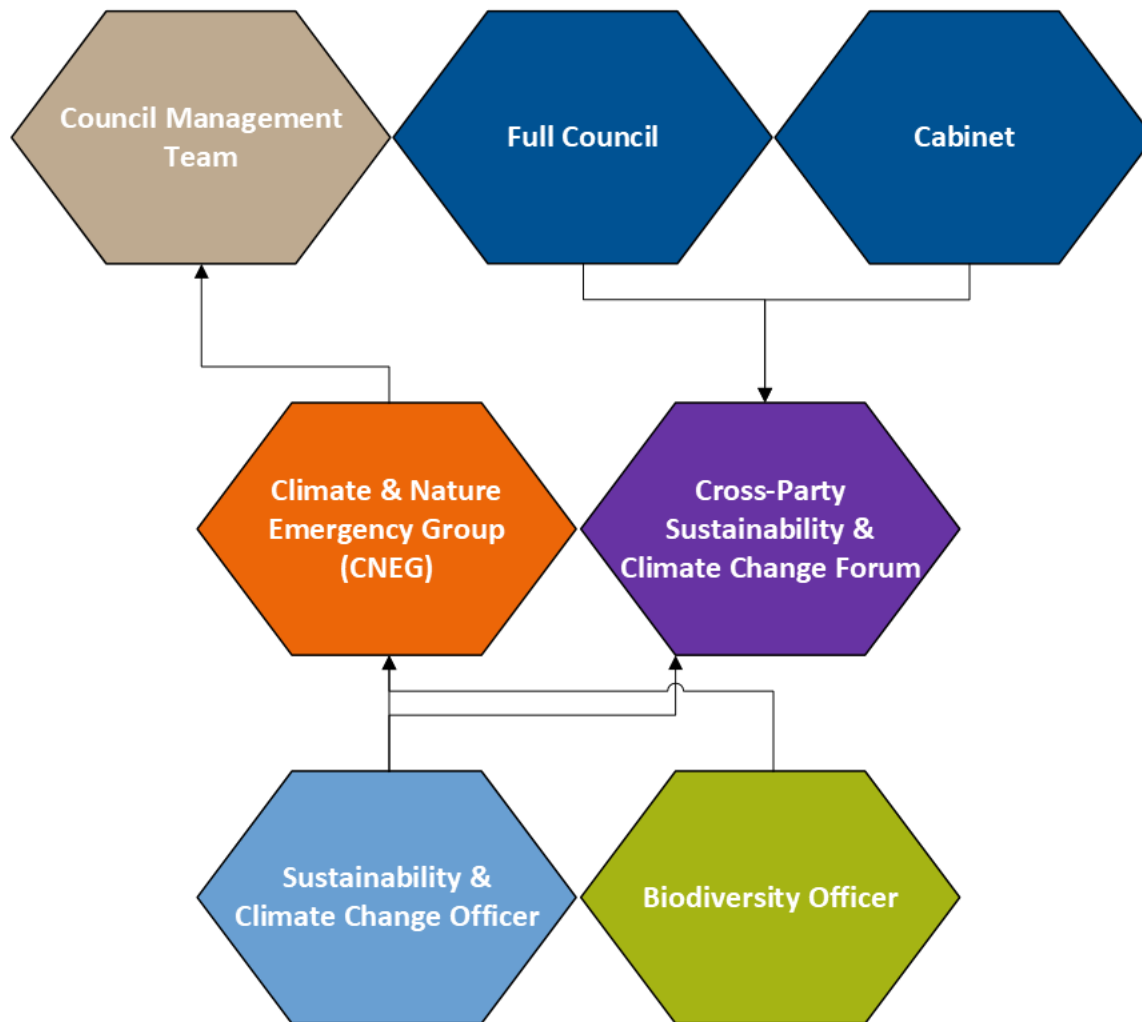
Provide a summary of the roles performed by the body's governance bodies and members in relation to climate change. If any of the body's activities in relation to climate change sit outside its own governance arrangements (in relation to, for example, land use, adaptation, transport, business travel, waste, information and communication technology, procurement or behaviour change), identify these activities and the governance arrangements. Provide a diagram / chart to outline the governance structure within the body.

The main governing body for climate change is the Climate and Nature Emergency Group (CNEG). CNEG is an officers' group that meets quarterly. It has responsibility to oversee and deliver progress against the Council's Climate Change Strategy and address the nature emergency. The group is normally chaired by the Executive Director of Place but has been chaired on an interim basis by the Interim Head of Development for a year. Membership of the Group is drawn from services across the Council and includes representation from the East Lothian Health & Social Care Partnership. Its role and remit also includes overseeing compliance with the statutory duties of the Climate Change (Scotland) Act 2009, Section 44.

Elected Councillors also drive forward and oversee climate action. The Cross-Party Sustainability Forum also meets quarterly and is an avenue for Elected Members and Senior Management to receive more frequent updates on our climate actions. The Forum provides political oversight of delivery against the Climate Change Strategy and other climate-positive projects, such as our Local Heat and Energy Efficiency Strategy.

Our Sustainability & Climate Change Officer pulls together these strands of climate action. They are managed by the Service Manager - Planning. Alongside the Council's Biodiversity Officer, the Sustainability & Climate Change Officer convenes and sets the agenda for CNEG and complete our reporting.

See the diagramme below:



2b How is climate change action managed and embedded in the body?

Provide a summary of how decision-making in relation to climate change action by the body is managed and how responsibility is allocated to the body's senior staff, departmental heads etc. If any such decision-making sits outside the body's own governance arrangements (in relation to, for example, land use, adaptation, transport, business travel, waste, information and communication technology, procurement or behaviour change), identify how this is managed and how responsibility is allocated outside the body. Provide a diagram to show how responsibility is allocated to the body's senior staff, departmental heads etc.

Climate change is addressed in several key Council documents. The East Lothian Council Plan (2022-2027) names 'Respond to the Climate Emergency' as one of its top three overarching objectives. The Council's Recovery & Renewal Plan includes the action category 'climate and ecological emergency' in its plan to recover from the pandemic. Responding to climate change is also a key outcome of the East Lothian Council Poverty Plan, and we are unique in having climate change as a 6th pillar of community wealth building in the East Lothian Community Wealth Building Charter.

Politically, responsibility for climate change is shared between the spokesperson for the Environment and the chair of the Cross-Party Climate Change & Sustainability Forum.

Heads of service and service managers also complete and report on actions in the Council's Climate Change Action Plan.

2c Does the body have specific climate change mitigation and adaptation objectives in its corporate plan or similar document?

Provide a brief summary of objectives if they exist.

Wording of objective	Name of document	Document Link
The East Lothian Council Plan, overarching objective 'Respond to the Climate Emergency'.	The East Lothian Council Plan (2022-2027)	https://www.eastlothian.gov.uk/info/210603/performance_and_spending/12729/the_east_lothian_council_plan_2022-2027

<p>East Lothian Plan, outcome 2.2 'East Lothian people can live affordably and contribute to a thriving life in a high quality environment'.</p>	<p>The East Lothian Plan (2017-2027)</p>	<p>https://www.eastlothian.gov.uk/info/210592/community_planning/11857/the_east_lothian_plan_2017-27/1</p>
<p>The East Lothian Local Development Plan 2018 contains four objectives with corresponding outcomes. The objectives include:</p> <ul style="list-style-type: none"> • "Promote sustainable development" • "Protect and enhance the area's high quality environment and its special identity" • "Ensure adequate infrastructure capacity and an appropriate use of resources" 	<p>East Lothian Council Local Development Plan (2018)</p>	<p>https://www.eastlothian.gov.uk/info/210547/planning_and_building_standards/12242/local_development_plan</p>
<p>One of the five priority outcomes reads: All homes within East Lothian are maintained to a high standard, are energy efficient and contribute to meeting East Lothian's climate change targets.</p>	<p>East Lothian Council Local Housing Strategy (2024-2029)</p>	<p>https://www.eastlothian.gov.uk/downloads/file/33828/approved_local_housing_strategy_lhs_2024-2029</p>

<p>The East Lothian Local Transport Strategy, overarching vision 'East Lothian will have well-connected communities with increased use of sustainable transport modes to access services and amenities'.</p>	<p>The East Lothian Council Local Transport Strategy (2018-2024)</p>	<p>https://www.eastlothian.gov.uk/downloads/download/13256/local_transport_strategy_2018-2024</p>
<p>East Lothian Council's Procurement Strategy, one of the five core focus areas of the Strategy is to 'Contribute to the Council's Net Zero climate change targets'. The objective includes five priority action areas to mitigate climate change and create more resilient supply chains as part of adaptation.</p>	<p>Procurement Strategy (2023-2028)</p>	<p>https://www.eastlothian.gov.uk/downloads/file/27544/procurement_strategy</p>
<p>East Lothian Council's Sustainable Fleet Management Strategy sets the vision to '(...) provide effective fleet procurement, management, and a workshop maintenance service, with a commitment to significantly reducing our reliance on fossil fuels and to make our assets environmentally sustainable</p>	<p>Sustainable Fleet Management Strategy (2022-2027)</p>	<p>https://www.eastlothian.gov.uk/meetings/meeting/16940/cabinet</p>

within the UK and Scottish government's timeline of key deliverables.' and aims to achieve zero tail pipe emissions from its fleet vehicles by 2035.

--	--	--

2d Does the body have a climate change plan or strategy?

If yes, provide the name of any such document and details of where a copy of the document may be obtained or accessed.

Yes. In April 2025, East Lothian Council (ELC) adopted the ELC Climate Change Strategy & Action Plan 2025-30.

The Strategy can be downloaded here: https://www.eastlothian.gov.uk/downloads/file/34732/climate_change_strategy_2025-2030

The Action Plan can be downloaded here: https://www.eastlothian.gov.uk/downloads/file/34733/climate_change_strategy_2025-2030_action_plan

2e Does the body have any plans or strategies covering the following areas that include climate change?

Provide the name of any such document and the timeframe covered.

Topic area	Name of document	Link	Time period covered	Comments
------------	------------------	------	---------------------	----------

Adaptation	East Lothian Council Climate Change Strategy 2025-30	https://www.eastlothian.gov.uk/downloads/file/34732/climate_change_strategy_2025-2030	2025-30	Adaptation sits across the 4 Outcomes of the ELC Climate Change Strategy 2025-30. Our organisation-wide approach to adaptation is to follow an urgency-based framework across all our estate & operations. This assesses for risk & vulnerability and encourages collaborating across services for a solution. The ELC Climate Change Action Plan supports this approach.
Business travel	Sustainable Fleet Management Plan	https://www.eastlothian.gov.uk/download/meetings/id/24713/09_climate_change_strategy_annual_update	2022-2027	This strategy provides the framework for the procurement, management and maintenance of all the vehicles, plant and mechanical equipment operated and required by the Council. It includes targets for evaluating, reporting on, and replacing part of the current fleet, a procurement programme of Ultra-Low Emissions Vehicles (ULEVs), as well as infrastructure updates as part of the Council's pathway to achieve a zero tailpipe emissions fleet by 2035.
Staff Travel	East Lothian Council Travel Plan	https://www.eastlothian.gov.uk/download/meetings/id/25608/02_east_lothian_council_travel_plan	2025-2030	The Council's Travel Plan sets out targets and activities to reduce staff commuting emissions through behaviour change. Targets include 5% reduction in commuting miles, 10% increase in modal share of public transport, and a 10% reduction in grey fleet mileage. Actions include promoting sustainable travel options and producing personal travel plans.

Energy efficiency	Local Heat and Energy Efficiency Strategy	https://www.eastlothian.gov.uk/download/meetings/id/25251/13024_local_heat_and_energy_efficiency_strategy	2024-2029	The LHEES Strategy and Delivery Plan focus on delivering five main outcomes: 1. Property owners are engaged with the need to reduce carbon emissions and empowered to make decisions on energy efficiency and heating solutions. 2. East Lothian's homes and buildings are as energy efficient as possible. 3. Heat solutions are delivered to tackle fuel poverty and meet the 2045 net zero target. 4. Investment and grant funding is secured to deliver net zero projects. 5. A significant proportion of the benefits of net zero investment remain within the East Lothian economy.
Fleet transport	Sustainable Fleet Management Plan	https://www.eastlothian.gov.uk/download/meetings/id/24713/09_climate_change_strategy_annual_update	2022-2027	This strategy provides the framework for the procurement, management and maintenance of all the vehicles, plant and mechanical equipment operated and required by the Council. It includes targets for evaluating, reporting on, and replacing part of the current fleet, a procurement programme of Ultra-Low Emissions Vehicles (ULEVs), as well as infrastructure updates as part of the Council's pathway to achieve a zero tailpipe emissions fleet by 2035.
ICT				ICT documents do not contain climate change objectives
Renewable energy	East Lothian Council Climate Change Strategy 2025-30	https://www.eastlothian.gov.uk/downloads/file/34732/climate_change_strategy_2025-2030	2025-30	Transitioning to renewable energy is supported by the ELC Climate Change Strategy 2025-30. Our organisation-wide approach to energy is to follow the mitigation hierarchy across all our estate & operations. This means we target renewable

				energy solutions that reduce overall energy use and result in cost savings. The ELC Climate Change Action Plan supports this approach.
Sustainable/renewable heat	Local Heat and Energy Efficiency Strategy	https://www.eastlothian.gov.uk/download/meetings/id/25251/13024_local_heat_and_energy_efficiency_strategy	2024-2029	The LHEES Strategy and Delivery Plan focus on delivering five main outcomes: 1. Property owners are engaged with the need to reduce carbon emissions and empowered to make decisions on energy efficiency and heating solutions. 2. East Lothian's homes and buildings are as energy efficient as possible. 3. Heat solutions are delivered to tackle fuel poverty and meet the 2045 net zero target. 4. Investment and grant funding is secured to deliver net zero projects. 5. A significant proportion of the benefits of net zero investment remain within the East Lothian economy.

Waste management	East Lothian Council Climate Change Strategy 2025-30	https://www.eastlothian.gov.uk/downloads/file/34732/climate_change_strategy_2025-2030	2025-30	Waste is a Focus Area of the ELC Climate Change Strategy 2025-30 under the 'Services' theme. Our organisation-wide approach to reducing emissions from waste is to follow the waste hierarchy. This means we change our waste collection to encourage residents to produce less waste and recycle more. We track and report on the results of these changes in the ELC Climate Change Action Plan.
Water and sewerage	Supplementary Planning Guidance as part of East Lothian Council's Local Development Plan 2018	https://www.eastlothian.gov.uk/downloads/download/13103/supplementary_planning_guidance_spg		Sustainable Drainage Systems (SuDS) is part of the supplementary planning guidance in the Council's Local Development Plan 2018.
Land Use	Supplementary Planning Guidance as part of East Lothian Council's Local Development Plan 2018	https://www.eastlothian.gov.uk/download/downloads/id/30113/green_network_strategy_spg		The Green Networks Strategy is part of the supplementary planning guidance in the Council's Local Development Plan 2018.
Other (please specify in comments)				

2f What are the body's top 5 priorities for climate change governance, management and strategy for the year ahead?

Provide a brief summary of the body's areas and activities of focus for the year ahead.

1. Alignment with national policy landscape: We are anticipating several pieces of legislation in the coming year, including Scottish EPCs, Statutory Guidance for Public Bodies, Social Housing Net Zero standards, the Heat in Buildings Bill, and Scotland's Climate Change Plan. We will assess the necessary steps to align with each of these new documents when they are adopted.
2. Area-wide climate planning and working with partners: It is incumbent on local authorities to set emissions reduction and climate adaptation targets for their geographical boundaries. We are supported in doing so by the Scottish Climate Intelligence Service (SCIS). We will continue to work with the SCIS and work with our local partners to set targets and develop action plans to tackle climate change across East Lothian, though we need clarity on the powers & resources we will have to do so.
3. Adaptation and coastal change: We will continue development of our Coastal Change Adaptation Plan, which we target completing by the end of 2026. We will also continue to work with neighbouring local authorities, partner organisations, and Adaptation Scotland on the Climate Ready South East Scotland partnership and investment plans including on nature-based solutions to improved climate resilience. See the 'Adaptation' tab for more details.
4. Planning: We expect to produce and consult on a Proposed Local Development Plan 2 in 2026. The Proposed Plan should guide development to sustainable and climate ready locations while protecting and enhancing nature, which will have a significant impact on climate adaptation & mitigation in East Lothian.
5. Transportation: Emissions from transport continue to be one of the largest sources of emissions in the county and among the most challenging to decarbonise. We are planning to refresh our Active Travel Improvement Strategy to guide investment in active travel towards sustainable, effective, and climate-resilient projects.

2g Has the body used the Climate Change Assessment Tool (a) or equivalent tool to self-assess its capability / performance?

If yes, please provide details of the key findings and resultant action taken.

(a) This refers to the tool developed by Resource Efficient Scotland for self-assessing an organisation's capability / performance in relation to climate change.

No

2h Supporting information and best practice

Provide any other relevant supporting information and any examples of best practice by the body in relation to governance, management and strategy.

PART 3: EMISSIONS, TARGETS AND PROJECTS

Emissions								
3a Emissions from the start of the year which the body uses as a baseline (for its carbon footprint) to the end of the report year.								
<p>Complete the following table using the greenhouse gas emissions total for the body calculated on the same basis as for its annual carbon footprint / management reporting or, where applicable, its sustainability reporting. Include greenhouse gas emissions from the body’s estate and operations (a) (measured and reported in accordance with Scopes 1 & 2 and, to the extent applicable, selected Scope 3 of the Greenhouse Gas Protocol (b). If data is not available for any year from the start of the baseline year to the end of the report year, provide an explanation in the comments column.</p> <p>(a) No information is required on the effect of the body on emissions which are not from its estate and operations. (b) This refers to the document entitled “The greenhouse gas protocol. A corporate accounting and reporting standard (revised edition)”, World Business Council for Sustainable Development, Geneva, Switzerland / World Resources Institute, Washington DC, USA (2004), ISBN: 1-56973-568-9.</p>								
Reference year	Year	Year type	Scope 1	Scope 2	Scope 3	Total	Units	Comments
Baseline Year	2014/15	Financial/Calendar/Other	7,211.00	10,519.00	3,033.00	20,763.00	tCO ₂ e	
Year 1 carbon footprint	2015/16	Financial/Calendar/Other	5,738.00	10,076.00	3,273.00	19,087.00	tCO ₂ e	
Year 2 carbon footprint	2016/17	Financial/Calendar/Other	5,682.00	8,740.00	3,188.00	17,610.00	tCO ₂ e	
Year 3 carbon footprint	2017/18	Financial/Calendar/Other	6,212.00	7,336.00	3,656.00	17,204.00	tCO ₂ e	
Year 4 carbon footprint	2018/19	Financial/Calendar/Other	7,230.00	5,846.00	1,931.00	15,007.00	tCO ₂ e	
Year 5 carbon footprint	2019/20	Financial/Calendar/Other	7,594.00	5,220.00	5,636.00	18,450.00	tCO ₂ e	Staff commuting emissions added retrospectively
Year 6 carbon footprint	2020/21	Financial/Calendar/Other	8,043.00	3,750.00	1,930.00	13,723.00	tCO ₂ e	Staff commuting

								not included this year
Year 7 carbon footprint	2021/22	Financial/Calendar/Other	7,478.46	3,874.03	4,300.84	15,653.32	tCO ₂ e	Staff commuting included as an emissions category
Year 8 carbon footprint	2022/23	Financial/Calendar/Other	6,822.29	3,542.48	3,625.42	13,990.19	tCO ₂ e	Grey fleet & staff commuting included as emissions categories
Year 9 carbon footprint	2023/24	Financial/Calendar/Other	6,877.02	3,575.11	6,405.62	16,857.75	tCO ₂ e	Grey fleet, staff commuting, and homeworking included as emissions categories
Year 10 carbon footprint	2024/25	Financial/Calendar/Other	6,410.36	3,308.19	5,279.94	14,998.49	tCO ₂ e	Grey fleet, staff commuting, and homeworking included as emissions categories

3b Breakdown of emissions sources.

Complete the following table with the breakdown of emission sources from the body's most recent carbon footprint (greenhouse gas inventory); this should correspond to the last entry in the table in 3(a) above. Use the 'Comments' column to explain what is included within each category of emission source entered in the first column. If there is no data consumption available for an emission source enter the emissions in kgCO₂e in the 'Consumption' column of one of the "Other" rows and assign the scope and an emission factor of 1. No information is required on the effect of the body on emissions which are not from its estate and operations.

(a) Emissions factors are published annually by the UK Department for Business, Energy & Industrial Strategy

Emissions Factor Year **2024**

You can filter emission sources by "type" in column C to enable quicker selection of emission source in column D. See the list in the Emissions Tab.

User defined emission sources can be entered in rows 131 onwards. **Please only use these if you cannot find a relevant emission source in the dropdown list or you have a bespoke emission factor or non-standard derivation of emissions e.g. based on a survey/consumption data.** If you require extra rows in the table please send the template to ccreporting@ed.ac.uk.

Emission Type	Emission source	Scope	Consumption data	Units	Emission factor	Units	Emissions (tCO ₂ e)	Comments
Fuels	Natural gas	Scope 1	27,963,532	kWh	0.18290	kg CO ₂ e/kWh	5114.53000	
Fuels	LPG	Scope 1	54,895	litres	1.55713	kg CO ₂ e/litres	85.47865	
Fuels	Gas oil	Scope 1	93,325	litres	2.75541	kg CO ₂ e/litres	257.14864	
Fuels	Burning oil (Kerosene)	Scope 1	14,382	litres	2.54015	kg CO ₂ e/litres	36.53244	

Electricity	Electricity: UK	Scope 2	12,274,667	kWh	0.20705	kg CO2e/kWh	2541.46980	
Electricity	Transmission and distribution - Electricity: UK	Scope 3	12,274,667	kWh	0.01830	kg CO2e/kWh	224.62641	
Electricity	Electricity: UK	Scope 2	2,559,871	kWh	0.20705	kg CO2e/kWh	530.02129	Street lighting
Electricity	Transmission and distribution - Electricity: UK	Scope 3	2,559,871	kWh	0.01830	kg CO2e/kWh	46.84564	Street lighting
Electricity	Electricity: UK	Scope 2	11,543	kWh	0.20705	kg CO2e/kWh	2.38998	Traffic signals
Electricity	Transmission and distribution - Electricity: UK	Scope 3	11,543	kWh	0.01830	kg CO2e/kWh	0.21124	Traffic signals
Water	Water supply	Scope 3	129,593	cubic metres	0.08000	kg CO2e/cubic metres	10.36744	
Water	Water treatment	Scope 3	129,593	cubic metres	0.17000	kg CO2e/cubic metres	22.03081	
Waste	Commercial and industrial waste - Landfill	Scope 3	102	tonnes	520.33420	kg CO2e/tonnes	53.30496	
Waste	Commercial and industrial waste - Combustion	Scope 3	1,431	tonnes	6.41061	kg CO2e/tonnes	9.17338	
Waste	Mixed dry recyclates - Recycled	Scope 3	16626	tonnes	6.41061	kg CO2e/tonnes	106.58280	
Waste	Organic: mixed food and garden waste - Composting	Scope 3	7,102	tonnes	8.88386	kg CO2e/tonnes	63.09317	

Waste	Organic: mixed food and garden waste - Anaerobic digestion	Scope 3	3,231	tonnes	8.88386	kg CO2e/tonnes	28.70375	
Transport - car	Average car - Petrol	Scope 1	7,704	miles	0.26473	kg CO2e/miles	2.03948	
Transport - car	Average car - Hybrid	Scope 1	139,784	miles	0.20288	kg CO2e/miles	28.35938	
Transport - car	Average car - Diesel	Scope 1	63,740	miles	0.27334	kg CO2e/miles	17.42269	
Transport - car	Average fleet car - Battery Electric Vehicle	Scope 1	180,300	miles	0.00000	kg CO2e/miles	0.00000	
Transport - van/HGV	Fleet Van - Class II (1.305 to 1.74 tonnes) - Battery Electric Vehicle	Scope 1	78,600	miles	0.00000	kg CO2e/miles	0.00000	
Transport - van/HGV	Vans - Class I (up to 1.305 tonnes) - Diesel	Scope 1	50,412	miles	0.24716	kg CO2e/miles	12.45983	
Transport - van/HGV	HGV (all diesel) - All rigids - Average laden	Scope 1	345,333	km	0.82657	kg CO2e/km	285.44190	
Transport - van/HGV	Vans - Average (up to 3.5 tonnes) - Diesel	Scope 1	964,698	miles	0.40273	kg CO2e/miles	388.51283	
Transport - van/HGV	Vans - Class III (1.74 to 3.5 tonnes) - Diesel	Scope 1	414,218	miles	0.44042	kg CO2e/miles	182.42989	School minibuses
Transport - car	Average car - Diesel	Scope 3	192,920	miles	0.27334	kg CO2e/miles	52.73275	Business travel
Transport - car	Average car - Petrol	Scope 3	391,058	miles	0.26473	kg CO2e/miles	103.52478	Business travel
Transport - car	Average business travel car - Battery Electric Vehicle	Scope 3	17,929	miles	0.07636	kg CO2e/miles	1.36906	Business travel

Transport - car	Average car - Unknown	Scope 3	82,805	miles	0.26860	kg CO2e/miles	22.24142	Business travel
Electricity	Electricity: UK	Scope 2	1,131,677	kWh	0.20705	kg CO2e/kWh	234.31372	Vehicle chargers
Electricity	Transmission and distribution - Electricity: UK	Scope 3	1,131,677	kWh	0.01830	kg CO2e/kWh	20.70969	Vehicle chargers
Other	Other (please specify in comments)						3,835.756	Staff commuting estimate Data from CalCommuter survey which accounts for different transportation methods, work patterns, etc. Methodology updated to account for different working patterns for teaching staff. Sample size of 834 responses across 13 worksites upscaled to 5013 total staff

Other	Other (please specify in comments)	Scope 3					678.667	Homeworking estimate Data from CalCommuter survey which accounts for different transportation methods, work patterns, etc. Methodology updated to account for different working patterns for teaching staff. Sample size of 834 responses across 13 worksites upscaled to 5013 total staff
							14,998.491	

3c Generation, consumption and export of renewable energy

Provide a summary of the body's annual renewable generation (if any), and whether it is used or exported by the body.

Technology	Renewable Electricity		Renewable Heat		Comments
	Total consumed by the body (kWh)	Total exported (kWh)	Total consumed	Total exported (kWh)	

			by the body (kWh)		
Solar PV	213,267				

Targets

3d Organisational targets

List all of the body's targets of relevance to its climate change duties. Where applicable, targets for reducing indirect emissions of greenhouse gases, overall carbon targets and any separate land use, energy efficiency, waste, water, information and communication technology, transport, travel and heat targets should be included. Where applicable, you should also provide the body's target date for achieving zero direct emissions of greenhouse gases, or such other targets that demonstrate how the body is contributing to Scotland achieving its emissions reduction targets.

Name of target	Type of target	Target	Units	Boundary/scope of target	Year used as baseline	Baseline figure	Units of baseline	Target completion year	Progress against target	Comments
Net zero by 2045	Absolute	0 net kgCO ₂ e/yr	total % reduction	All emissions	2019/20	18,450	tCO ₂ e	2044/45		
Zero tailpipe emissions for vehicles <3 tonnes	Absolute	0 kgCO ₂ e/yr	total % reduction	Transport	2019/20		tCO ₂ e	2025/26		
Zero tailpipe emissions for vehicles >3 tonnes	Absolute	0 kgCO ₂ e/yr	total % reduction	Transport	2019/20		tCO ₂ e	2035/36		
Transformational corporate	Annual	1100 tCO ₂ e/yr	tCO ₂ e reduction	All emissions	2023/24	16,857	tonnes	2029/30	On track to	2024/25 interim target met

emissions carbon budgets									meet budget	
Continual corporate emissions carbon budget	Other (please specify in comments)	73,360 tCO2e / 5 yrs	tCO2e reduction	All emissions	2023/24	16,857	tonnes	2029/30	On track to meet budget	2024/25 interim target met
Business-as-usual corporate emissions carbon budget	Other (please specify in comments)	75,890 tCO2e / 5 yrs	tCO2e reduction	All emissions	2023/24	16,857	tonnes	2029/30	On track to meet budget	2024/25 interim target met

3da How will the body align its spending plans and use of resources to contribute to reducing emissions and delivering its emission reduction targets?

Provide any relevant supporting information **that is not already included elsewhere in this report.**

We link our grant funding awards to climate-positive outcomes and look to see community benefits related to climate change in our procurement policy. We have recently updated sustainability guidance for our procurement policy, which should guide our suppliers to improve their sustainability efforts in order to score well in our weighting. Sustainability has 5% weighting in capital projects and is included in the 'value' assessment of contracts. We have funds dedicated to Energy Transformation and a Board to oversee related projects.

3db How will the body publish, or otherwise make available, its progress towards achieving its emissions reduction targets?

Provide any other relevant supporting information. In the event that the body wishes to refer to information already published, provide information about where the publication can be accessed.

Simply referencing this report or its availability on the SSN website is insufficient information.

We submit a report of our emissions data to elected Councillors annually. The report provides an update on progress against the goals of East Lothian Council's Climate Change Strategy and Action Plan. The report also lists our total emissions in the prior financial year, broken down by source, and explains trends in emissions changes and changes to our reporting methodologies. The report is accessible by viewing meeting minutes of East Lothian Council committees and is published on the Council's Climate Change web page. See here:

https://www.eastlothian.gov.uk/download/meetings/id/25724/08_climate_change_strategy_update_and_summary

Our corporate emissions are one of our Top 50 Council Plan Performance Indicators available at:

https://www.eastlothian.gov.uk/download/meetings/id/26104/06_annual_and_top_50_council_plan_performance_indicators

Projects and changes

3e Estimated total annual carbon savings from all projects implemented by the body in the report year

If no projects were implemented against an emissions source, enter "0".

If the body does not have any information for an emissions source, enter "Unknown".

If the body does not include the emissions source in its carbon footprint, enter "N/A".

Emissions source	Total estimated annual carbon savings (tCO ₂ e)	Comments
Electricity		We have a programme of energy efficiency improvements & re-wiring and lighting upgrades, but do not routinely estimate emissions savings.
Natural gas		We replaced one fossil fuel heat system with a low emissions one in 2024/25, but did not estimate the emissions savings.
Other heating fuels		
Waste		We continue to make inroads on improving recycling rates and supporting waste reduction.
Water and sewerage		We closely monitor water usage across our estate and are implementing automatic monitoring at key sites.

Travel		We continue to progress new ways of working, but do not routinely estimate emissions savings.
Fleet transport		We continue to progress electrification and rationalisation of our fleet, but do not routinely estimate emissions savings.
Other (please specify in comments)		
Total	-	

3f Detail the top 10 carbon reduction projects to be carried out by the body in the report year

Provide details of the 10 projects which are estimated to achieve the highest carbon savings during report year.

Project name	Funding source	First full year of CO ₂ e savings	Are these savings figures estimated or actual?	Capital cost (£)	Operational cost (£/annum)	Project lifetime (years)	Primary fuel/emission source saved	Estimated carbon savings per year (tCO ₂ e/annum)	Estimated costs savings (£/annum)	Behaviour Change	Comments
LED lighting upgrades	Self-replenishing fund from reserves	Unknown	Estimated				Electricity: UK	Not routinely estimated		No	
Energy efficient street lighting	Reserves	Unknown	Estimated				Electricity: UK	Not routinely estimated		No	

Estate rationalisation	N/A	2023/24'	Estimated				Natural gas	Not routinely estimated		No	
Changing waste collection	N/A	2024/25'	Estimated				Aggregates - Landfill	Not routinely estimated		Yes	
ESSH2 compliance	Scottish Government	2019/20'	Estimated				Natural gas	Not routinely estimated		No	
Area-based Scheme	Scottish Government	2013/14'	Estimated				Natural gas	Not routinely estimated		No	
Fleet upgrades	Reserves	2022/23'	Estimated				Vans - Average (up to 3.5 tonnes) - Unknown	Not routinely estimated		No	
Shared travel options	Various	2024/25'	Estimated				Average car - Unknown	Not routinely estimated		Yes	
Nature restoration	Nature restoration fund	2024/25'	Estimated				Please select from drop down box	Not routinely estimated		No	
Tree planting	Various	2024/25'	Estimated				Please select from drop down box	Not routinely estimated		No	

LED lighting upgrades	Self-replenishing fund from reserves	Unknown	Estimated				Electricity: UK	Not routinely estimated		No
Energy efficient street lighting	Reserves	Unknown	Estimated				Electricity: UK	Not routinely estimated		No
Estate rationalisation	N/A	2023/24'	Estimated				Natural gas	Not routinely estimated		No
Changing waste collection	N/A	2024/25'	Estimated				Aggregates - Landfill	Not routinely estimated		Yes
EESH2 compliance	Scottish Government	2019/20'	Estimated				Natural gas	Not routinely estimated		No
Area-based Scheme	Scottish Government	2013/14'	Estimated				Natural gas	Not routinely estimated		No

3g Estimated decrease or increase in the body's emissions attributed to factors (not reported elsewhere in this form) in the report year

If the emissions increased or decreased due to any such factor in the report year, provide an estimate of the amount and direction

Emissions source	Total estimated annual emissions (tCO ₂ e)	Increase or decrease in emissions	Comments
------------------	---	-----------------------------------	----------

Estate changes		Increase	New schools & new build social housing due to growing population. Unknown impact.
Service provision		Decrease	Various efficiencies resulting in unknown change to emissions
Staff numbers		Increase	Small changes in staff numbers resulting in unknown change to emissions
Other (please specify in comments)		Please select from drop down box	
Total		-	

3h Anticipated annual carbon savings from all projects implemented by the body in the year ahead

If no projects are expected to be implemented against an emissions source, enter "0".

If the organisation does not have any information for an emissions source, enter "Unknown".

If the organisation does not include the emissions source in its carbon footprint, enter "N/A".

Emissions source	Total estimated annual carbon savings (tCO ₂ e)	Comments
Electricity		Programme of energy efficiency improvements & BMS continuing. Emissions savings not routinely estimated.
Natural gas		Emissions not routinely estimated.
Other heating fuels		Emissions not routinely estimated.
Waste		We will continue to facilitate improved recycling rates and support waste reduction.
Water and sewerage		We are rolling out enhanced water monitoring across our estate and will improve efficiencies more quickly.

Travel		We will continue to progress new ways of working, but do not routinely estimate emissions savings.
Fleet Transport		We will continue to progress electrification and rationalisation of our fleet, but do not routinely estimate emissions savings.
Other (please specify in comments)		
Total	-	

3i Estimated decrease or increase in emissions from other sources in the year ahead

If the body's corporate emissions are likely to increase or decrease for any other reason in the year ahead, provide an estimate of the amount and direction.

Emissions source	Total estimated annual emissions (tCO ₂ e)	Increase or decrease in emissions	Comments
Estate changes		Increase	Continued office & estate rationalisation - however this may result in more staff travel. New schools & new build social housing due to growing population.
Service provision		Decrease	Unknown
Staff numbers		Please select from drop down box	Unknown
Other (please specify in comments)		Please select from drop down box	
Total		-	

3j Total carbon reduction project savings since the start of the year which the body used as a baseline for its carbon footprint

If the body has data available, estimate the total emissions savings made from projects since the start of that year ("the baseline year").

Total savings	Total estimated emissions savings (tCO ₂ e)	Comments
Total project savings since baseline year		Greenhouse gas emission savings are not routinely estimated for projects. This is an area we are targeting for improvement in the coming years.

Further information

3k Supporting information and best practice

Provide any other relevant supporting information and any examples of best practice by the body in relation to corporate emissions, targets and projects.

PART 4: ADAPTATION

4a Has the body assessed current and future climate-related risks?

If yes, provide a reference or link to any such risk assessment(s).

As part of the Climate Ready South East Scotland partnership, we benefitted from the joint procurement of advanced coastal change and economic climate risk modelling. The coastal change study reveals that there will be significantly more assets at risk in East Lothian due to climate change by the middle of the century. The economic study estimates that East Lothian will experience a 4% reduction in GDP by the middle of the century on current trajectory, the highest in the region. See Climate Ready South East Scotland outputs here: <https://climatereadyses.org.uk/publications/>.

We also use freely available tools such as the Met Office's Local Authority Climate Service, which inform how we need to adapt to climate change as an organisation: <https://climatedataportal.metoffice.gov.uk/pages/lacs>

We have detailed modelling of climate risk in the town of Musselburgh through research done for the Musselburgh Flood Protection Scheme. Find here: <https://www.musselburghfloodprotection.com/wp-content/uploads/2024/03/Musselburgh-Coastal-Change-Assessment-2024-FINAL-Report.pdf>

Other than these shared resources or coastal change-specific research, we have not holistically assessed climate risk across the entire LA area. This is a priority for us in the years ahead.

4b What arrangements does the body have in place to manage climate-related risks?

Provide details of any climate change adaptation strategies, action plans and risk management procedures, and any climate change adaptation policies which apply across the body.

The East Lothian Council Climate Change Action Plan 2025-30 contains 66 actions which at least in part address adaptation. These actions cover a spectrum from protecting our built environment to instituting logistical procedures that better account for the effects of climate change. There are adaptation actions across all 4 themes of the Climate Change Strategy & Action Plan: Governance, Assets, Services, and Place. See the Action Plan here: https://www.eastlothian.gov.uk/downloads/file/34733/climate_change_strategy_2025-2030_action_plan

East Lothian Council publishes a Severe Weather Response Plan which is reviewed annually. This sets out the procedures to be followed in response to severe weather events, including actual flooding incidents and any predicted river or coastal flooding occurrences. Expenditure for responding to severe weather events is included in the Council budget.

The Council's Road Asset Management Plan 2018-2024 (one of four documents which support the Council's Local Transport Strategy 2018-2024) sets out the Council's plans for the management of the Council's road assets, including structures such as road bridges and culverts, to ensure they are maintained and improved, including preparing for the effects of severe weather events such as harsh winters or flooding.

Climate change is also addressed in the ELC Emergency Planning and Resilience meeting, which occurs bi-annually.

4c What action has the body taken to adapt to climate change?

Include details of work to increase awareness of the need to adapt to climate change and build the capacity of staff and stakeholders to assess risk and implement action. The body may wish to make reference to the Scottish Climate Change Adaptation Programme (“the Programme”).

In October 2025, we held a workshop with services across the Council to benchmark our performance against Adaptation Scotland's Capability Framework. In the discussion, participants were able to identify a number of ad hoc adaptation actions their service had undertaken, including natural drainage in amenity sites and instituting plans to defend vulnerable buildings ahead of extreme weather warning. However, because climate change is not explicitly named as a driver for most of these actions, there is not a strategic approach to these actions despite the existence of a Council Climate Change Strategy. We assessed East Lothian Council as having an 'Intermediate' Adaptation Capability.

The following measures are in place to deal with climate change adaptation:

- Flooding and drainage issues are considered when assessing and processing planning applications.
- The Severe Weather Response Plan has been developed and ensures a coordinated and consistent multi-agency response across the county.
- A Coastal Change Adaptation Plan (CCAP) is under development, which will assess a long-term approach to adapting East Lothian’s coastline to coastal and climate change.

We also continue to progress the Musselburgh Flood Protection Scheme. The proposed scheme was presented to Council in September 2025, where it was decided to ask Scottish Ministers to hold a public inquiry and make a final decision on the scheme.

4d Where applicable, what contribution has the body made to helping deliver the Programme?

Provide any other relevant supporting information

In October 2025, we held a workshop with services across the Council to benchmark our performance against Adaptation Scotland's Capability Framework (ACF). The ACF fully aligns with SNAP3 so progressing through the maturity stages of the ACF should result in progress delivering the Programme.

Our workshop assessment found that we had made at least some progress across all 4 maturity stages of all 4 capabilities. This resulted in reaching 'Intermediate' maturity in both the Understanding the Challenge and Strategy, Implementation and Monitoring capabilities. We were between 'Beginning' and 'Intermediate' for the Organisational Culture and Resources capability and between 'Intermediate' and 'Advanced' for the Working Together capability. This averaged to precisely an 'Intermediate' level across the entire Framework. East Lothian Council is therefore delivering on its obligations as a local authority under SNAP3 and is forming strong partnerships with key organisations regionally.

4e What arrangements does the body have in place to review current and future climate risks?

Provide details of arrangements to review current and future climate risks, for example, what timescales are in place to review the climate change risk assessments referred to in Question 4(a) and adaptation strategies, action plans, procedures and policies in Question 4(b).

Climate change is addressed in the ELC Emergency Planning and Resilience meeting, which occurs bi-annually. Our Severe Weather Response Plan is updated annually and reflects the latest understanding of climate impacts on our weather, and our Road Asset Management Plan are due to be refreshed in the coming 2 years.

We are part of a regional adaptation partnership called Climate Ready South East Scotland, which spent its first year modelling climate impacts to local authorities around the Firth of Forth, including East Lothian. The risk assessment was published in April 2025 and identified the following as the key risks for the region:

- 1) Risks to people, communities, and buildings from flooding
- 2) Risks to freshwater & terrestrial species from changing climatic conditions
- 3) Risks to infrastructure networks from flooding & from cascading failures
- 4) Risks to business sites from extreme weather, sea level rise, and flooding

The East Lothian Council Climate Change Strategy 2025-2030 includes actions to begin keeping and publishing a Climate Risk Register for the Council which will be regularly reviewed. Another action is to use the data from this Risk Register to develop an Adaptation Plan for East Lothian.

We are developing a Coastal Change Adaptation Plan, which will use the latest science to identify the areas with the greatest risk of coastal change and assess vulnerability.

4f What arrangements does the body have in place to monitor and evaluate the impact of the adaptation actions?

Please provide details of monitoring and evaluation criteria and adaptation indicators used to assess the effectiveness of actions detailed under Question 4(c) and Question 4(d).

We assess ourselves against Adaptation Scotland's Adaptation Capability Framework annually, which aligns with SNAP3. We have most recently done a workshop to self-assess in October 2025. This is our first assessment of the refreshed ACF.

Progress against the adaptation-related actions of the Climate Change Strategy 2025-30 are collected from services annually and reported to the Climate & Nature Emergency Group of officers and to Elected Members.

4g What are the body's top 5 climate change adaptation priorities for the year ahead?

Provide a summary of the areas and activities of focus for the year ahead.

1. Continue to progress and participate in the Climate Ready South East Scotland partnership, building business cases and a sustainable governance model for important regional actions
2. Complete the Coastal Change Adaptation Plan
3. Begin work on an Adaptation Investment Plan, utilising training from Adaptation Scotland
4. Communicate climate scenarios internally service-by-service to better assess for climate risk
5. Continue to progress the Musselburgh Flood Protection Scheme

4h Supporting information and best practice?

Provide any other relevant supporting information and any examples of best practice by the body in relation to adaptation.

East Lothian Council scored highly on the 'Working Together' capability of Adaptation Scotland's Adaptation Capability Framework. We participate in regional networks on nature restoration and coastal change and we are in a regional partnership with other local authorities called Climate Ready South East Scotland. In the report year, we also participated in the Task & Finish group which helped to develop the refreshed Adaptation Capability Framework.

PART 5: PROCUREMENT

5a How have procurement policies contributed to compliance with climate change duties?

Provide information relating to how the procurement policies of the body have contributed to its compliance with climate changes duties.

East Lothian Council Procurement Strategy (2023-2028) was approved by Cabinet in January 2023. The Strategy identifies five core focus areas, of which two are related to the Council's climate change duties; 'Contributing to the council's Net Zero Climate change targets' and 'Increasing Sustainability and Community Benefits'. The Strategy declares that the Procurement Service ""will support the transition to a low carbon economy"" and aims to ""provide excellent services that [...] respond to the climate emergency"". Key focuses include supporting a sustainable built environment, applying whole life costing for environmental and economic value, and proactively addressing climate goals through waste reduction, Net Zero commitments, and a circular economy approach.

The strategy includes a set of targets for 2024, many of which have since been achieved. For example, specific sustainability prioritisation tools have been developed for Construction, Social Care, ICT, Waste and Transport, and ELC is now using a range of identified procurement tools to support our sustainability targets. An e-learning module on the climate emergency has been developed, and a total of 41 ELC employees have completed this. In 2023, all procurement staff had completed Carbon Literacy Training.

The East Lothian Council Commodity Strategy from 2024 advises on how to consider sustainability, address environmental factors, and consider life-cycle costing\whole life costing as part of the procurement process. Officers are asked to consider energy consumption, resource intensiveness, vulnerability to climate change and carbon emissions from transport for High Value and Risk Tenders. For Low/Medium Value and Risk Tenders, officers are asked to consider minimising environmental damage and/or energy efficiency and detail how this will be achieved.

Lastly, the Council has a dedicated Sustainable Procurement Policy, which was approved by Cabinet in November 2020. The policy linked closely with the objectives of the Council's Climate Change Strategy 2020-25 and informed development of the ELC Climate Change Strategy 2025-30, aligns with the requirements of the Procurement Reform (Scotland) Act 2014, and draws on the Scottish Government's Sustainable Procurement Tool as well as flexible framework assessment tool. It has resulted in specific questions around sustainability as part of the tender process.

5b How has procurement activity contributed to compliance with climate change duties?

Provide information relating to how procurement activity by the body has contributed to its compliance with climate changes duties.

Procurement is conducted in accordance with all applicable rules and regulations, utilizing Scottish Government tools and applications. Procurement Officers are also making use of the specific sustainability prioritisation tools that have been developed for Construction, Social Care, ICT, Waste and Transport. Depending on the nature of the contract, sustainability is added at the specification and followed up with quality questions where applicable.

5c Supporting information and best practice

Provide any other relevant supporting information and any examples of best practice by the body in relation to procurement.

Sustainability is one of the categories of community benefits that suppliers can provide when securing a contract.

PART 6: VALIDATION AND DECLARATION

6a Internal validation process

Briefly describe the body's internal validation process, if any, of the data or information contained within this report.

The data in this report are validated by the Climate and Nature Emergency Group (see: Governance). The Group has a standing item to meet in November in order to discuss the data contained in the PBCCDR report. Group members, including officers who hold the raw data, will be sent a copy of the report in advance of the meeting. They will then have an opportunity to amend or comment on the data. Once all concerns and comments are addressed, the Sustainability & Climate Change Officer will consider the report validated and will submit the report.

6b Peer validation process

Briefly describe the body's peer validation process, if any, of the data or information contained within this report.

6c External validation process

Briefly describe the body's external validation process, if any, of the data or information contained within this report.

6d No validation process

If any information provided in this report has not been validated, identify the information in question and explain why it has not been validated.

6e Declaration

I Confirm that the information in this report is accurate and provides a fair representation of the body's performance in relation to climate change.

Name:	Keith Dingwall
Role in the body:	Head of Development

Date:

24/11/2025