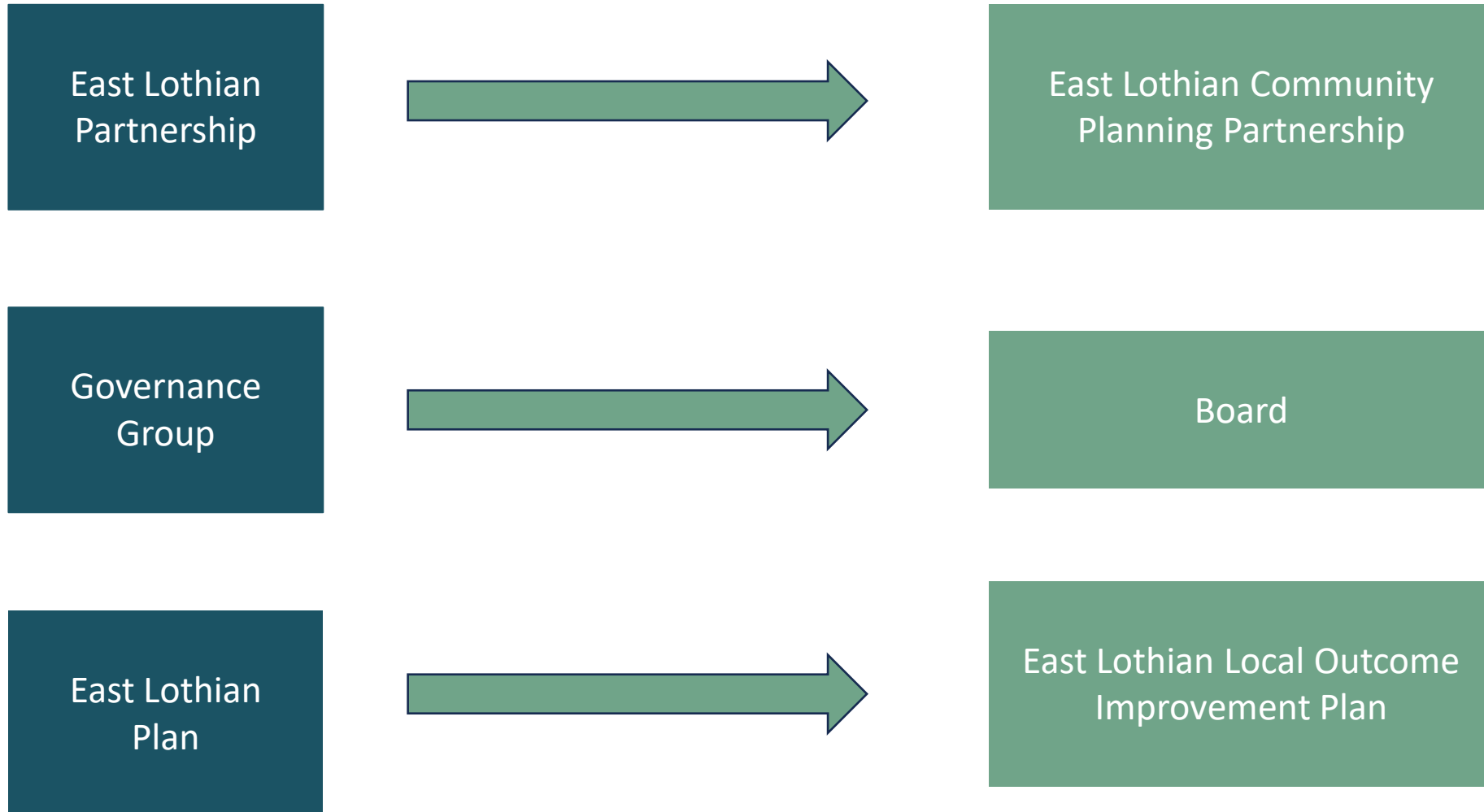




Local Outcome Improvement Plan 2026-36

Adoption of new language



Early Intervention, Prevention and Inequity

East Lothian Community Planning Partnerships focus is embedded in prevention, early intervention and reducing inequalities (inequity).

The East Lothian CPP will work to the following definitions of Prevention, Early Intervention and Inequity.

Prevention

Invest to stop problems happening in the first place.

Early intervention

Focusing on early detection of a problem to support early intervention and support or reducing the level of harm

Inequity

Identify where inequities exist, understand what drives them, and take targeted action to reduce them.

Engagement and Co-Production

- More than 25,000 people have helped to shape the themes and actions within the plan.
- This includes nearly **10,000** children, young people and families.
- Over **60** partners have supported this effort, with **140** reports, engagement and research shaping the priorities.



Engagement and Co-Production

3 Key Themes emerged from engagement: health and mental health, feeling safe at home in our community, and tackling poverty and inequality.

Climate change, transport, participation, were important to communities



Living Well



Keeping Safe



Money Matters

Themes and Priority Areas

Living Well: • Wellbeing • Staying Connected • Healthy and Active Places and Spaces.

Keeping Safe: • Online and Phone Safety • Safer Communities
• Gender Based Violence and Abuse • Substance Use
• Climate Resilience and Adaptation.

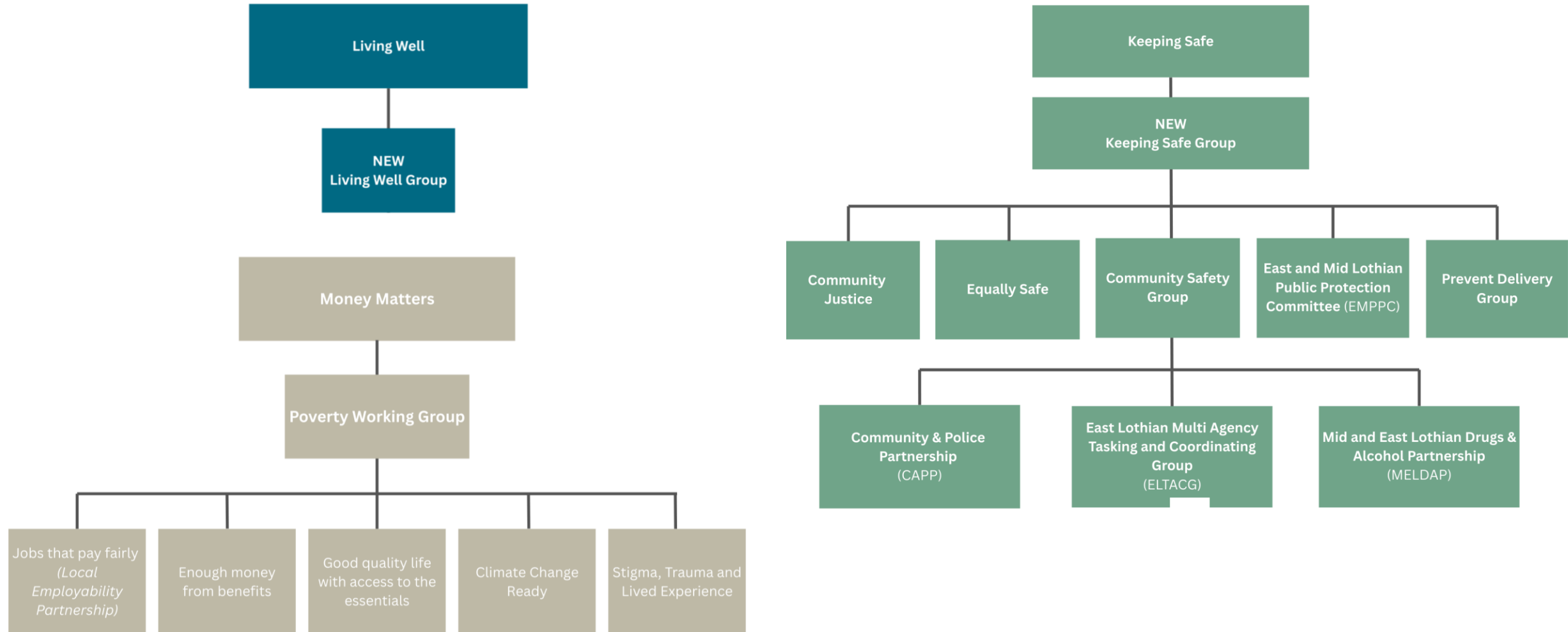
Money Matters: • Good Quality Jobs that Pay Fairly • Enough Money from Benefits • A good life with access to the Essentials
• Climate Change Ready • Stigma-aware and trauma informed with lived experience.

New Governance Structure



CPP Members:	
Area Partnerships	Police Scotland
Association of East Lothian Community Councils	Queen Margaret University
East Lothian Council	Scottish Fire and Rescue Service
East Lothian Tenants and Residents Panel	Skills Development Scotland
Edinburgh College	Scottish Enterprise
Health and Social Care Partnership	Transport Scotland
NHS Lothian	Volunteer Centre East Lothian

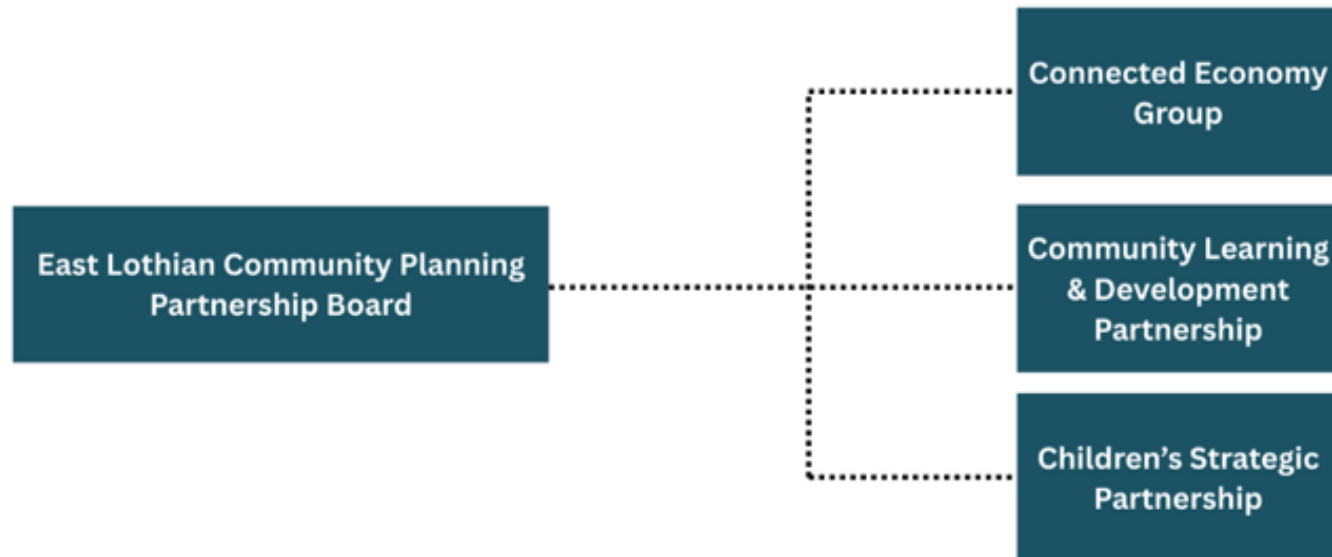
Sub-groups – Living Well, Keeping Safe and Money Matters



Reporting structure

Reporting function

The East Lothian Community Planning Partnership has reporting and oversight function for the following groups:



Improvement plan (Short life working group)

- A review of how ***Elected Members and community representatives*** engage with the leadership of the partnership.
- Improving awareness and transparency of community planning and its ***governance and accountability***.
- Strengthening the monitoring and reporting to show the ***impact the partnership was making***.
- Developing the CPP's approaches to ***community engagement*** to ensure the views of the wider community influence the work of the partnership.

Next Steps and Timelines

- Strategic groups to develop logic frameworks including baseline and measurement data from March – September 2026.
- Officers group to work with data colleagues to develop a dashboard between March 2026 and April 2027.
- Officers to produce an annual report on the work of the East Lothian Community Planning Partnership in September 2027.

Strong links with CSP, Youth Vision, LDP2, Open Space, Physical Activity and Sport Strategy etc

- Youth Vision reflects the key priority of Safety
- CSP plan being developed has four themes; three from LOIP and Belonging to East Lothian
- Three thematic specific plans Open Space and Physical Activity and Sport Strategy and LDP 2
- East Lothian Partnership Community Engagement and Participation Strategy August 2026